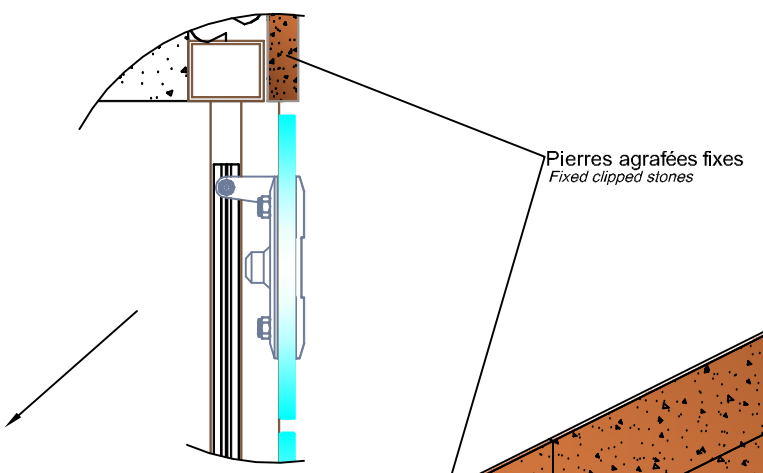
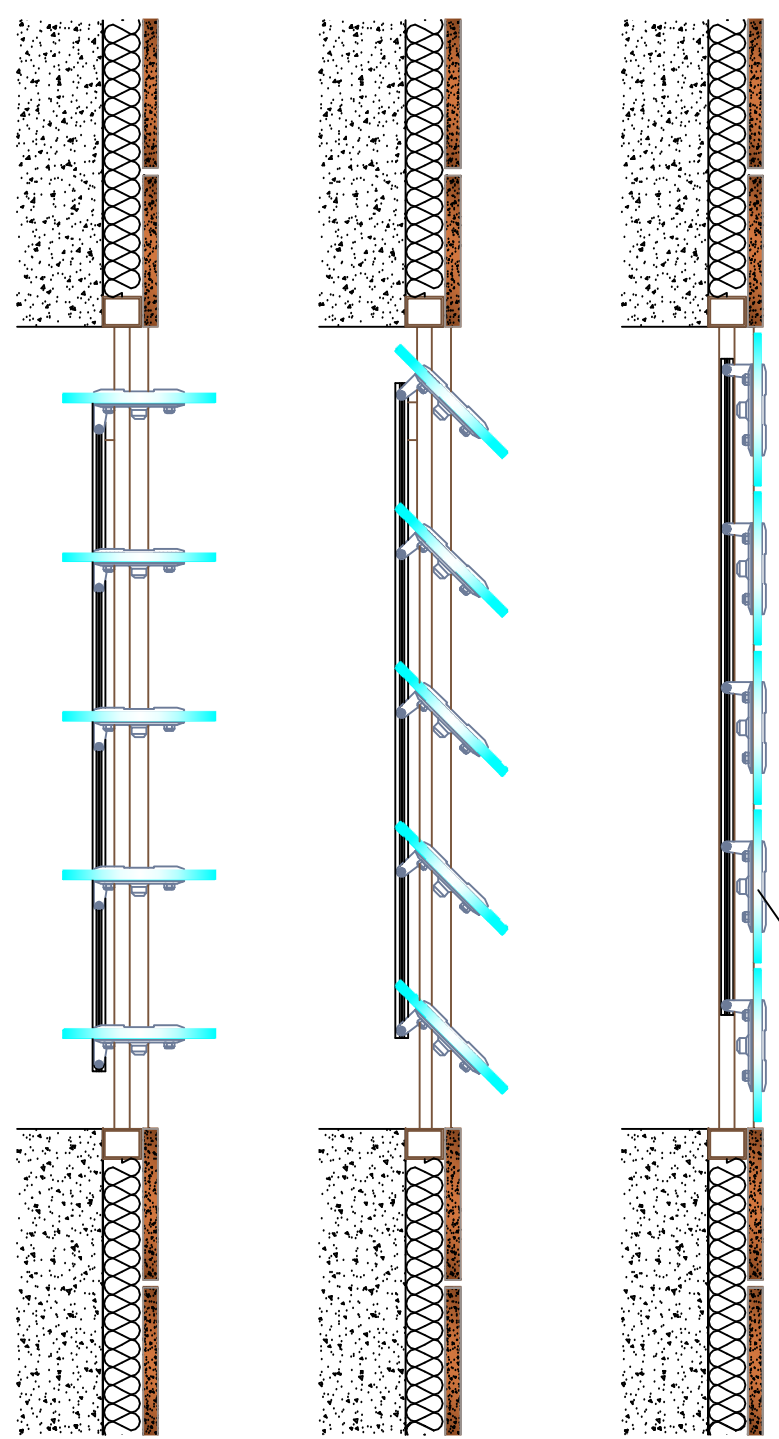
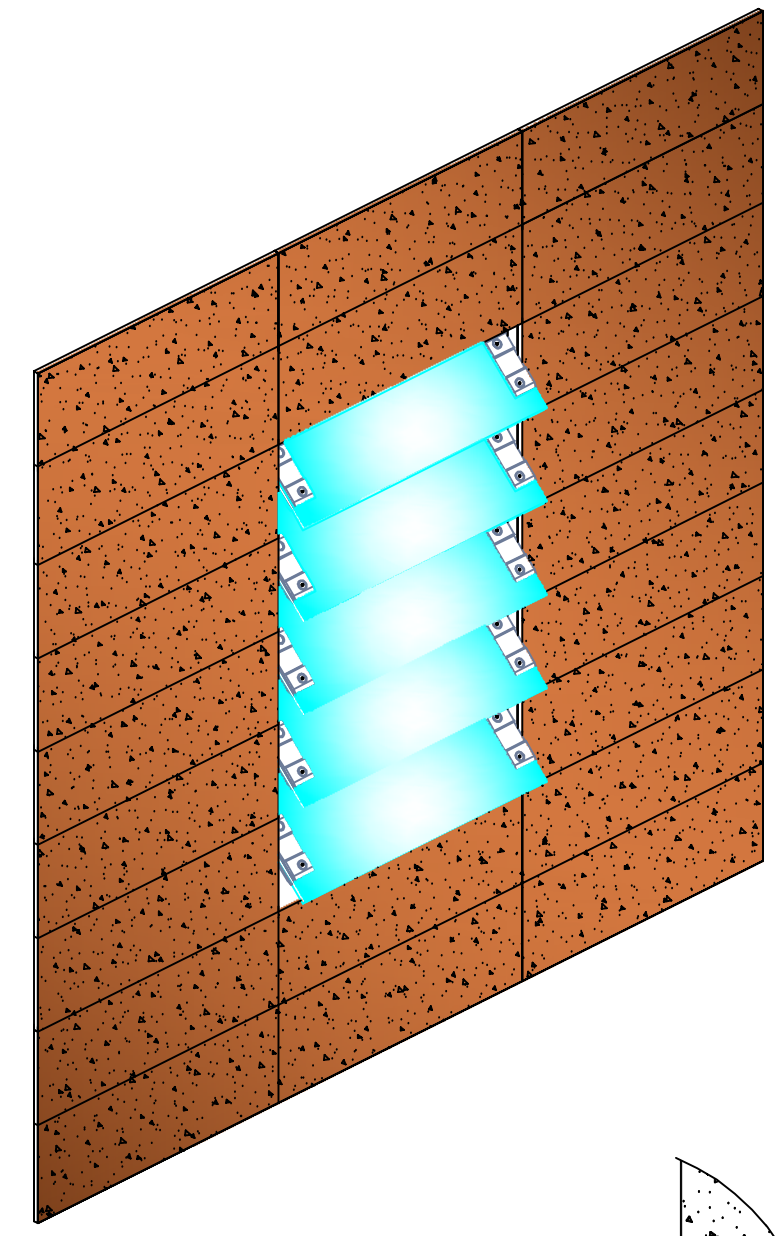
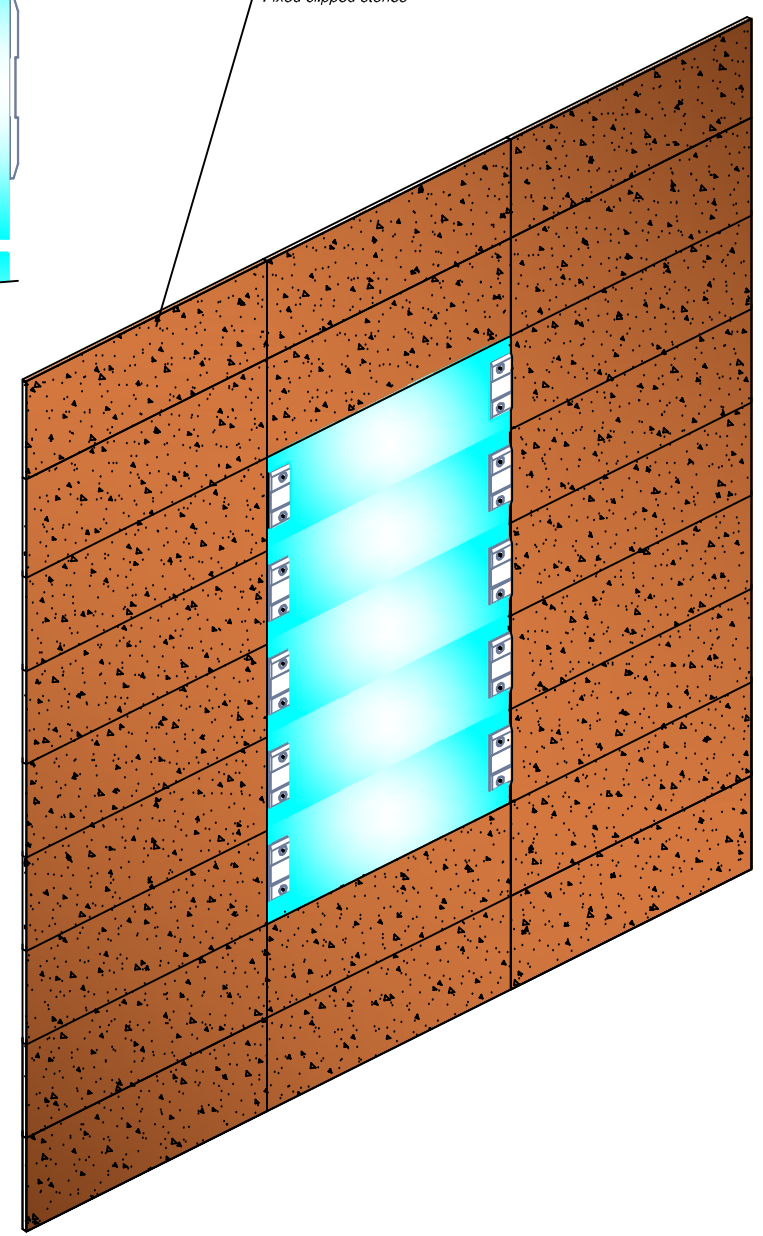


EXEMPLE LAMES AFFLEURANTES PIERRE OU VERRE / LEVELLING BLADES (STONE / GLASS)

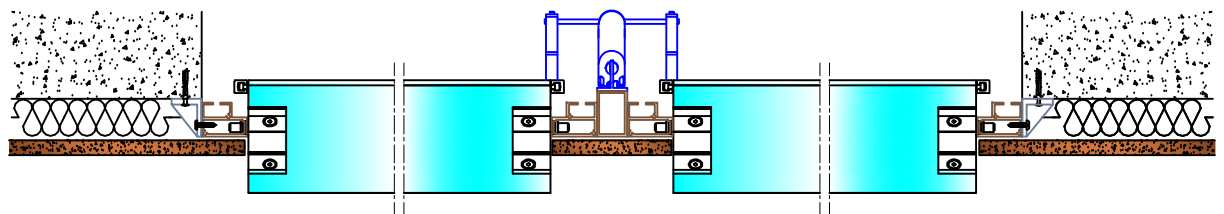
VERSION CLAIRE-VOIE
OPEN VERSION



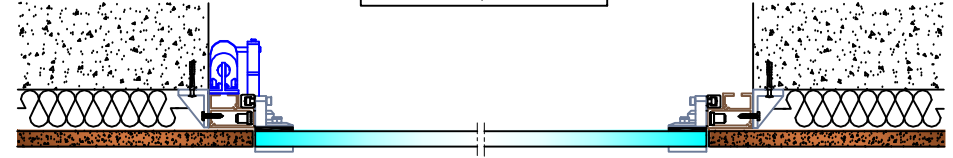
lame verre
Glass blade



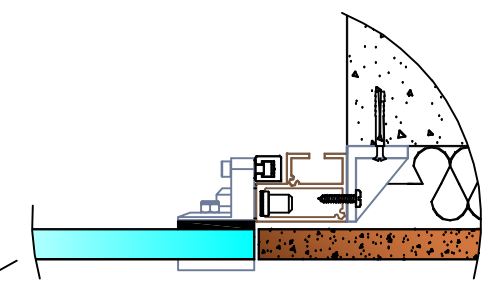
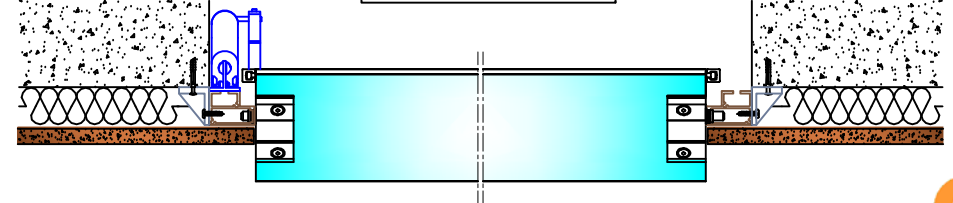
Module double
Double Modules



Module simple fermé
Closed Single Module



Module simple ouvert
Opened Single Module



Système affleurant Levelling blades (Glass / Stone)			COMMERCIAL / USINE Tél.: +33(0)2 37 90 46 46 Fax: +33(0)2 37 90 20 10
Verre / Pierre PRINCIPE / PRINCIPLE			Mail: info@sab-inter.com Site: www.sab-inter.com
Réf.: Affleu-verre-1 Echelle: -	Date: 01/09/08 Dessin: BX	6	



Lames affleurantes *verre*

BRISE SOLEIL

- Nom Commercial Lames affleurantes verre
- Type de montage
 - Horizontal
 - Vertical
- Type de pose
 - Orientable
 - Fixe
- Type de lame
 - Verre
 - Compact
 - Pierre
- Support de lame

BS4011, support en aluminium laqué, avec axe inox Ø 12mm et fourreaux inox insérés au moulage du support avec couvercle BS4013, pour lame de 150 à 300mm
- Montant

Profils en aluminium extrudé spécifiques
- Jonction

Les flasques des lames sont reliées à la tringle aluminium par le système **TJBS**
- Mécanismes

Poignée de serrage
Vérin télescopique
Moteur électrique 24 Volts, 1000N
- Aluminium

6060 T5
- Finition

Thermo laquage
Anodisé 20 microns



Levelling blades *glass*

SOLAR SHADING

- Commercial name Glass levelling blades
- Type of installation
 - Horizontal
 - Vertical
- Type of setting
 - Mobile
 - Fixed
- Type of blade
 - Glass
 - HPL Laminate
 - Stone
- Blades support

BS4011, support, in lacquered aluminium, with stainless steel Ø 12mm axis and S/S sleeves insert at the moulding of the support with an aluminium cover BS 4013 for 150 to 300mm blades
- Post

Specific extruded aluminium profiles
- Junction

The flanges of the blades are linked to the aluminium rod by the **TJBS** system
- Mechanisms

Tightening handle
Telescopic jack screw
Electrical motor 24 Volts, 1000N
- Aluminium

6060 T5
- Finishing

Thermo lacquering
20 microns anodised