

HOOK SYSTEM



Fixing for glass facade 2.2



Fixing system for glass roof or canopy 2.4

Fixing for glass facade



Description





- **Point Supported “Hook” system for facade.**
- 316 stainless steel single or double attachment.
- Alternative to traditional spider + rotule.
- Simple design.
- The hook system allows for rotation around the pin axis and horizontal movement.
- Available in both countersunk or cylindrical through hole glass drilling.
- It installs on a standard glass thickness between 10 (3/8 in) and 26 mm (1 in) (other thickness on request).
- Glass attachment body is attached to the glass and the panels **hook onto the pin**.

Performances

		BENDING CAPACITY			PULL OUT CAPACITY
AXIS	D	F 1 MM (SLS)	F 2 MM	RP0,1 (ULS)	ULS
	Ø 17	1028 daN (2311 lb)	1930 daN (4338 lb)	1273 daN (2861 lb)	3399 daN (7641 lb)*

* Tensile strength calculation according to EN 1993-1-8.

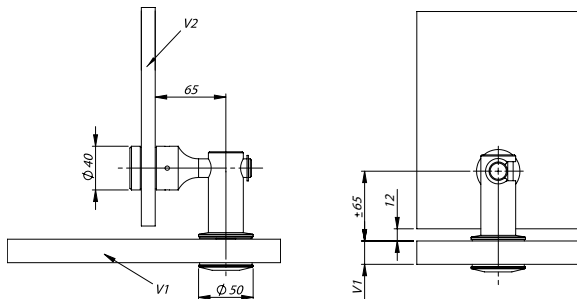
References

PHOTO	REFERENCE *	DESCRIPTION	GLASS DRILLING
	VP2031F	Simple fixing	Cylindrical
	VP2032F	Double fixing	Cylindrical
	VP2061F	Simple fixing	Countersunk
	VP2062F	Double fixing	Countersunk

*Please specify the glass thickness of facade and bracing.

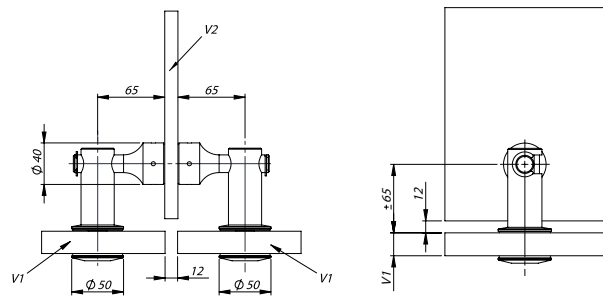
Dimensions

SIMPLE FIXING



Details simple VP2031F

DOUBLE FIXING

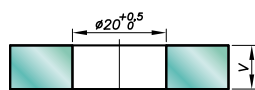


Details double VP2032F

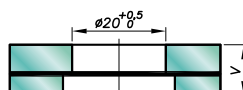
Drilling

FOR THE FACADE

CYLINDRICAL SCREW

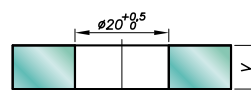


Monolithic glass

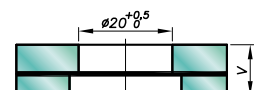


Laminated glass

FOR BRACING

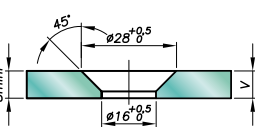


Monolithic glass

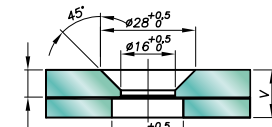


Laminated glass

COUNTERSUNK SCREW



Monolithic glass



Laminated glass

Fixing system for **glazing roof or canopy**



Description

- **Fixing system** for glass roof or canopy.
- 316 stainless steel single or double attachment.
- Alternative to traditional spider + rotule.
- Simple design.
- The canopy system allows for rotation around the pin axis and horizontal movement.
- The canopy system is available with countersunk screws or cylindrical.
- It installs on a standard glass thickness between 10 (3/8 in) and 26 mm (1 in) (other thickness on request).
- Glass attachment body is attached to the pin and the glass panels **are installed on the fitting (connections do not "Hook")**





Performances

		BENDING CAPACITY			PULL OUT CAPACITY
		F 1 MM (SLS)	F 2 MM	RP0,1 (ULS)	ULS
AXIS	D				
	Ø 17	1028 daN (2311 lb)	1930 daN (4338 lb)	1273 daN (2861 lb)	3399 daN (7641 lb)*

* Tensile strength calculation according to EN 1993-1-8.

Fixing system for **glazing roof or canopy**

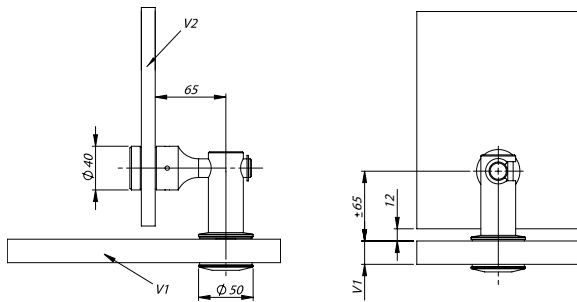
References

PHOTO	REFERENCE *	DESCRIPTION	GLASS DRILLING
	VP2031C	Simple fixing	Cylindrical
	VP2032C	Double fixing	Cylindrical
	VP2061C	Simple fixing	Countersunk
	VP2062C	Double fixing	Countersunk

*Please specify the glass thickness of facade and bracing.

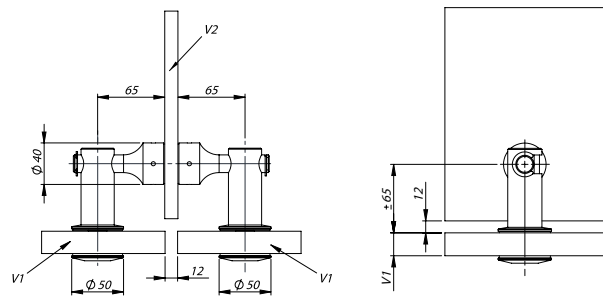
Dimensions

SIMPLE FIXING



Details simple VP2031C

DOUBLE FIXING

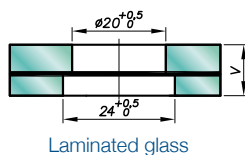
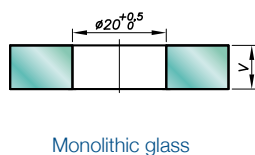


Details double VP2032C

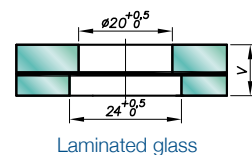
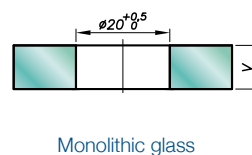
Drilling

FOR GLAZING ROOF OR CANOPY

CYLINDRICAL SCREW



FOR BRACING



COUNTERSUNK SCREW

