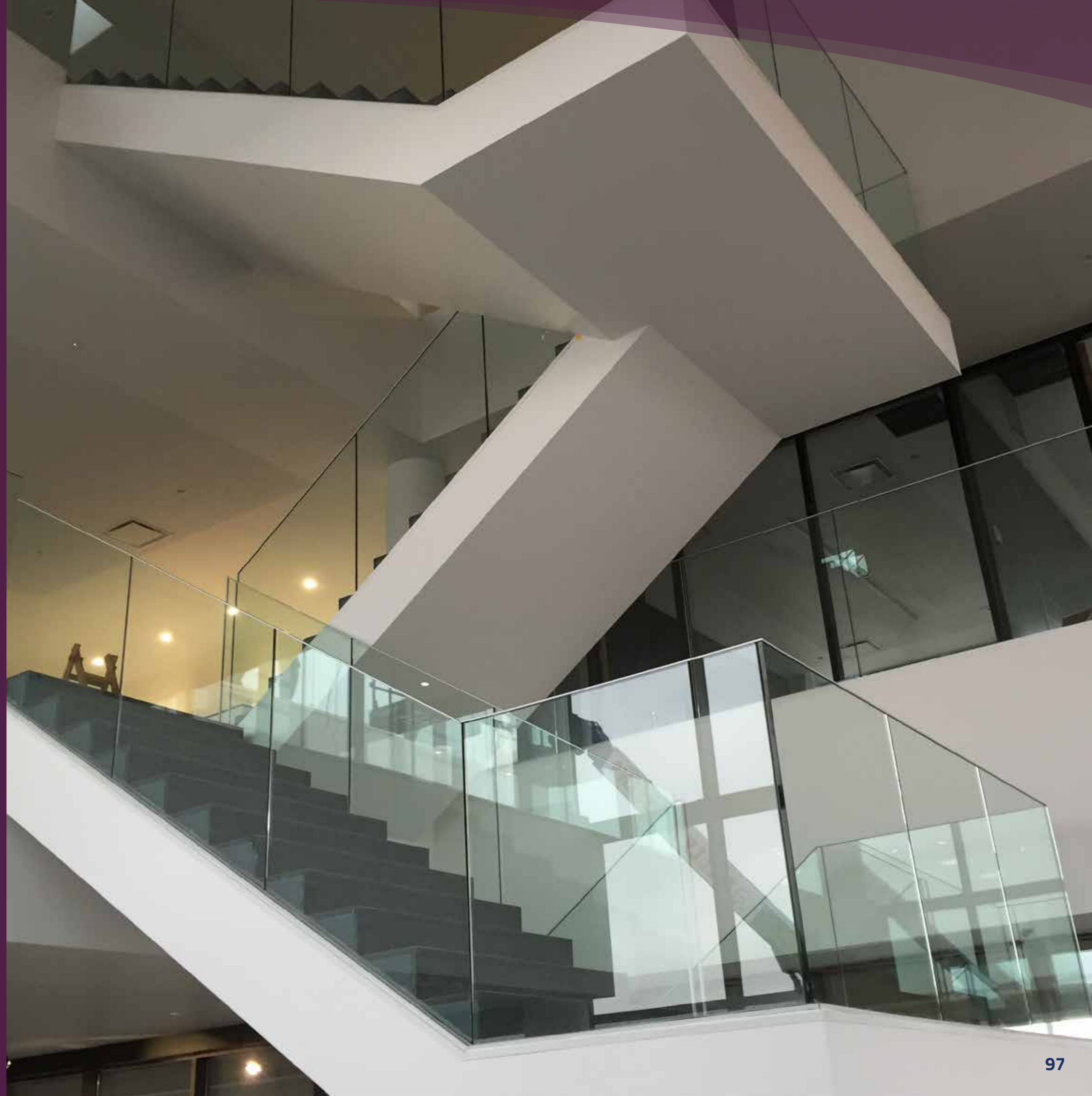


PART 2
SABCO Products

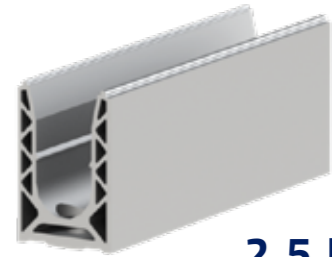
TECHNICALS
DRAWING
AND ACCESSORIES



RAILS TECHNICAL DRAWINGS

SABCO ORIGINAL

FLOOR MOUNTING



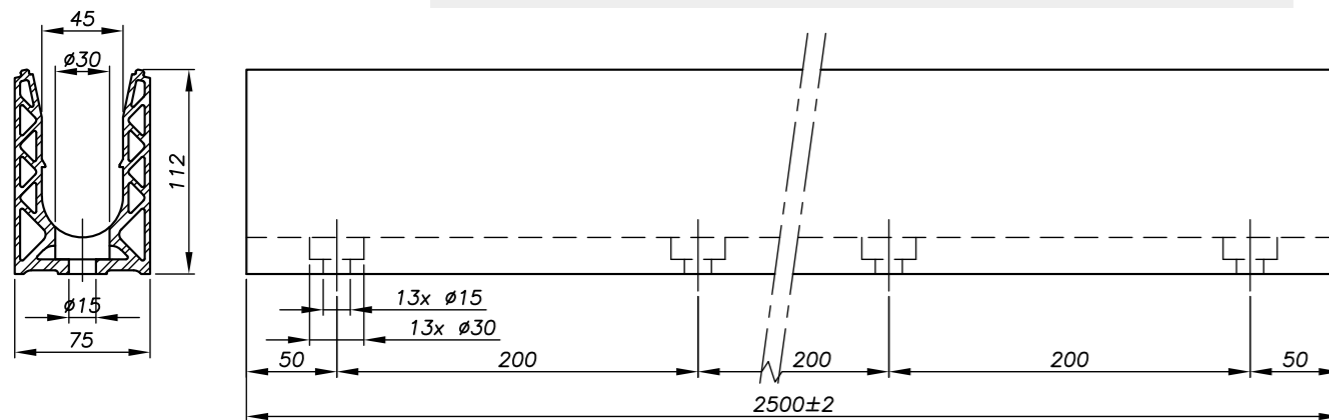
2.5 M

SABCO ORIGINAL - RAIL FLOOR MOUNTING

0070RAIL10

ANODIZED ALUMINUM
Code : 01

The complete reference code will be composed of:
Rail code 0070RAIL 10 plus the finish code e.g. 0070RAIL 10 **01** for Anodized Aluminum



SABCO ORIGINAL

LATERAL MOUNTING



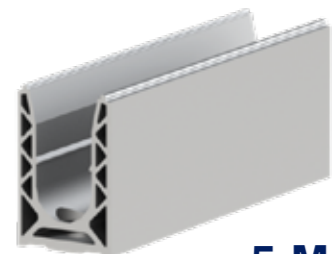
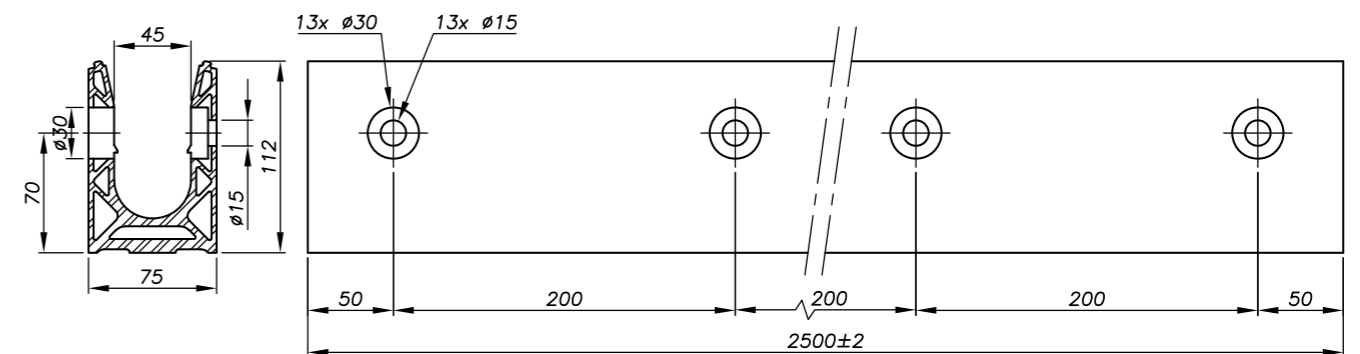
2.5 M

SABCO ORIGINAL - RAIL LATERAL MOUNTING

0070RAIL11

ANODIZED ALUMINUM
Code : 01

The complete reference code will be composed of:
Rail code 0070RAIL 11 plus the finish code e.g. 0070RAIL 11 **01** for Anodized Aluminum



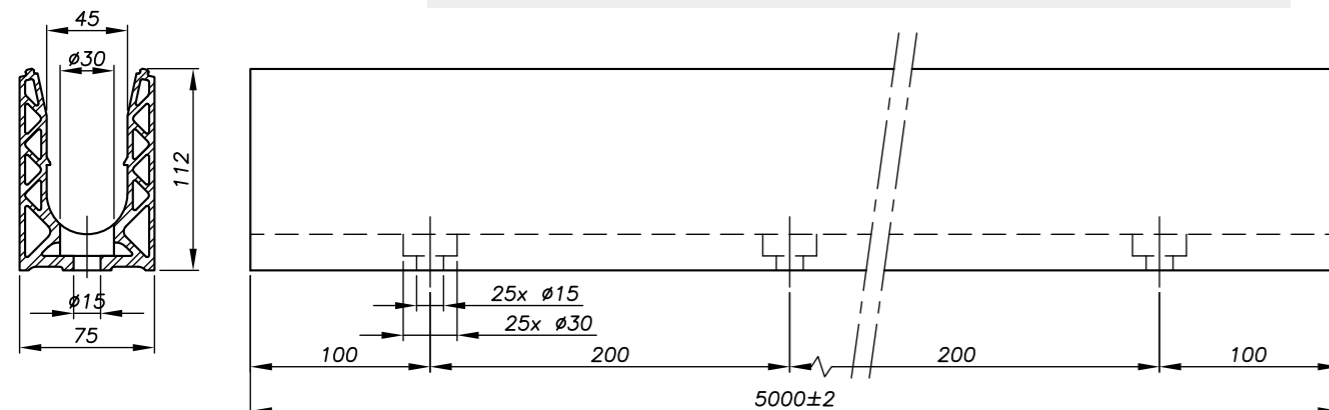
5 M

SABCO ORIGINAL - RAIL FLOOR MOUNTING

0070RAIL20

ANODIZED ALUMINUM
Code : 01

The complete reference code will be composed of:
Rail code 0070RAIL20 plus the finish code e.g. 0070RAIL 20 **01** for Anodized Aluminum



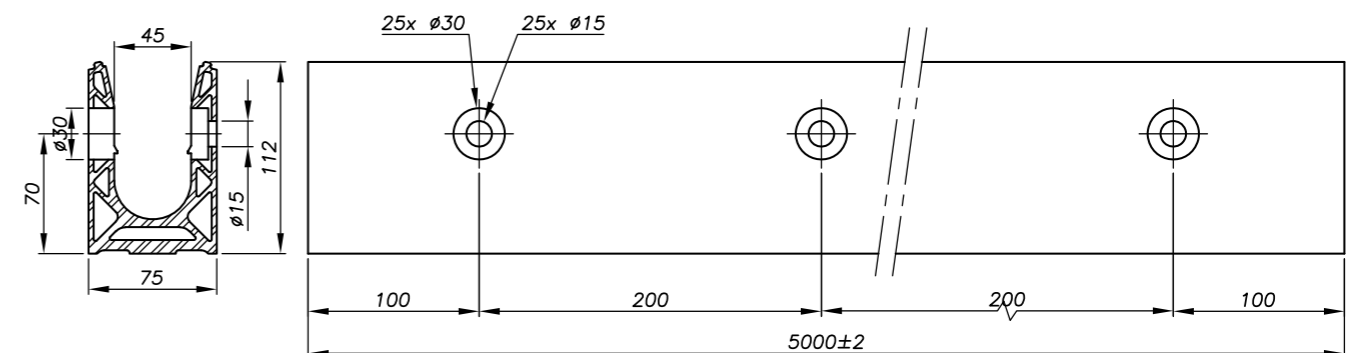
5 M

SABCO ORIGINAL - RAIL LATERAL MOUNTING

0070RAIL21

ANODIZED ALUMINUM
Code : 01

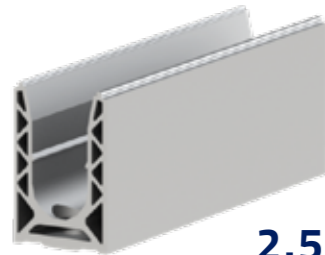
The complete reference code will be composed of:
Rail code 0070RAIL21 plus the finish code e.g. 0070RAIL 21 **01** for Anodized Aluminum



RAILS TECHNICAL DRAWINGS

SABCO ORIGINAL

BUILT IN SLAB MOUNTING



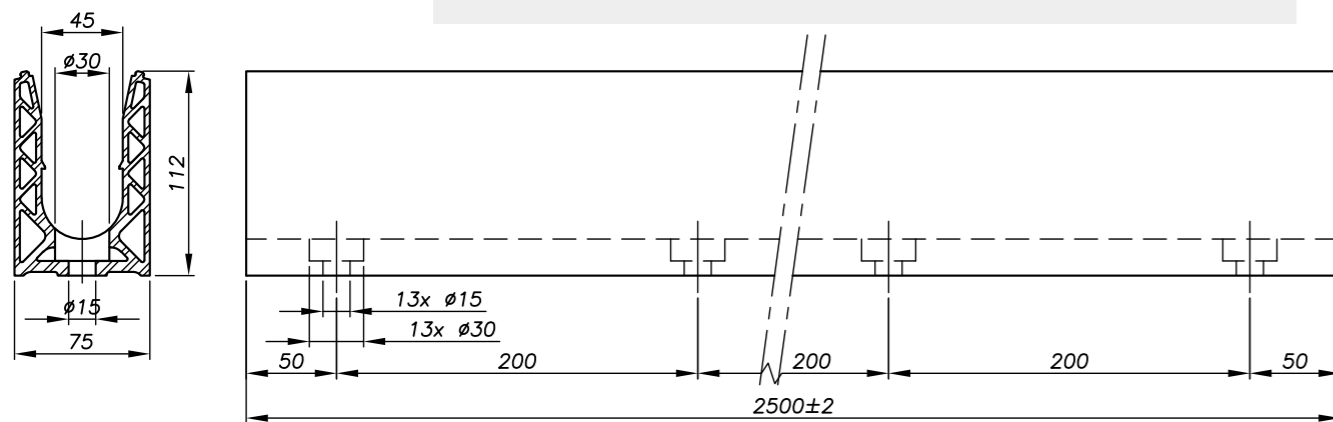
2.5 M

SABCO ORIGINAL - RAIL BUILT IN SLAB MOUNTING

0070RAIL10

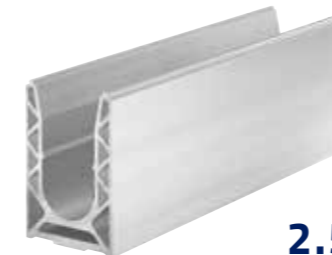
ANODIZED ALUMINUM
Code : 01

The complete reference code will be composed of:
Rail code 0070RAIL plus the finish code e.g. 0070RAIL 10 **01** for Anodized Aluminum



SABCO ORIGINAL

NOT DRILLED



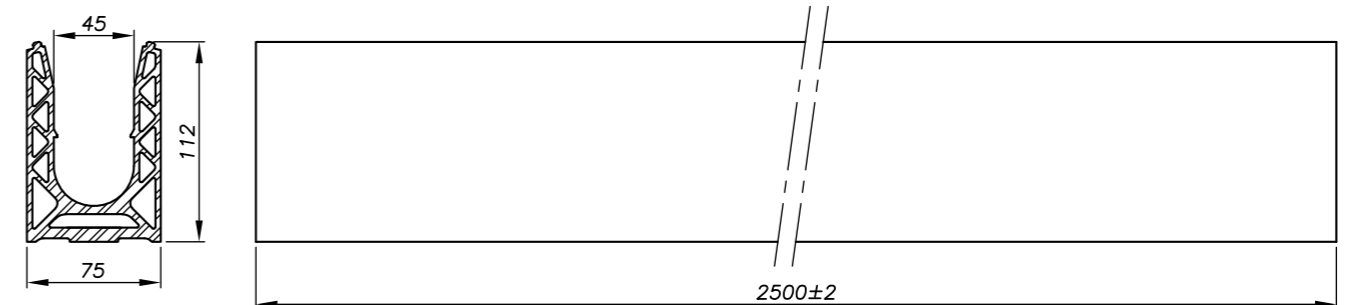
2.5 M

SABCO ORIGINAL - RAIL NOT DRILLED

0070RAIL201

ANODIZED ALUMINUM
Code : 01

The complete reference code will be composed of:
Rail code 0070RAIL201 plus the finish code e.g. 0070RAIL201 **01** for Anodized Aluminum



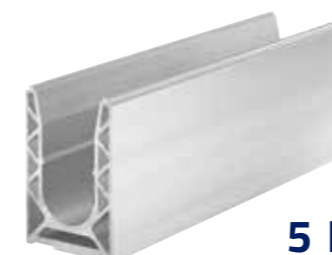
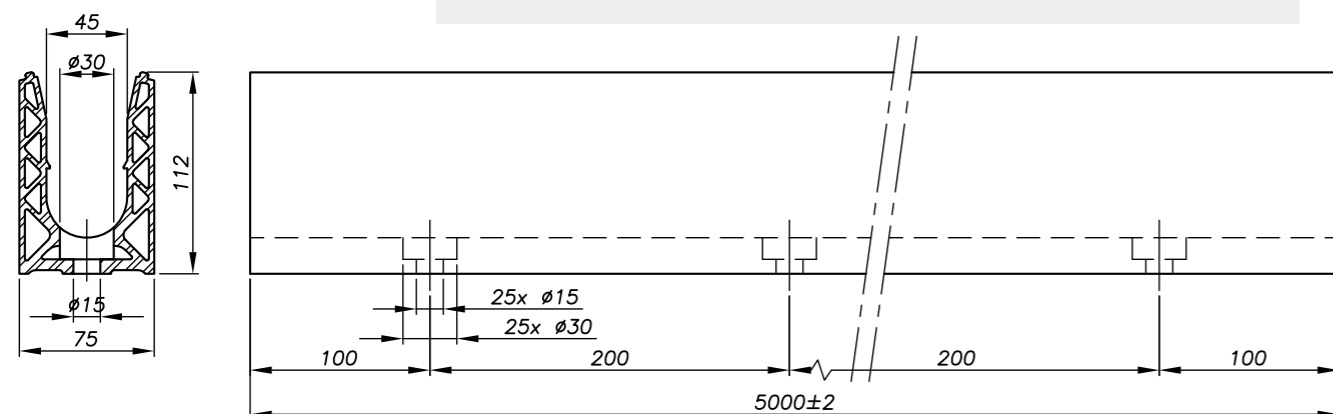
5 M

SABCO ORIGINAL - RAIL BUILT IN SLAB MOUNTING

0070RAIL20

ANODIZED ALUMINUM
Code : 01

The complete reference code will be composed of:
Rail code 0070RAIL20 plus the finish code e.g. 0070RAIL20 **01** for Anodized Aluminum



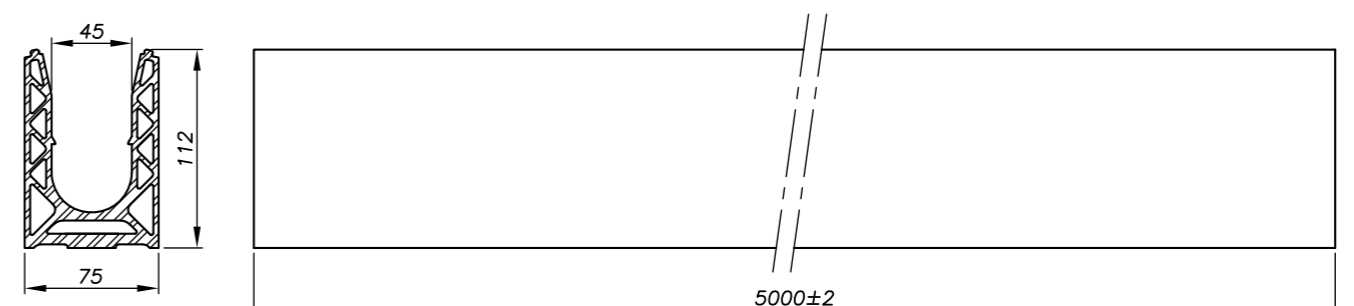
5 M

SABCO ORIGINAL - RAIL NOT DRILLED

0070RAIL501

ANODIZED ALUMINUM
Code : 01

The complete reference code will be composed of:
Rail code 0070RAIL501 plus the finish code e.g. 0070RAIL501 **01** for Anodized Aluminum



RAILS TECHNICAL DRAWINGS

SABCO ORIGINAL

OFFSET FIXING

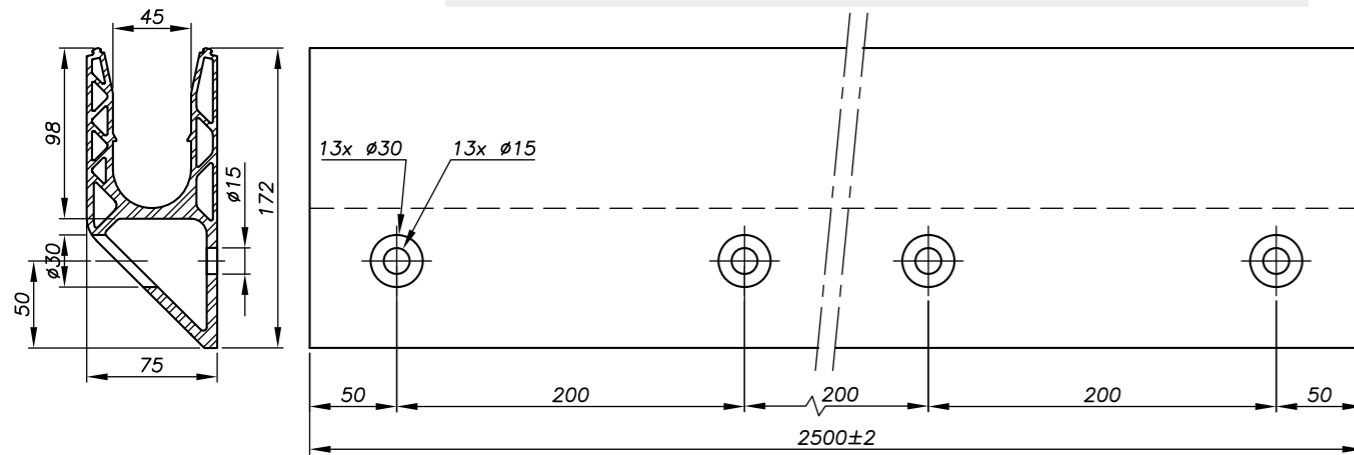


2.5 M

SABCO ORIGINAL - RAIL OFFSET FIXING 0070RAIL13

ANODIZED
ALUMINUM
Code : 01

The complete reference code will be composed of:
Rail code 0070RAIL13 plus the finish code e.g. 0070RAIL13 **01** for Anodized Aluminum

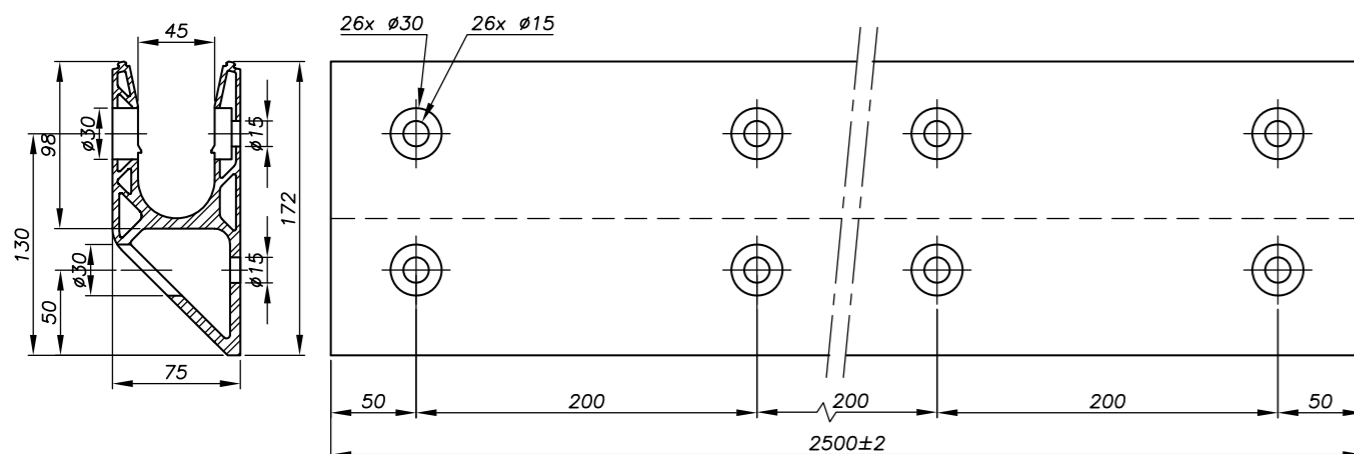


2.5 M

SABCO ORIGINAL - RAIL OFFSET DOUBLE FIXING 0070RAIL13D

ANODIZED
ALUMINUM
Code : 01

The complete reference code will be composed of:
Rail code 0070RAIL13D plus the finish code e.g. 0070RAIL13D **01** for Anodized Aluminum



SABCO ORIGINAL

OFFSET FIXING

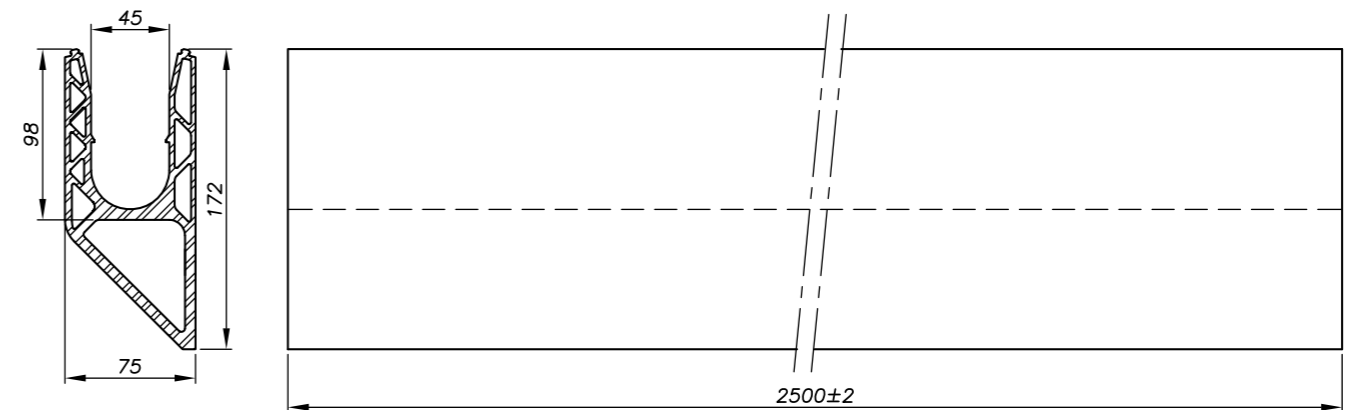


2.5 M

SABCO ORIGINAL - RAIL OFFSET NOT DRILLED FIXING 0070RAIL203

ANODIZED
ALUMINUM
Code : 01

The complete reference code will be composed of:
Rail code 0070RAIL203 plus the finish code e.g. 0070RAIL203 **01** for Anodized Aluminum



RAILS TECHNICAL DRAWINGS

SABCO EVO

FLOOR MOUNTING



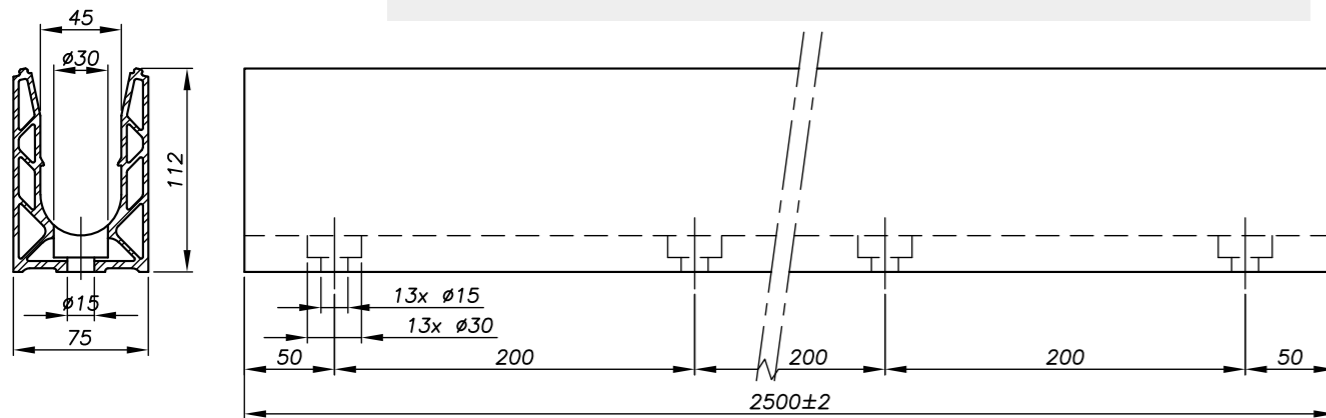
2.5 M

SABCO EVO - RAIL FLOOR MOUNTING
0070RAIL30

NOT DRILLED RAIL
0070RAIL204



The complete reference code will be composed of:
Rail code 0070RAIL30 plus the finish code e.g. 0070RAIL30 **01** for Anodized Aluminum



SABCO EVO

BUILT IN SLAB MOUNTING

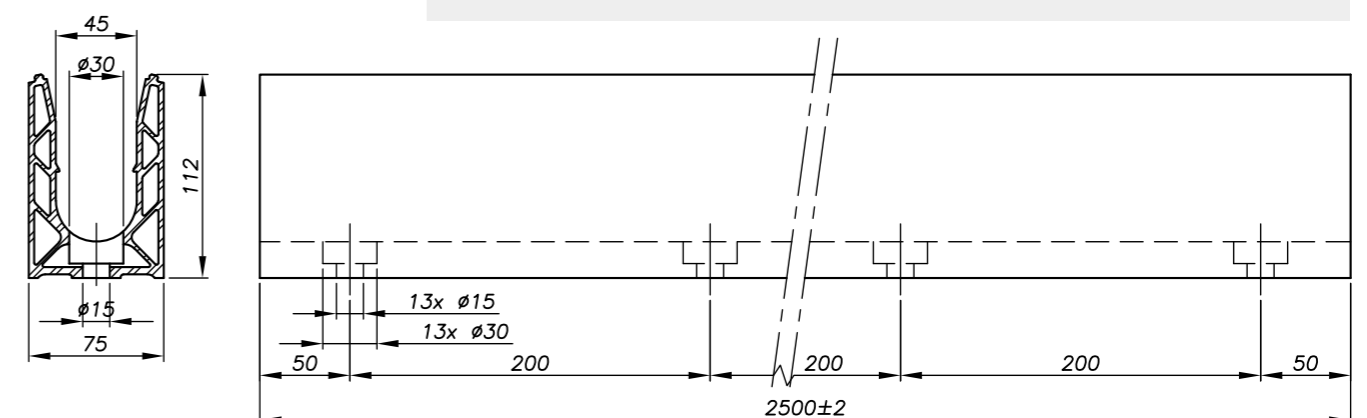


2.5 M

SABCO EVO - RAIL BUILT IN SLAB MOUNTING
0070RAIL30



The complete reference code will be composed of:
Rail code 0070RAIL30 plus the finish code e.g. 0070RAIL30 **01** for Anodized Aluminum



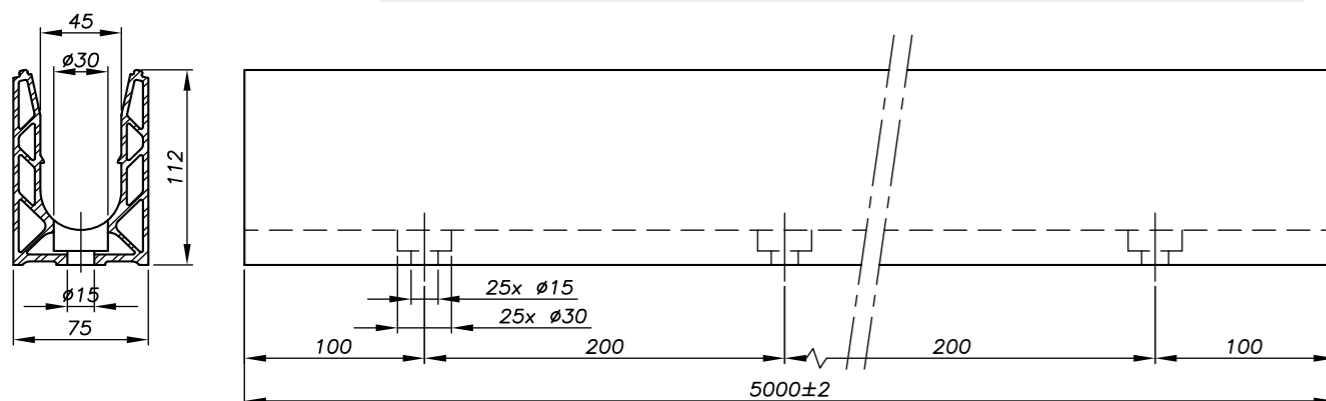
5 M

SABCO EVO - RAIL FLOOR MOUNTING
0070RAIL40

NOT DRILLED RAIL
0070RAIL504

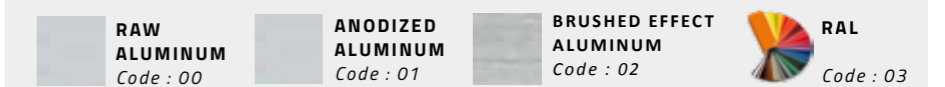


The complete reference code will be composed of:
Rail code 0070RAIL40 plus the finish code e.g. 0070RAIL40 **01** for Anodized Aluminum

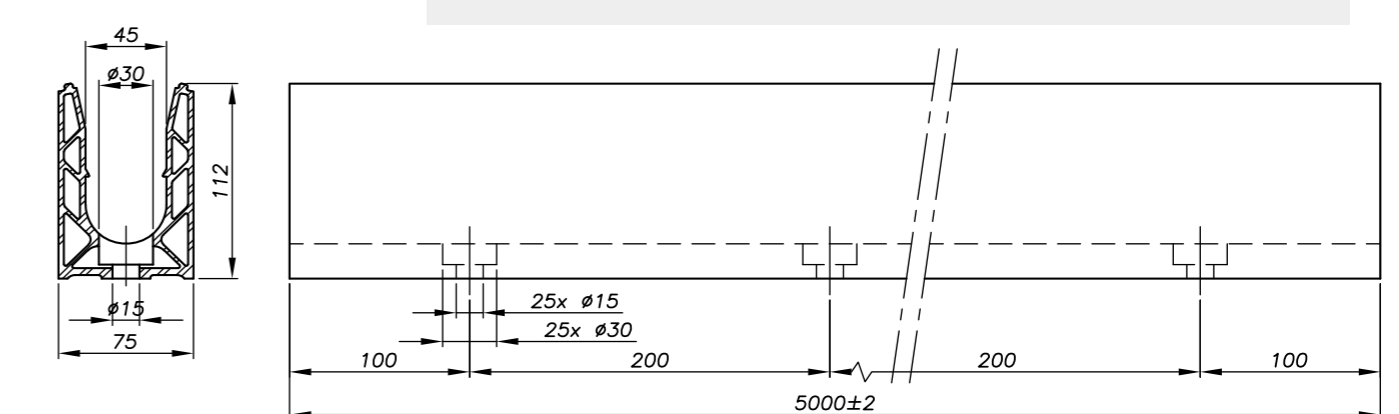


5 M

SABCO EVO - RAIL BUILT IN SLAB MOUNTING
0070RAIL40



The complete reference code will be composed of:
Rail code 0070RAIL40 plus the finish code e.g. 0070RAIL40 **01** for Anodized Aluminum



SABCO EVO

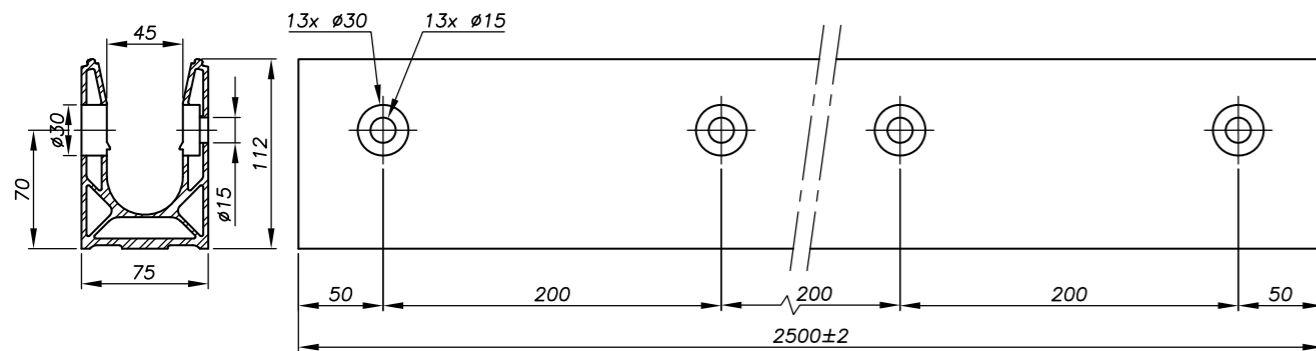
LATERAL MOUNTING



SABCO EVO - RAIL LATERAL MOUNTING 0070RAIL31



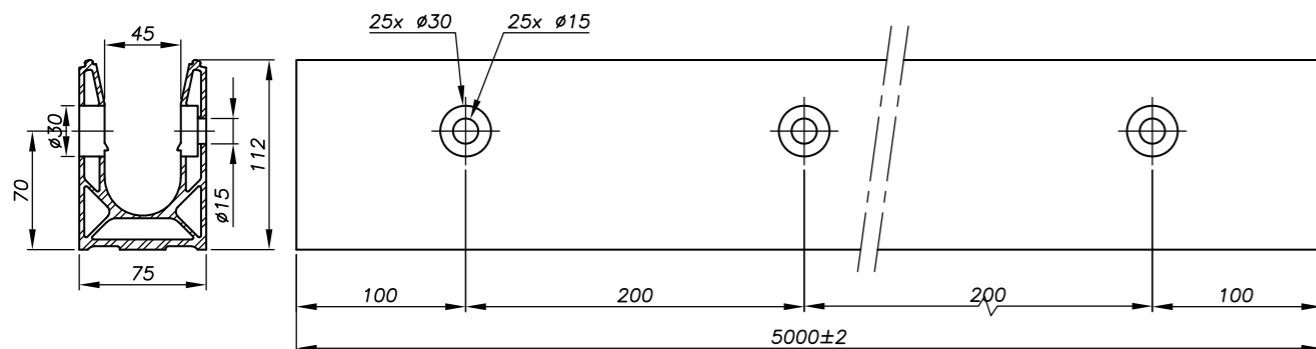
The complete reference code will be composed of:
Rail code 0070RAIL31 plus the finish code e.g. 0070RAIL31 **01** for Anodized Aluminum



SABCO EVO - RAIL LATERAL MOUNTING 0070RAIL41



The complete reference code will be composed of:
Rail code 0070RAIL41 plus the finish code e.g. 0070RAIL41 **01** for Anodized Aluminum



SABCO EVO

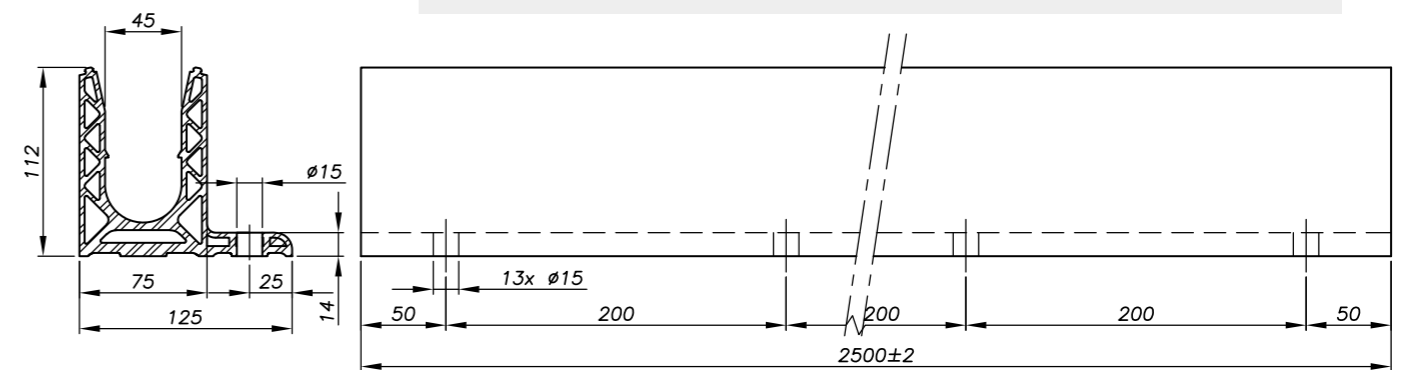
OFFSET FLOOR MOUNTING



SABCO EVO - RAIL OFFSET FLOOR MOUNTING 0070RAIL15



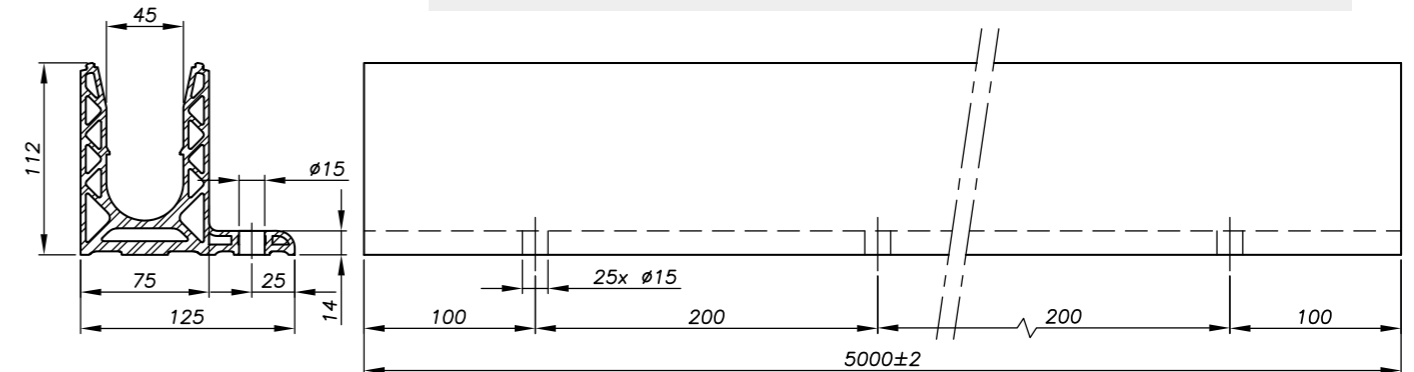
The complete reference code will be composed of:
Rail code 0070RAIL15 plus the finish code e.g. 0070RAIL15 **01** for Anodized Aluminum



SABCO EVO - RAIL OFFSET FLOOR MOUNTING 0070RAIL25



The complete reference code will be composed of:
Rail code 0070RAIL25 plus the finish code e.g. 0070RAIL25 **01** for Anodized Aluminum



RAILS TECHNICAL DRAWINGS

SABCO EVO

OFFSET FLOOR MOUNTING

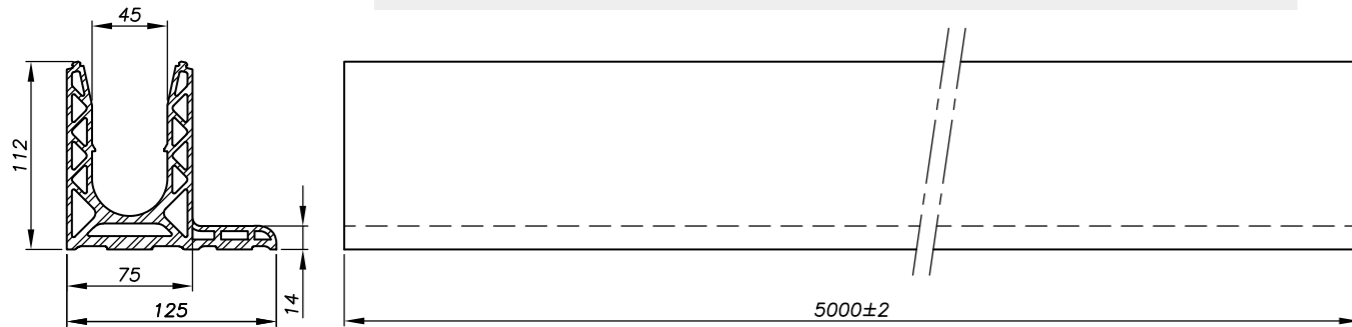


2.5 M

SABCO EVO - RAIL OFFSET NOT DRILLED FLOOR MOUNTING 0070RAIL205



The complete reference code will be composed of:
Rail code 0070RAIL205 plus the finish code e.g. 0070RAIL205 **01** for Anodized Aluminum

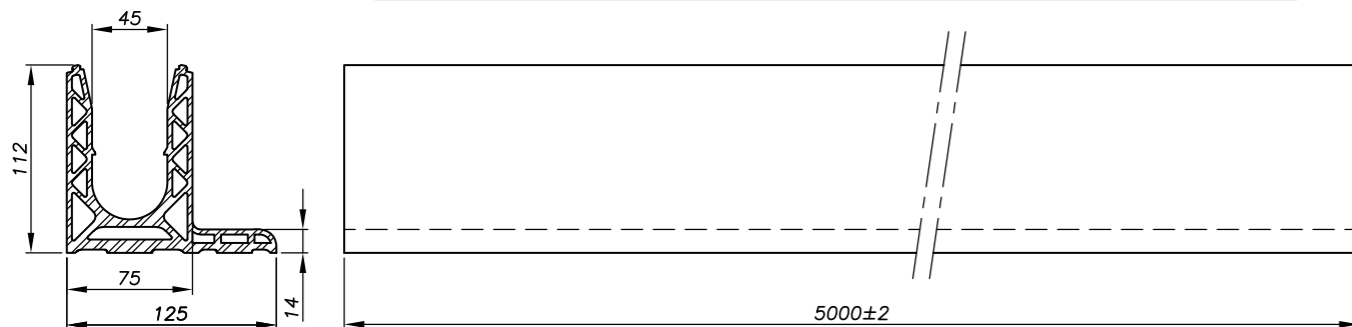


5 M

SABCO EVO - RAIL OFFSET NOT DRILLED FLOOR MOUNTING 0070RAIL505

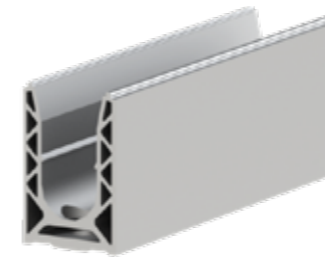


The complete reference code will be composed of:
Rail code 0070RAIL505 plus the finish code e.g. 0070RAIL505 **01** for Anodized Aluminum



SABCO X

FLOOR MOUNTING

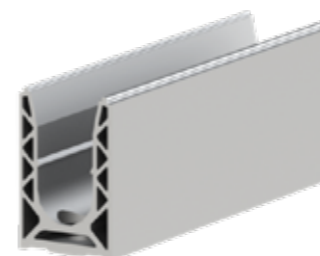
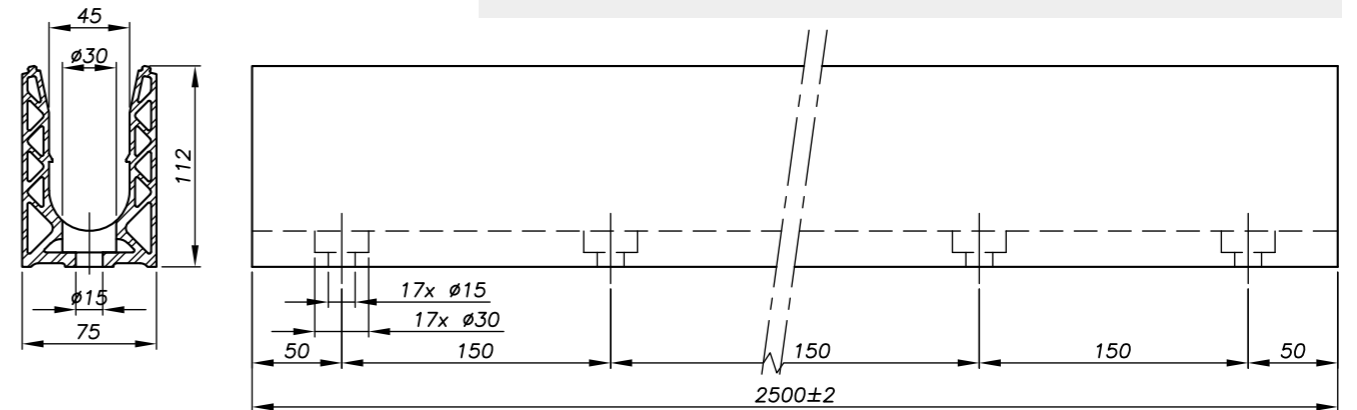


2.5 M

SABCO X - RAIL FLOOR MOUNTING 0070RAIL19



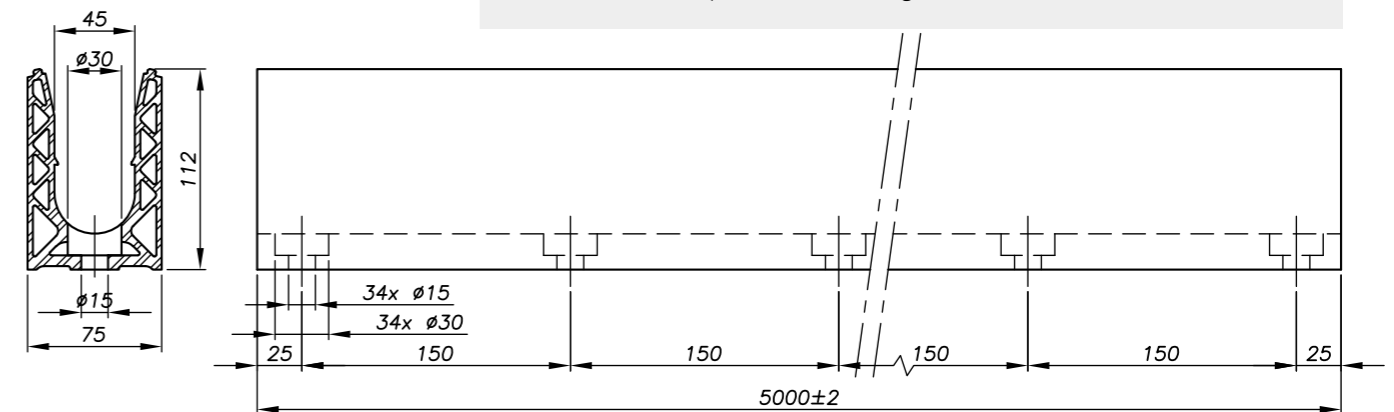
The complete reference code will be composed of:
Rail code 0070RAIL19 plus the finish code e.g. 0070RAIL19 **01** for Anodized Aluminum



SABCO X - RAIL FLOOR MOUNTING 0070RAIL29



The complete reference code will be composed of:
Rail code 0070RAIL29 plus the finish code e.g. 0070RAIL29 **01** for Anodized Aluminum



RAILS TECHNICAL DRAWINGS

SABCO X

FLOOR MOUNTING

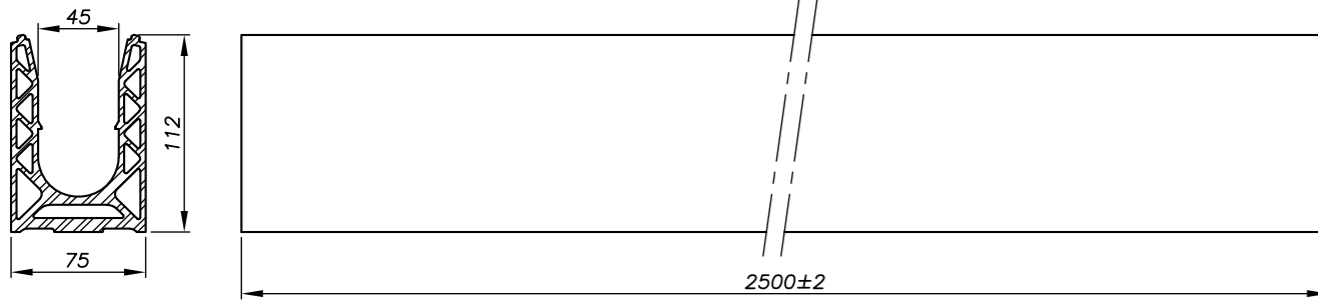


2.5 M

SABCO X - RAIL FLOOR NOT DRILLED MOUNTING 0070RAIL209

ANODIZED ALUMINUM
Code : 01

The complete reference code will be composed of:
Rail code 0070RAIL209 plus the finish code e.g. 0070RAIL209 **01** for Anodized Aluminum

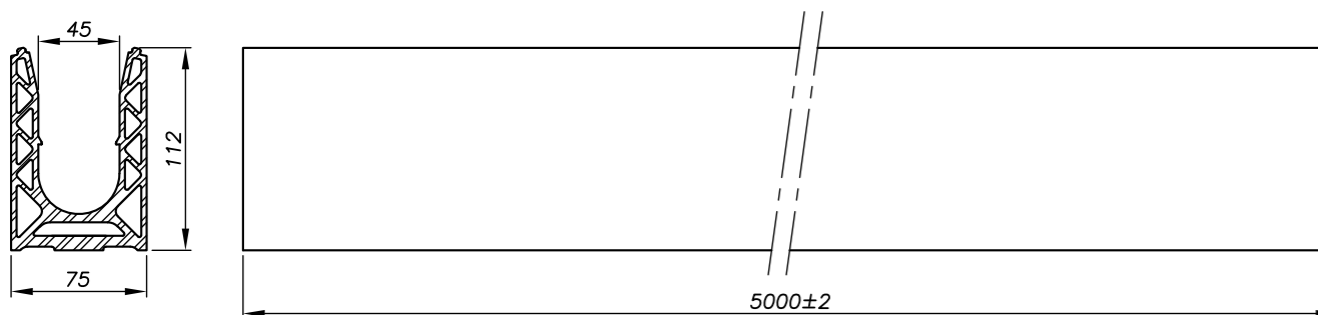


5 M

SABCO X - RAIL FLOOR NOT DRILLED MOUNTING 0070RAIL509

ANODIZED ALUMINUM
Code : 01

The complete reference code will be composed of:
Rail code 0070RAIL509 plus the finish code e.g. 0070RAIL509 **01** for Anodized Aluminum



SABCO X

DUAL FLOOR MOUNTING

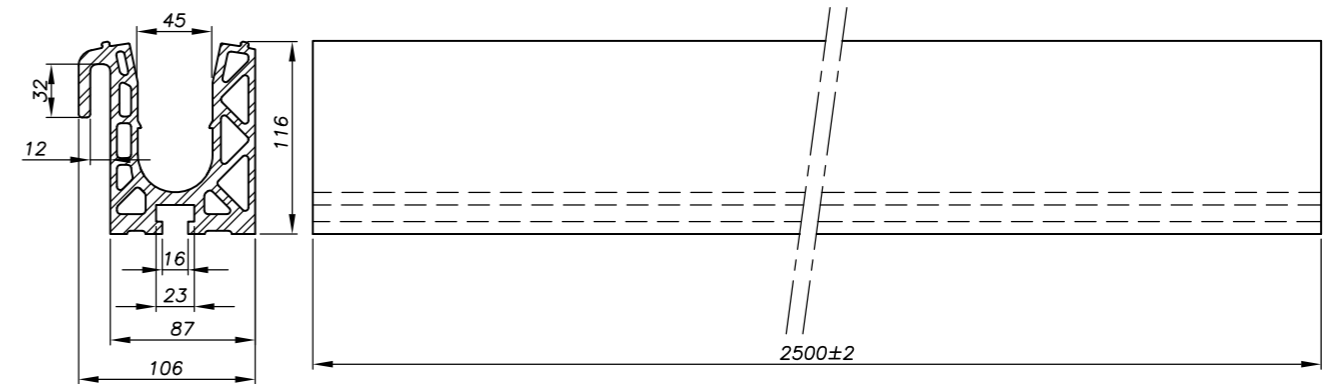


2.5 M

SABCO X - RAIL DUAL FLOOR MOUNTING 0070RAIL16

ANODIZED ALUMINUM
Code : 01

The complete reference code will be composed of:
Rail code 0070RAIL16 plus the finish code e.g. 0070RAIL16 **01** for Anodized Aluminum

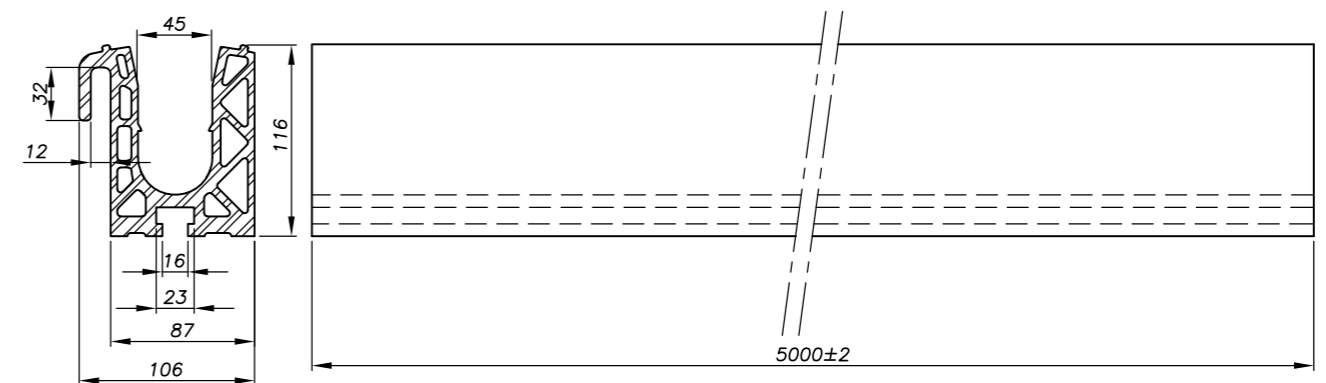


5 M

SABCO X - RAIL DUAL FLOOR MOUNTING 0070RAIL26

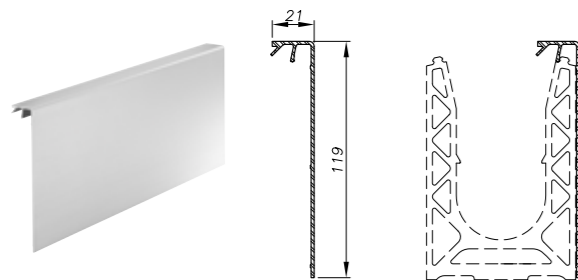
ANODIZED ALUMINUM
Code : 01

The complete reference code will be composed of:
Rail code 0070RAIL26 plus the finish code e.g. 0070RAIL26 **01** for Anodized Aluminum



CLADDINGS TECHNICAL DRAWINGS

DOUBLE SIDES CLADDING SIDE CLADDING



SIZE : 2.5m
Ref : 0070CAPO201

SIZE : 5m
Ref : 0070CAPO501

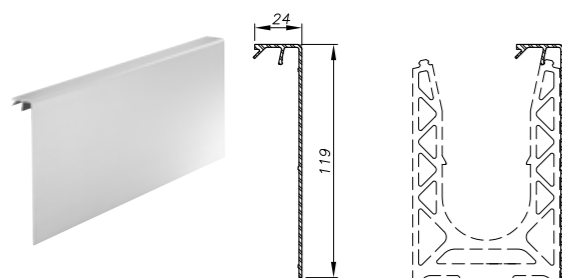
ANODIZED ALUMINUM
Code : 01

BRUSH EFFECT ALUMINUM
Code : 02

RAL
Code : 03

The complete reference code will be composed of:
Cladding code 0070CAPO201 plus the finish code e.g. 0070CAPO201 01 for Anodized Aluminum in 2,5 meters

DOUBLE SIDES CLADDING SIDE CLADDING G12&19



SIZE : 2.5m
Ref : 0070CAPO205

SIZE : 5m
Ref : 0070CAPO505

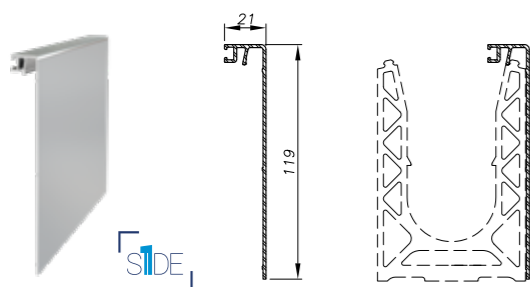
ANODIZED ALUMINUM
Code : 01

BRUSH EFFECT ALUMINUM
Code : 02

RAL
Code : 03

The complete reference code will be composed of:
Cladding code 0070CAPO205 plus the finish code e.g. 0070CAPO205 01 for Anodized Aluminum in 2,5 meters

ONE SIDE CLADDING SIDE CLADDING MIX SEAL



SIZE : 2.5m
Ref : 0070CAPO209

SIZE : 5m
Ref : 0070CAPO509

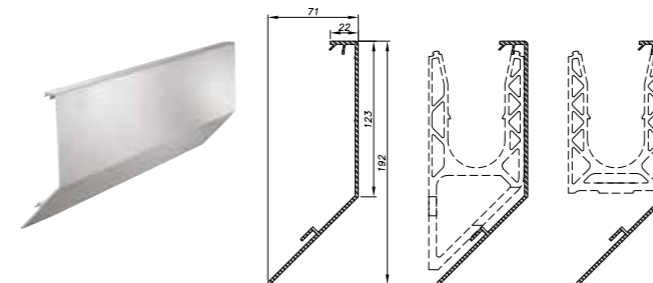
ANODIZED ALUMINUM
Code : 01

BRUSH EFFECT ALUMINUM
Code : 02

RAL
Code : 03

The complete reference code will be composed of:
Cladding code 0070CAPO209 plus the finish code e.g. 0070CAPO209 01 for Anodized Aluminum in 2,5 meters

DOUBLE SIDE CLADDING OFFSET SIDE CLADDING



SIZE : 2.5m
Ref : 0070CAPO203

SIZE : 5m
Ref : 0070CAPO503

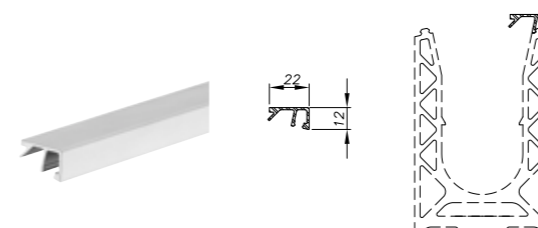
ANODIZED ALUMINUM
Code : 01

BRUSH EFFECT ALUMINUM
Code : 02

RAL
Code : 03

The complete reference code will be composed of:
Cladding code 0070CAPO203 plus the finish code e.g. 0070CAPO203 01 for Anodized Aluminum in 2,5 meters

DOUBLE SIDE CLADDING HIGH CLADDING G12&19



SIZE : 2.5m
Ref : 0070CAPO206

SIZE : 5m
Ref : 0070CAPO506

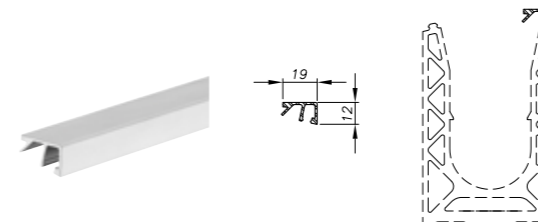
ANODIZED ALUMINUM
Code : 01

BRUSH EFFECT ALUMINUM
Code : 02

RAL
Code : 03

The complete reference code will be composed of:
Cladding code 0070CAPO206 plus the finish code e.g. 0070CAPO206 01 for Anodized Aluminum in 2,5 meters

DOUBLE SIDE CLADDING HIGH CLADDING



SIZE : 2.5m
Ref : 0070CAPO202

SIZE : 5m
Ref : 0070CAPO502

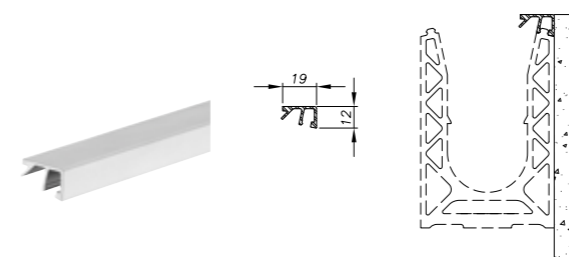
ANODIZED ALUMINUM
Code : 01

BRUSH EFFECT ALUMINUM
Code : 02

RAL
Code : 03

The complete reference code will be composed of:
Cladding code 0070CAPO202 plus the finish code e.g. 0070CAPO202 01 for Anodized Aluminum in 2,5 meters

DOUBLE SIDE CLADDING HIGH CLADDING SLAB EDGES



SIZE : 2.5m
Ref : 0070CAPO207

SIZE : 5m
Ref : 0070CAPO507

ANODIZED ALUMINUM
Code : 01

BRUSH EFFECT ALUMINUM
Code : 02

RAL
Code : 03

The complete reference code will be composed of:
Cladding code 0070CAPO207 plus the finish code e.g. 0070CAPO207 01 for Anodized Aluminum in 2,5 meters



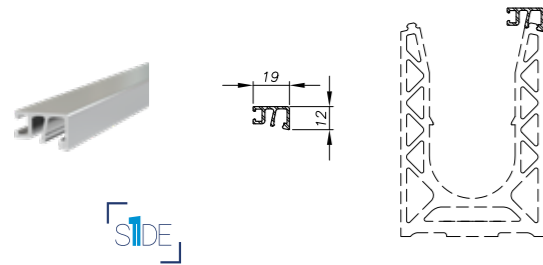
120 DIFFERENTS CLADDING CONFIGURATIONS

To find your right cladding configuration, you can mix :
FOR DOUBLE SIDES WEDGES : One Side and Double Sides cladding.
FOR ONE SIDE WEDGES : One Side and Double Sides cladding, but you must have One of the two who must be a One Side Cladding.

CLADDINGS TECHNICAL DRAWINGS

ONE SIDE
CLADDING

HIGH CLADDING MIX SEAL



SIZE : 2.5m
Ref : 0070CAPO217

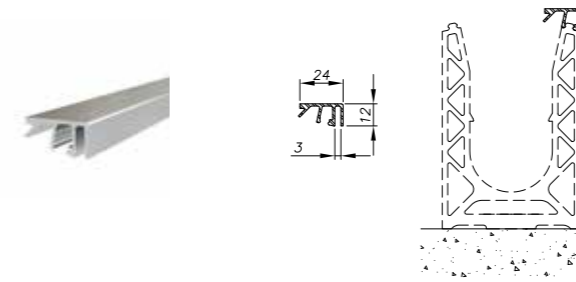
SIZE : 5m
Ref : 0070CAPO517



The complete reference code will be composed of:
Cladding code 0070CAPO217 plus the finish code e.g. 0070CAPO217 01
for Anodized Aluminum in 2,5 meters

DOUBLE SIDE
CLADDING

VERTICAL CLADDING THICKNESS 3



SIZE : 2.5m
Ref : 0070CAPO208

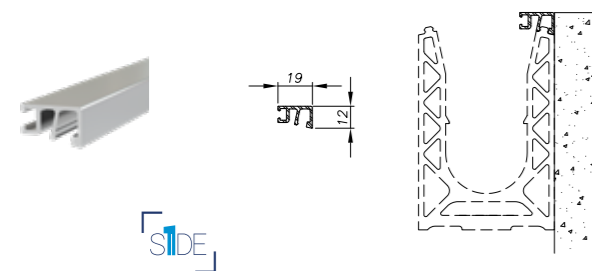
SIZE : 5m
Ref : 0070CAPO508



The complete reference code will be composed of:
Cladding code 0070CAPO208 plus the finish code e.g. 0070CAPO208 01
for Anodized Aluminum in 2,5 meters

ONE SIDE
CLADDING

HIGH CLADDING MIX SEAL SLAB EDGE



SIZE : 2.5m
Ref : 0070CAPO210

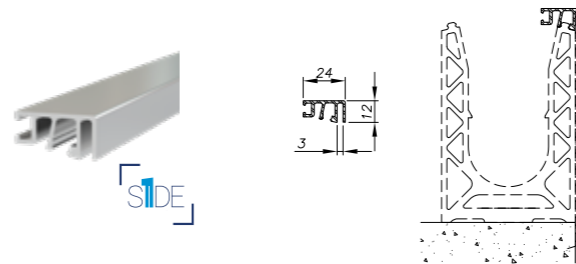
SIZE : 5m
Ref : 0070CAPO510



The complete reference code will be composed of:
Cladding code 0070CAPO210 plus the finish code e.g. 0070CAPO210 01
for Anodized Aluminum in 2,5 meters

ONE SIDE
CLADDING

VERTICAL CLADDING THICKNESS 3 MIX SEAL



SIZE : 2.5m
Ref : 0070CAPO213

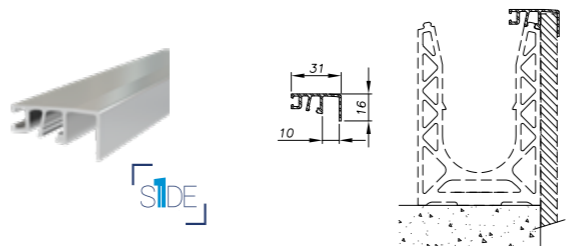
SIZE : 5m
Ref : 0070CAPO513



Your complete reference will be composed like this :
First 0070CAPO213 and you add at the end your finish code,
Ex : 0070CAPO213 01

ONE SIDE
CLADDING

VERTICAL CLADDING THICKNESS 10 MIX SEAL



SIZE : 2.5m
Ref : 0070CAPO214

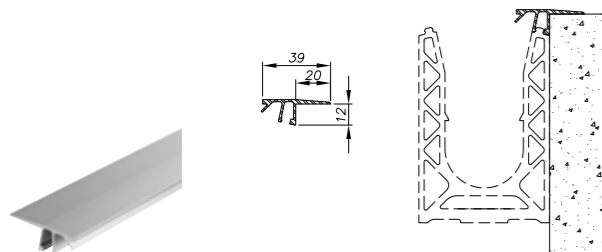
SIZE : 5m
Ref : 0070CAPO514



Your complete reference will be composed like this :
First 0070CAPO214 and you add at the end your finish code,
Ex : 0070CAPO214 01

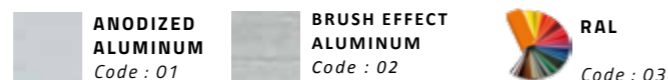
DOUBLE SIDE
CLADDING

UPPER COVER CLADDING



SIZE : 2.5m
Ref : 0070CAPO204

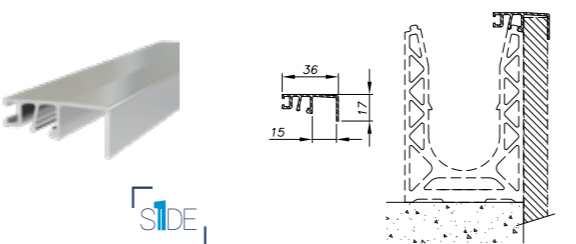
SIZE : 5m
Ref : 0070CAPO504



The complete reference code will be composed of:
Cladding code 0070CAPO210 plus the finish code e.g. 0070CAPO210 01
for Anodized Aluminum in 2,5 meters

ONE SIDE
CLADDING

HIGH CLADDING THICKNESS 15 MIX SEAL



SIZE : 2.5m
Ref : 0070CAPO215

SIZE : 5m
Ref : 0070CAPO515



Your complete reference will be composed like this :
First 0070CAPO215 and you add at the end your finish code,
Ex : 0070CAPO215 01

120 DIFFERENT CLADDING OPTIONS

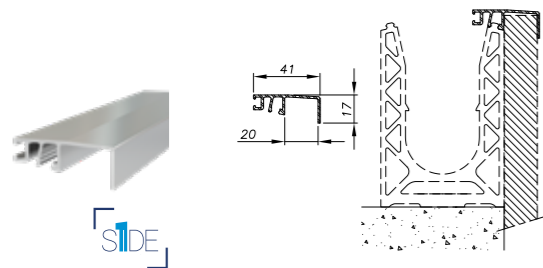
To find the right cladding configuration you can mix: for double side wedge: One side and double side cladding. For one side wedges: One side and double side cladding, but you must have one of the two which must be a one side cladding



CLADDINGS TECHNICAL DRAWINGS

ONE SIDE
CLADDING

VERTICAL CLADDING THICKNESS 20 MIX SEAL



SIZE : 2.5m

Ref : 0070CAPO216

SIZE : 5m

Ref : 0070CAPO516



ANODIZED
ALUMINUM
Code : 01



BRUSH EFFECT
ALUMINUM
Code : 02



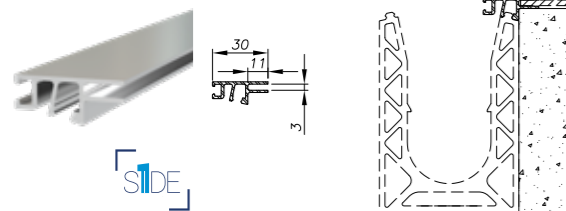
RAL

Code : 03

The complete reference code will be composed of:
Cladding code 0070CAPO216 plus the finish code e.g. 0070CAPO216 **01**
for Anodized Aluminum in 2,5 meters

ONE SIDE
CLADDING

HORIZONTAL CLADDING THICKNESS 3 MIX SEAL



SIZE : 2.5m

Ref : 0070CAPO211

SIZE : 5m

Ref : 0070CAPO511



ANODIZED
ALUMINUM
Code : 01



BRUSH EFFECT
ALUMINUM
Code : 02



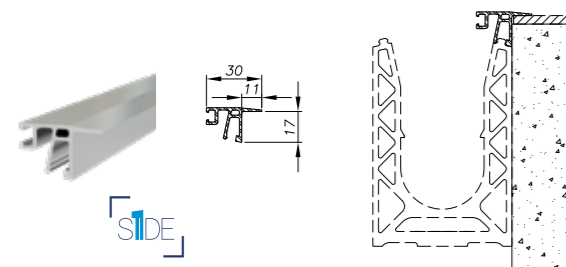
RAL

Code : 03

The complete reference code will be composed of:
Cladding code 0070CAPO211 plus the finish code e.g. 0070CAPO211 **01**
for Anodized Aluminum in 2,5 meters

ONE SIDE
CLADDING

SLAB / HORIZONTAL CLADDING THICKNESS 3 MIX SEAL



SIZE : 2.5m

Ref : 0070CAPO212

SIZE : 5m

Ref : 0070CAPO512



ANODIZED
ALUMINUM
Code : 01



BRUSH EFFECT
ALUMINUM
Code : 02



RAL

Code : 03

The complete reference code will be composed of:
Cladding code 0070CAPO212 plus the finish code e.g. 0070CAPO212 **01**
for Anodized Aluminum in 2,5 meters

END CAPS DETAILS

END CAPS FOR 0070RAIL10



SIZE : Unique

Ref : 0070CE10



ANODIZED
ALUMINUM
Code : 01



BRUSH EFFECT
ALUMINUM
Code : 02



RAL

Code : 03

The complete reference code will be composed of:
Cladding code 0070CE10 plus the finish code e.g. 0070CE10 **01**
for Anodized Aluminum in 2,5 meters

END CAPS FOR 0070RAIL11



SIZE : Unique

Ref : 0070CE11



ANODIZED
ALUMINUM
Code : 01



BRUSH EFFECT
ALUMINUM
Code : 02



RAL

Code : 03

The complete reference code will be composed of:
Cladding code 0070CE11 plus the finish code e.g. 0070CE11 **01**
for Anodized Aluminum in 2,5 meters

RIGHT END CAPS FOR 0070RAIL13

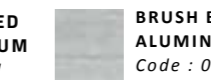


SIZE : Unique

Ref : 0070CE13D



ANODIZED
ALUMINUM
Code : 01



BRUSH EFFECT
ALUMINUM
Code : 02



RAL

Code : 03

The complete reference code will be composed of:
Cladding code 0070CE13D plus the finish code e.g. 0070CE13D **01**
for Anodized Aluminum in 2,5 meters



120 DIFFERENT CLADDING OPTIONS

To find the right cladding configuration you can mix: for double side wedge: One side and double side cladding. For one side wedges: One side and double side cladding, but you must have one of the two which must be a one side cladding.

END CAPS DETAILS

LEFT END CAPS FOR 0070RAIL13



SIZE : Unique
Ref : 0070CE13G

ANODIZED ALUMINUM
Code : 01

BRUSH EFFECT ALUMINUM
Code : 02

RAL
Code : 03

Your complete reference will be composed like this :
First 0070CE13G and you add at the end your finish code, Ex : 0070CE13G **01**

SLANT END CAPS FOR 0070RAIL10



SIZE : Unique
Ref : 0070CER10

ANODIZED ALUMINUM
Code : 01

BRUSH EFFECT ALUMINUM
Code : 02

RAL
Code : 03

The complete reference code will be composed of:
Cladding code 0070CER10 plus the finish code e.g. 0070CER10 **01**
for Anodized Aluminum

SLANT END CAPS FOR 0070RAIL11



SIZE : Unique
Ref : 0070CER11

ANODIZED ALUMINUM
Code : 01

BRUSH EFFECT ALUMINUM
Code : 02

RAL
Code : 03

The complete reference code will be composed of:
Cladding code 0070CER13 plus the finish code e.g. 0070CER13 **01**
for Anodized Aluminum in 2,5 meters

SLANT END CAPS FOR 0070RAIL13



SIZE : Unique
Ref : 0070CER13

ANODIZED ALUMINUM
Code : 01

BRUSH EFFECT ALUMINUM
Code : 02

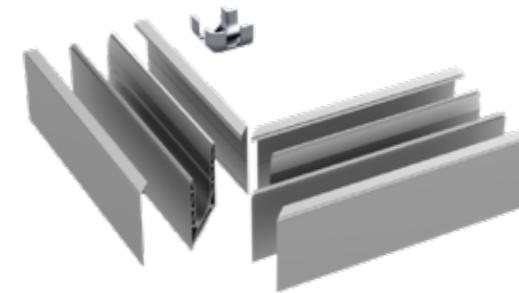
RAL
Code : 03

Your complete reference will be composed like this :
First 0070CER13 and you add at the end your finish code, Ex : 0070CER13 **01**

ANGLES KIT DETAILS

SABCO ORIGINAL

KIT 90° ANGLE



FLOOR

Ref : 0070KIT90-10

LATERAL OUTSIDE

Ref : 0070KIT90-11EXT

LATERAL INSIDE

Ref : 0070KIT90-11INT

+ 2 CLADDINGS

Ref : 0070CAPO201 / 0070CAPO207

ANODIZED ALUMINUM
Code : 01



Other Finishes
Available Upon
Request

The complete reference code will be composed of:
Cladding code 0070KIT90-10 plus the finish code e.g. 0070KIT90-10 **01**
for Anodized Aluminum, floor mounting

SABCO EVO

KIT 90° ANGLE



LATERAL INSIDE

Ref : 0070KIT90-31INT

+ 2 CLADDINGS

Ref : 0070CAPO201 / 0070CAPO207

ANODIZED ALUMINUM
Code : 01



BRUSH EFFECT ALUMINUM
Code : 02

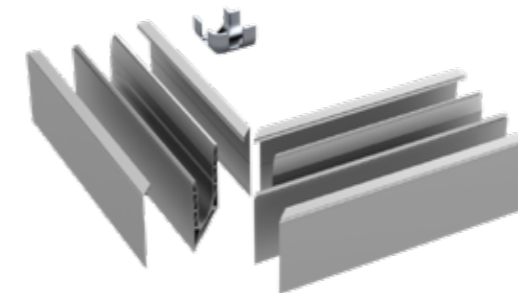


RAL
Code : 03

Your complete reference will be composed like this :
First 0070KIT90-31INT and you add at the end your finish code, Ex : 0070KIT90-31INT **01**

SABCO X

KIT 90° ANGLE



FLOOR

Ref : 0070KIT90-19

+ 2 CLADDINGS

Ref : 0070CAPO201 / 0070CAPO207

ANODIZED ALUMINUM
Code : 01



Other finish
possible on
request

Your complete reference will be composed like this :
First 0070KIT90-19 and you add at the end your finish code, Ex : 0070KIT90-19 **01**



ANGLE KITS

These kits are an example by product range, for other possible configurations not shown please contact our technical department.

WEDGES DETAILS

DOUBLE SIDES WEDGES

KIT OF 10 WEDGES FOR 8.8 GLASS



Glass thickness [min ; max]
 16,76 0/-0.5 [16,26 ; 16,76]
 17,52 0/-0.5 [17,02 ; 17,52]

SIZE : For 8.8 Glass
Ref : 0070KIT10CALE0808

KIT OF 10 WEDGES FOR 10.10 GLASS



Glass thickness [min ; max]
 20,76 0/-0.5 [20,26 ; 20,76]
 21,52 0/-0.5 [21,02 ; 21,52]
 20,64 (13/16") 0/-0.5 [20,14 ; 20,64]

SIZE : For 10.10 Glass
Ref : 0070KIT10CALE1010

KIT OF 10 WEDGES FOR 12.12 GLASS



Glass thickness [min ; max]
 24,76 0/-0.5 [24,26 ; 24,76]
 25 0/-0.5 [24,5 ; 25]
 25,52 0/-0.5 [25,02 ; 25,52]

SIZE : For 12.12 Glass
Ref : 0070KIT10CALE1212

KIT OF 10 WEDGES FOR 12 GLASS



Glass thickness [min ; max]
 12 0/-0.5 [11,5 ; 12]
 12,76 0/-0.5 [12,26 ; 12,76]

SIZE : For 12 Glass
Ref : 0070KIT10CALE12

KIT OF 10 WEDGES FOR 19 GLASS



Glass thickness [min ; max]
 19 0/-0.5 [18,5 ; 19]

SIZE : For 19 Glass
Ref : 0070KIT10CALE19

DOUBLE SIDES WEDGES

KIT OF 10 WEDGES FOR 15 GLASS



Glass thickness [min ; max]
 15 0/-0.5 [14,5 ; 15]
 14,29 (9/16") 0/-0.5 [13,79 ; 14,29]

SIZE : For 15 Glass
Ref : 0070KIT10CALE15

SABCO X - DOUBLE SIDES HEAVY DUTY PERFORMANCE

KIT OF 20 WEDGES FOR RAIL X - 12-12 GLASS



Glass thickness [min ; max]
 24,76 0/-0.5 [24,26 ; 24,76]
 25 0/-0.5 [24,5 ; 25]
 25,52 0/-0.5 [25,02 ; 25,52]

**SIZE : HEAVY DUTY
PERFORMANCE for 12 Glass**
Ref : 0070KIT20CALE1212X

ONE SIDE WEDGES

KIT OF 8 WEDGES FOR ONE SIDE 8.8 GLASS



Glass thickness [min ; max]
 16,76 0/-0.5 [16,26 ; 16,76]
 17,52 0/-0.5 [17,02 ; 17,52]

SIZE : For ONE SIDE - 8.8 Glass
Ref : 0070KIT08CAL150808

KIT OF 8 WEDGES FOR ONE SIDE - 10.10 GLASS



Glass thickness [min ; max]
 20,76 0/-0.5 [20,26 ; 20,76]
 21,52 0/-0.5 [21,02 ; 21,52]
 20,64 (13/16") 0/-0.5 [20,14 ; 20,64]

SIZE : For ONE SIDE - 10.10 Glass
Ref : 0070KIT08CAL151010



SABCO WEDGES

The usage of the correct wedges is dictated by the size of the glass panels.
 Refer to the instructions to calculate the exact number of wedges.

LIGHT DETAILS



SEAL DETAILS

LED STRIP 9.6W/M 24V 120LED/M

LED STRIP COLOUR



NEUTRAL WHITE
Ref : 007-LED-BLC-NTR-5M
Size : 5m



WARM WHITE
Ref : 007-LED-BLC-CHD-5M
Size : 5m



RED
Ref : 007-LED-ROUGE-5M
Size : 5m



GREEN
Ref : 007-LED-VERT-5M
Size : 5m



COOL WHITE
Ref : 007-LED-BLC-FRD-5M
Size : 5m



BLUE
Ref : 007-LED-BLEU-5M
Size : 5m



YELLOW
Ref : 007-LED-JAUNE-5M
Size : 5m

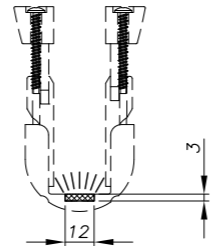
SUPPORT WEDGES FOR LED STRIP



Led support
Ref : 0070CALE-LED



Support required to protect LED strips when using 12 mm glass panels



POWER SUPPLY AC 230V/DC24V 24V 150W



For 5M led
Ref : 009-ALIM230/24-60

For 10M led
Ref : 009-ALIM230/24-100

For 15M led
Ref : 009-ALIM230/24-150

For 25M led
Ref : 009-ALIM230/24-240



DOUBLE SIDES SEALS

CLADDING SEAL BLACK

GLASS 9/16 AND 15
Ref : 0070JOINT9/16

GLASS 08.08
Ref : 0070JOINT0808

GLASS 10.10
Ref : 0070JOINT1010

GLASS 12.12
Ref : 0070JOINT1212

CLADDING SEAL GREY

GLASS 08.08
Ref : 0070JOINT0808G

GLASS 10.10
Ref : 0070JOINT1010G

GLASS 12.12
Ref : 0070JOINT1212G



ONE SIDE SEAL

ONE SIDE CLADDING SEAL BLACK

GLASS 08.08
Ref : 0070JOINT0808C

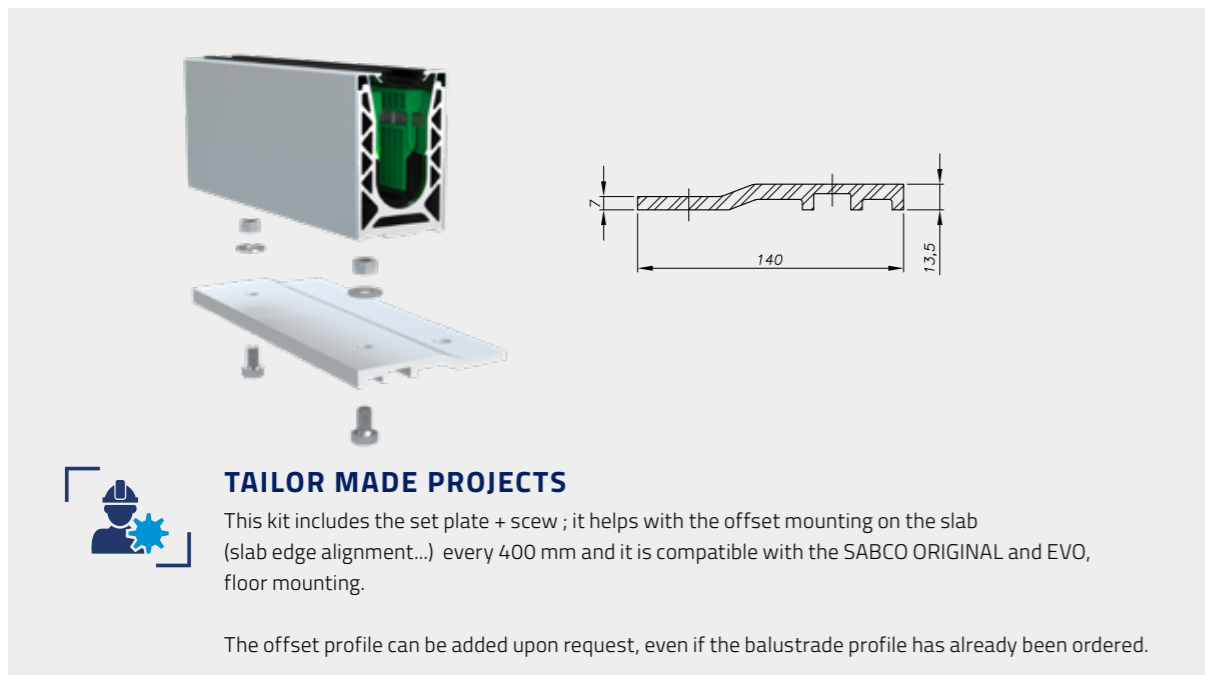
GLASS 10.10
Ref : 0070JOINT1010C



SABCO OPTIONS

OFFSET FLOOR KIT

OFFSET FLOOR MOUNTING PLATE KIT



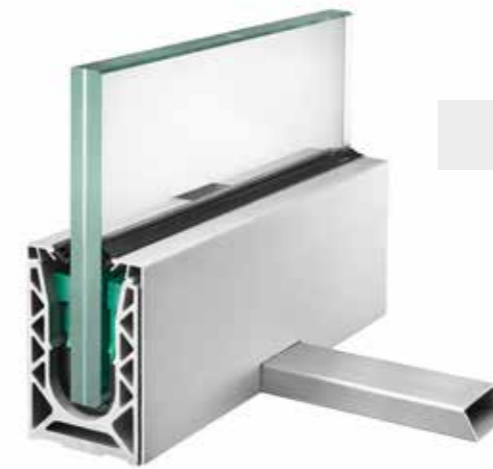
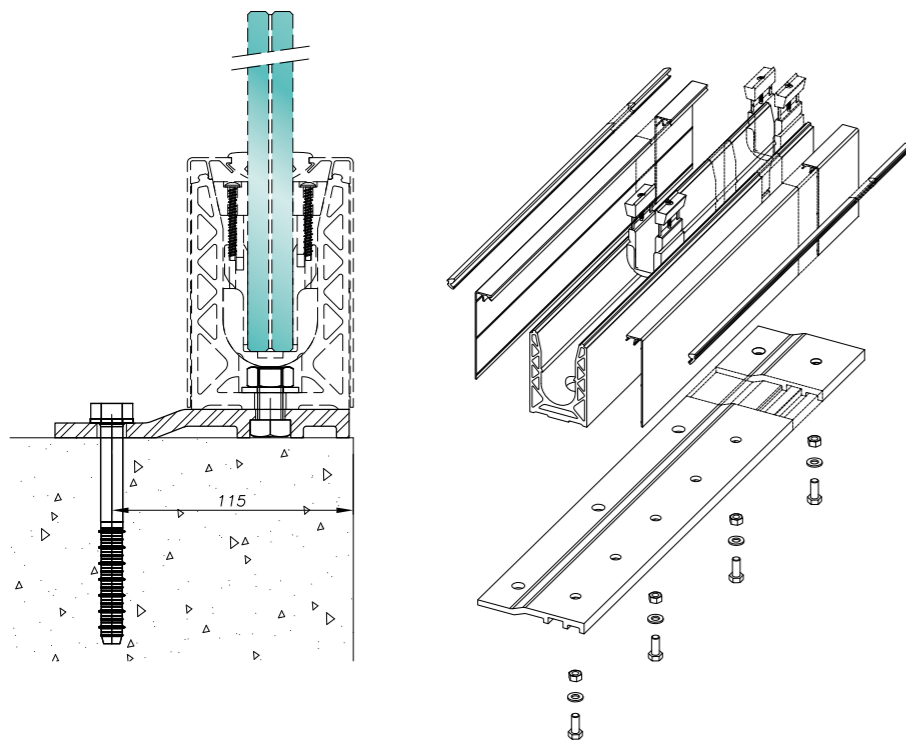
TAILOR MADE PROJECTS

This kit includes the set plate + screw ; it helps with the offset mounting on the slab (slab edge alignment...) every 400 mm and it is compatible with the SABCO ORIGINAL and EVO, floor mounting.

The offset profile can be added upon request, even if the balustrade profile has already been ordered.

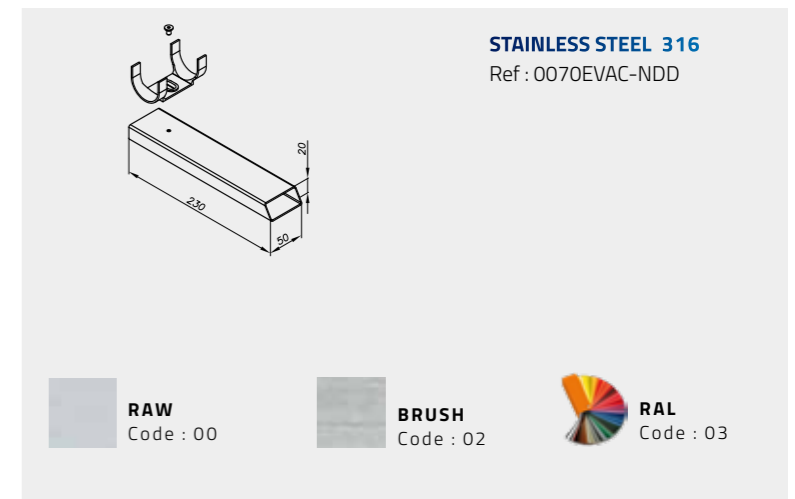
KIT INCLUDED SET PLACE + SCREW

Ref : 0070SEMV-2



EVACUATION PROFILE

SCUPPER PROFILE KIT

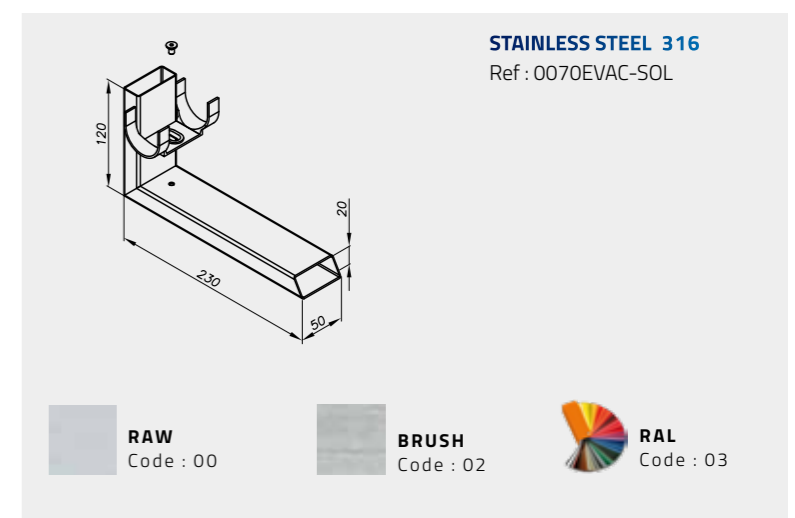


STAINLESS STEEL 316
Ref : 0070EVAC-NDD

RAW
Code : 00

BRUSH
Code : 02

RAL
Code : 03



STAINLESS STEEL 316
Ref : 0070EVAC-SOL

RAW
Code : 00

BRUSH
Code : 02

RAL
Code : 03

SABCO HANDRAILS

ALUMINUM U CAP RAIL



2.5 M

Glass Thickness	Size	Reference
6.6	14X8	0010201408250
8.8	19x8	0010201908250
10.10	23x8	0010202308250
12.12	27x8	0010202708250

ANODIZED ALUMINUM
Code : 01

BRUSH EFFECT ALUMINUM
Code : 02

RAL
Code : 03

Your complete reference will be composed like this :
First 0010201408250 and you add at the end your finish code, Ex : 0010201408250 **01**



5 M

Glass Thickness	Size	Reference
6.6	14X8	0010201408500
8.8	19x8	0010201908500
10.10	23x8	0010202308500
12.12	27x8	0010202708500

ANODIZED ALUMINUM
Code : 01

BRUSH EFFECT ALUMINUM
Code : 02

RAL
Code : 03

Your complete reference will be composed like this :
First 0010201408500 and you add at the end your finish code, Ex : 0010201408500 **01**



SPACER BETWEEN GLASS THICKNESS 5MM BLACK

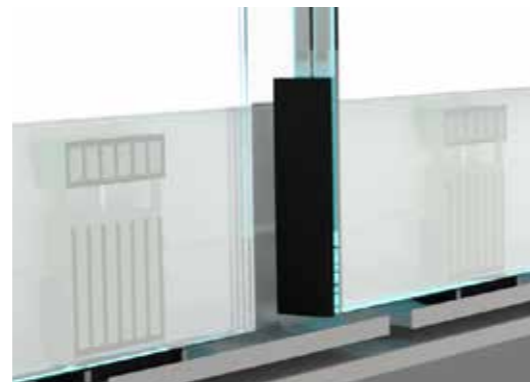


SPACER THICKNESS 5 MM BETWEEN GLASS

- Ref : 0070ESPAC0808 - Glass : 08.08
- Ref : 0070ESPAC1010 - Glass : 10.10
- Ref : 0070ESPAC12 - Glass : 12
- Ref : 0070ESPAC1212 - Glass : 12.12
- Ref : 0070ESPAC15 - Glass : 15
- Ref : 0070ESPAC19 - Glass : 19

Helps maintain regular spacing intervals between the glass panels.

++ For a better protection against dust and water, 5 mm width



TORX BIT 1/4



It allows tightening the glass in the wedges.

++ Ease of operation, practical, good tightening performance, tamperproof

T20 LG150

Ref : 007-TORX-T20/150

ALIGNMENT PINS



SABCO ORIGINAL AND X

Material : STAINLESS STEEL
Ref : 007D1481A1-08-50

Allow for assembling the rail together.

++ Save time, Alignment

SABCO EVO

Material : ALUMINIUM
Ref : 007Goup-EVO-14-40

PACK SCREWDRIVER + TORX BIT 1/4



Allows for tightening of the wedges to secure the glass panels.

++ Ease of operation, practical, good tightening performance, tamperproof



Order minimum 1 for tightening conformity

SCREWDRIVER + TORX

Size : 2 NM
Code : 007-TRVS-2NM

WALL PLUG



HSL M8/20

Quantity : BOX OF 40 PCS
Material : STAINLESS STEEL
Ref : 09HSLM8/20

CONCRETE SCREW

Anchor for floor mounting ; depends on the class of concrete and depends also the rail configuration.



HUS3-H 10x70

Quantity : BOX OF 50 PCS
Material : ZINC STEEL
Ref : 09HUS3-H10x70

HUS-HR 10x70

Quantity : BOX OF 40 PCS
Material : STAINLESS STEEL
Ref : 09HSLM8/20

PART 2
SABCO Products

SET UP INSTRUCTIONS



DO IT YOURSELF

FLOOR MOUNTING



OFFSET MOUNTING



// 01



Mount the rail.

// 02



Install the U wedges.

// 03



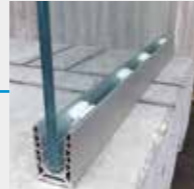
Install the glass.

// 04



Simultaneously adjust vertical alignment and tighten clamp.

// 05



Attach the profile covers.

// 06



Press in the seals.

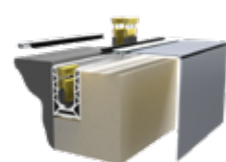
// 07



Install the end caps.



LATERAL MOUNTING



// 01



Mount the rail.

// 02



Install the U wedges.

// 03



Install the glass.

// 04



Simultaneously adjust vertical alignment and tighten clamp.

// 05



Attach the profile covers.

// 06



Press in the seals.

// 07



Install the end caps.



SABCO ORIGINAL

SABCO EVO

SABCO X

HOW TO MOUNT ALL THE SABCO RAILS IN 7 EASY STEPS

OFFSET FIXING



DOWNLOAD OUR VIDEO
<http://bit.ly/SADEV-YOUTUBE>

// 01



Mount the rail.

// 02



Install the U wedges.

// 03



Install the glass.

// 04



Simultaneously adjust vertical alignment and tighten clamp.

// 05



Attach the profile covers.

// 06



Press in the seals.

// 07



Install the end caps.



BUILT IN SLAB MOUNTING



// 01



Mount the rail.

// 02



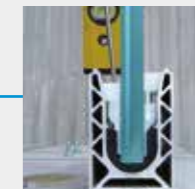
Install the U wedges.

// 03



Install the glass.

// 04



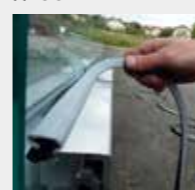
Simultaneously adjust vertical alignment and tighten clamp.

// 05



Attach the profile covers.

// 06

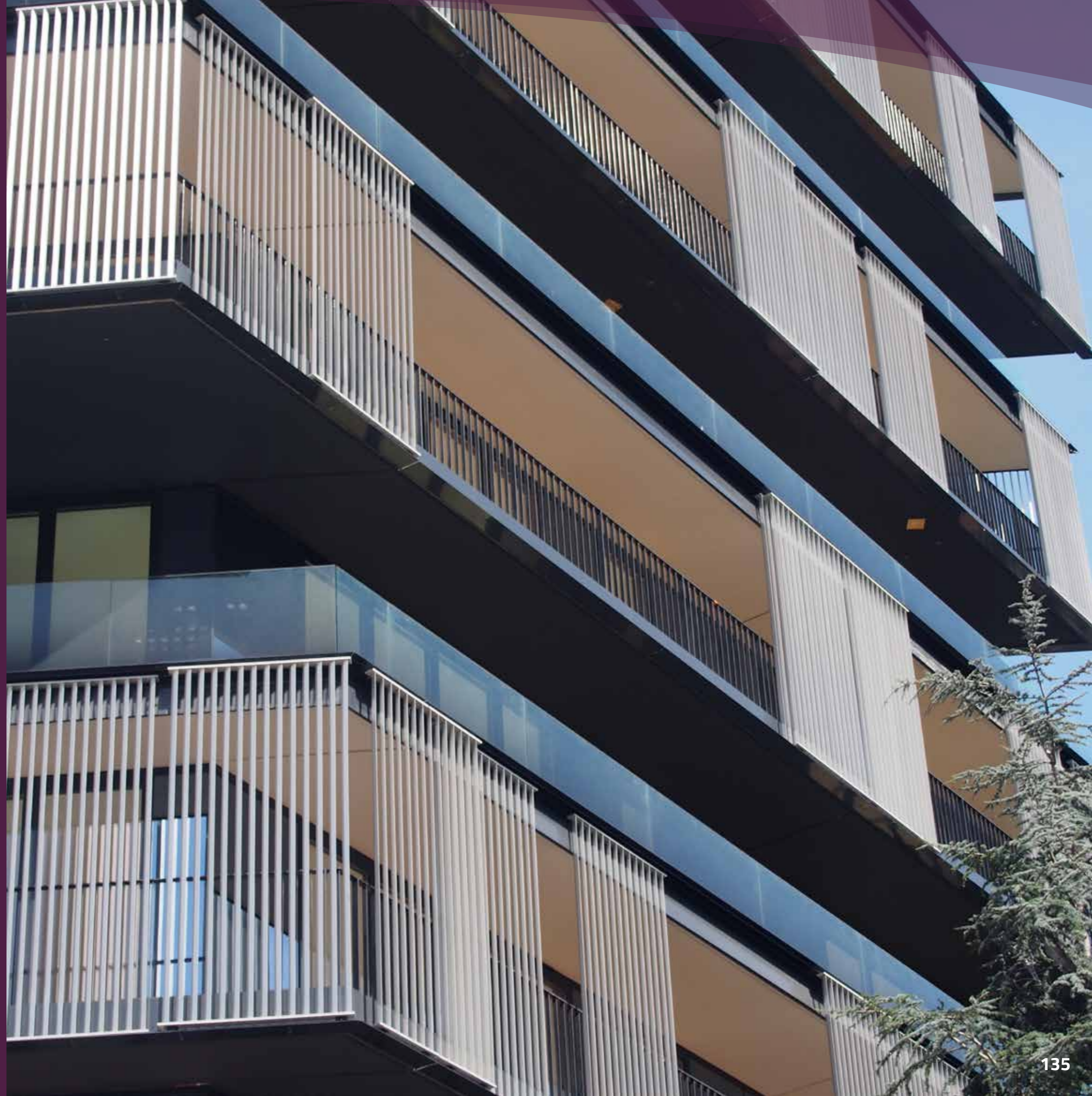


Press in the seals.



PART 2
SABCO Products

PERFORMANCE
BY COUNTRY



PERFORMANCE & LOADS

FRANCE APPROVED



FRENCH TECHNICAL APPRAISAL 3034 FROM CSTB
 Technical Appraisal n°2.1/15-1673_V2
 Technical Appraisal n°2.1/18-1791_V1

NOTEBOOK 3034 OF CSTB
 NF P 01-012:1988
 NF P 01-012:1988

Static load	PRIVATE				PUBLIC				STADIUM (OLD STANDARD)		STADIUM
	0,6 to 1,8kN/ml 700J & 900J				1 to 3kN/ml 700J & 900J				1,7 to 5,1kN/ml 700J & 900J		3 to 9kN/ml 700J & 900J
SABCO	SABCO ORIGINAL		SABCO EVO		SABCO ORIGINAL		SABCO EVO		SABCO ORIGINAL		SABCO X
GLASS	PROFIL	FLOOR 7010	LATERAL 7011 BUILD-IN-SLAP 7012	LATERAL OFFSET FIXING 7013	FLOOR 7030	LATERAL 7031	FLOOR 7010	LATERAL 7011 BUILD-IN-SLAP 7012	LATERAL OFFSET FIXING 7013	FLOOR 7030	LATERAL 7031
88/2 PVB Tempered	4W/m 400mm			5W/m 400mm							
88/2 EVA Tempered	4W/m 400mm			5W/m 400mm							
88/2 Trosifol ES Tempered	4W/m 400mm	4W/m 200mm	4W/m 400mm	5W/m 400mm		4W/m 400mm	4W/m 200mm	4W/m 400mm	5W/m 200mm		
88/2 DG41 Tempered	4W/m 400mm	4W/m 200mm	4W/m 400mm	5W/m 400mm		4W/m 400mm	4W/m 200mm	4W/m 400mm	5W/m 200mm		
1010/4 PVB Tempered	4W/m 400mm	4W/m 200mm	4W/m 400mm	5W/m 400mm	5W/m 200mm	4W/m 400mm	4W/m 200mm	4W/m 400mm	5W/m 200mm	5W/m 200mm	
1010/2 EVA Tempered	4W/m 400mm	4W/m 200mm	4W/m 400mm	5W/m 400mm	5W/m 200mm	4W/m 400mm	4W/m 200mm	4W/m 400mm	5W/m 200mm	5W/m 200mm	
1010/2 Trosifol ES Tempered	4W/m 400mm	4W/m 200mm	4W/m 400mm	5W/m 400mm	5W/m 200mm	4W/m 400mm	4W/m 200mm	4W/m 400mm	5W/m 200mm	5W/m 200mm	8W/m 150mm
1010/2 DG41 Tempered	4W/m 400mm	4W/m 200mm	4W/m 400mm	5W/m 400mm	5W/m 200mm	4W/m 400mm	4W/m 200mm	4W/m 400mm	5W/m 200mm	5W/m 200mm	8W/m 150mm
1010/2 Serac 50 Tempered	4W/m 400mm	4W/m 200mm	5W/m 400mm	5W/m 400mm	5W/m 200mm	4W/m 400mm	4W/m 200mm	4W/m 500mm	5W/m 200mm	5W/m 200mm	5W/m 200mm
1010/2 Serac 50 Notempered	4W/m 400mm										
1212/2 Serac 60 Notempered	4W/m 400mm	5W/m 200mm	5W/m 400mm								
1212/4 PVB Tempered	4W/m 400mm	4W/m 200mm	4W/m 400mm	5W/m 400mm	5W/m 200mm	4W/m 400mm	4W/m 200mm	4W/m 400mm	5W/m 200mm	5W/m 200mm	5W/m 200mm
1212/2 EVA Tempered	4W/m 400mm	4W/m 200mm	4W/m 400mm	5W/m 400mm	5W/m 200mm	4W/m 400mm	4W/m 200mm	4W/m 400mm	5W/m 200mm	5W/m 200mm	8W/m 150mm
1212/1 SGP Tempered											8W/m 150mm

LEGEND

SABCO ORIGINAL

4W/m
400mm SABCO ORIGINAL
 Sous Avis Technique

4W/m
400mm SABCO ORIGINAL
 AT Rated satisfactory

SABCO EVO

4W/m
400mm SABCO EVO
 Sous Avis Technique

4W/m
400mm SABCO EVO
 AT Rated satisfactory

SABCO X

8W/m
150mm SABCO X
 Sous Avis Technique

8W/m
150mm SABCO X
 AT Rated satisfactory

4W/m = 4 Wedges / meter
 400mm = Profile fixing suitable every 400 mm.

PERFORMANCE & LOADS

GERMAN APPROVED



ABP Nr 16-057P
 German regulation DIN
 18008-4

Static load	PRIVATE				PUBLIC	
	0,5kN/ml				1kN/ml	
Dynamic load	900J				900J	
SABCO	SABCO ORIGINAL				SABCO ORIGINAL	
GLASS	PROFIL	FLOOR 7010	LATERAL 7011 BUILD-IN-SLAP 7012	LATERAL OFFSET FIXING 7013	FLOOR 7010	LATERAL 7011 BUILD-IN-SLAP 7012
1010/2 PVB TVG Heat-strengthened	4W/m 400 mm	4W/m 200 mm	4W/m 400 mm	4W/m 200 mm	4W/m 200 mm	4W/m 200 mm
1010/2 EVA TVG Heat-strengthened	4W/m 400 mm	4W/m 200 mm	4W/m 400 mm	4W/m 200 mm	4W/m 200 mm	4W/m 200 mm
1010/2 DG41 TVG Heat-strengthened	4W/m 400 mm	4W/m 200 mm	4W/m 400 mm	4W/m 200 mm	4W/m 200 mm	4W/m 200 mm
1010/2 Trosifol ESTVG Heat-strengthened	4W/m 400 mm	4W/m 200 mm	4W/m 400 mm	4W/m 200 mm	4W/m 200 mm	4W/m 200 mm
1010/2 SGP TVG Heat-strengthened	4W/m 400 mm	4W/m 200 mm	4W/m 400 mm	4W/m 200 mm	4W/m 200 mm	4W/m 200 mm
1010/2 PVB ESG Tempered	4W/m 400 mm	4W/m 200 mm	4W/m 400 mm	4W/m 200 mm	4W/m 200 mm	4W/m 200 mm
1010/2 EVA ESG Tempered	4W/m 400 mm	4W/m 200 mm	4W/m 400 mm	4W/m 200 mm	4W/m 200 mm	4W/m 200 mm
1010/2 DG41 ESG Tempered	4W/m 400 mm	4W/m 200 mm	4W/m 400 mm	4W/m 200 mm	4W/m 200 mm	4W/m 200 mm
1010/2 Trosifol ES ESG Tempered	4W/m 400 mm	4W/m 200 mm	4W/m 400 mm	4W/m 200 mm	4W/m 200 mm	4W/m 200 mm
1010/2 SGP ESG Tempered	4W/m 400 mm	4W/m 200 mm	4W/m 400 mm	4W/m 200 mm	4W/m 200 mm	4W/m 200 mm
1212/2 PVB TVG Heat-strengthened	4W/m 400 mm	4W/m 200 mm	4W/m 400 mm	4W/m 200 mm	4W/m 200 mm	4W/m 200 mm
1212/2 EVA TVG Heat-strengthened	4W/m 400 mm	4W/m 200 mm	4W/m 400 mm	4W/m 200 mm	4W/m 200 mm	4W/m 200 mm
1212/2 DG41 TVG Heat-strengthened	4W/m 400 mm	4W/m 200 mm	4W/m 400 mm	4W/m 200 mm	4W/m 200 mm	4W/m 200 mm
1212/2 Trosifol ESTVG Heat-strengthened	4W/m 400 mm	4W/m 200 mm	4W/m 400 mm	4W/m 200 mm	4W/m 200 mm	4W/m 200 mm
1212/2 SGP TVG Heat-strengthened	4W/m 400 mm	4W/m 200 mm	4W/m 400 mm	4W/m 200 mm	4W/m 200 mm	4W/m 200 mm
1212/2 PVB ESG Tempered	4W/m 400 mm	4W/m 200 mm	4W/m 400 mm	4W/m 200 mm	4W/m 200 mm	4W/m 200 mm
1212/2 EVA ESG Tempered	4W/m 400 mm	4W/m 200 mm	4W/m 400 mm	4W/m 200 mm	4W/m 200 mm	4W/m 200 mm
1212/2 DG41 ESG Tempered	4W/m 400 mm	4W/m 200 mm	4W/m 400 mm	4W/m 200 mm	4W/m 200 mm	4W/m 200 mm
1212/2 Trosifol ES ESG Tempered	4W/m 400 mm	4W/m 200 mm	4W/m 400 mm	4W/m 200 mm	4W/m 200 mm	4W/m 200 mm
1212/2 SGP ESG Tempered	4W/m 400 mm	4W/m 200 mm	4W/m 400 mm	4W/m 200 mm	4W/m 200 mm	4W/m 200 mm

LEGEND

SABCO ORIGINAL

4W/m
400mm SABCO ORIGINAL
 Under ABP

4W/m
400mm SABCO ORIGINAL
 ABP Rated satisfactory

4W/m = 4 Wedges / meter
 400mm = Profile fixing suitable every 400 mm.

PERFORMANCE & LOADS

ITALY APPROVED



ITALY STANDARD
UNI 11678:2017

Static load	1 to 1,5kN/ml		2 to 3kN/ml		3 to 4,5kN/ml		
Dynamic load	350J (Height 700mm)		350J (Height 700mm)		600J (Height 1200mm)		
SABCO	SABCO ORIGINAL		SABCO ORIGINAL		SABCO ORIGINAL		
GLASS	PROFIL	FLOOR 7010	LATERAL 7011	FLOOR 7010	LATERAL 7011	FLOOR 7010	LATERAL 7011
1010/4 EVA Tempered	5W/m 200 mm	5W/m 200 mm	5W/m 200 mm				
1010/4 DG41 Tempered	5W/m 200 mm	5W/m 200 mm	5W/m 200 mm	5W/m 200 mm	5W/m 200 mm		
1010/4 Trosifol ES Tempered	5W/m 200 mm	5W/m 200 mm	5W/m 200 mm	5W/m 200 mm	5W/m 200 mm		
1010/2 SGP Tempered	5W/m 200 mm	5W/m 200 mm	5W/m 200 mm	5W/m 200 mm	5W/m 200 mm		
1212/4 EVA Tempered	5W/m 200 mm	5W/m 200 mm	5W/m 200 mm	5W/m 200 mm	5W/m 200 mm		
1212/4 DG41 Tempered	5W/m 200 mm	5W/m 200 mm	5W/m 200 mm	5W/m 200 mm	5W/m 200 mm	5W/m 200 mm	
1212/4 Trosifol ES Tempered	5W/m 200 mm	5W/m 200 mm	5W/m 200 mm	5W/m 200 mm	5W/m 200 mm	5W/m 200 mm	
1212/2 SGP Tempered	5W/m 200 mm	5W/m 200 mm	5W/m 200 mm	5W/m 200 mm	5W/m 200 mm	5W/m 200 mm	

LEGEND

SABCO ORIGINAL

5W/m
200mm SABCO ORIGINAL
Under Italy standard

5W/m
200mm SABCO ORIGINAL
Italy standard Rated satisfactory

5 W/m = 5 Wedges / meter
200mm = Profile fixing suitable every 200 mm.

PERFORMANCE & LOADS

UNITED KINGDOM APPROVED



BRITISH STANDARD
BS EN 6180:2011

Static load	0,36 kN/ml						0,74 kN/ml				1,5 kN/ml		3 kN/ml					
SABCO	SABCO ORIGINAL			SABCO EVO			SABCO ORIGINAL		SABCO EVO		SABCO ORIGINAL	SABCO EVO	SABCO X					
GLASS	PROFIL	FLOOR 7010	LATERAL 7011 BUILD-IN-SLAP 7012	LATERAL OFFSET FIXING 7013	FLOOR 7030	LATERAL 7031	SOL 7010	LATERAL 7011 BUILD-IN-SLAP 7012	LATERAL OFFSET FIXING 7013	SOL 7030	LATERAL 7031	FLOOR 7010	LATERAL 7011 BUILD-IN-SLAP 7012	LATERAL OFFSET FIXING 7013	FLOOR 7030	LATERAL 7031	FLOOR 7019	FLOOR 7019
15mm Monolithic	4W/m 400mm	4W/m 400mm	4W/m 400mm	4W/m 400mm	4W/m 400mm	4W/m 400mm	4W/m 400mm	4W/m 400mm	4W/m 400mm	4W/m 400mm								
88/2 PVB Tempered	4W/m 400mm	4W/m 400mm	4W/m 400mm															
88/2 EVA Tempered	4W/m 400mm	4W/m 400mm	4W/m 400mm															
88/2 Trosifol ES Treppe	4W/m 400mm	4W/m 400mm	4W/m 400mm				4W/m 400mm	4W/m 400mm	4W/m 400mm									
88/2 DG41 Tempered	4W/m 400mm	4W/m 400mm	4W/m 400mm				4W/m 400mm	4W/m 400mm	4W/m 400mm									
88/2 SGP Tempered	4W/m 400mm	4W/m 400mm	4W/m 400mm	4W/m 400mm	4W/m 400mm	4W/m 400mm	4W/m 400mm		4W/m 400mm	4W/m 400mm								
19mm Monolithic	4W/m 400mm	4W/m 400mm	4W/m 400mm				4W/m 400mm	4W/m 400mm				4W/m 400mm						
1010/4 PVB Tempered	4W/m 400mm	4W/m 400mm	4W/m 400mm	4W/m 400mm	4W/m 400mm	4W/m 400mm	4W/m 400mm	4W/m 400mm	4W/m 400mm	4W/m 400mm								
1010/4 EVA Tempered	4W/m 400mm	4W/m 400mm	4W/m 400mm	4W/m 400mm	4W/m 400mm	4W/m 400mm	4W/m 400mm	4W/m 400mm	4W/m 400mm	4W/m 400mm	4W/m 400mm							
1010/2 Trosifol ES Tempered	4W/m 400mm	4W/m 400mm	4W/m 400mm	4W/m 400mm	4W/m 400mm	4W/m 400mm	4W/m 400mm	4W/m 400mm	4W/m 400mm	4W/m 400mm	4W/m 400mm							
1010/2DG41 Tempered	4W/m 400mm	4W/m 400mm	4W/m 400mm	4W/m 400mm	4W/m 400mm	4W/m 400mm	4W/m 400mm	4W/m 400mm	4W/m 400mm	4W/m 400mm	4W/m 400mm	4W/m 400mm	4W/m 400mm					
1010/2 SGP Tempered	4W/m 400mm	4W/m 400mm	4W/m 400mm	4W/m 400mm	4W/m 400mm	4W/m 400mm	4W/m 400mm	4W/m 400mm	4W/m 400mm	4W/m 400mm	4W/m 400mm	4W/m 400mm	4W/m 400mm					
1212/2 SGP Tempered	4W/m 400mm			4W/m 200mm	4W/m 200mm	4W/m 200mm			4W/m 400mm	4W/m 400mm	4W/m 200mm			4W/m 200mm	4W/m 200mm			
1212/1 SGP Tempered			8W/m 400mm double fixing						8W/m 400mm double fixing					8W/m 400mm double fixing		8W/m 200mm	8W/m 200mm	

LEGEND

SABCO ORIGINAL

4W/m
400mm SABCO ORIGINAL
Under British Standard

4W/m
400mm SABCO ORIGINAL
BS Rated satisfactory

SABCO EVO

4W/m
400mm SABCO EVO
Under British Standard

4W/m
400mm SABCO EVO
BS Rated satisfactory

SABCO x

8W/m
200mm SABCO X
Under British Standard

4 W/m = 4 Wedges / meter
400mm = Profile fixing suitable every 400 mm.

PERFORMANCE & LOADS

BELGIUM APPROVED



BELGIUM STANDARD
NBN B03-004

	PRIVATE			PUBLIC			STADIUM
Static load	0,5kN/ml - 1kN			1kN/ml - 1kN			Royal decree KB3kN/ml + 20%
Dynamic load	150J			225J - 350J			150J - 225J - 350J
SABCO	SABCO ORIGINAL			SABCO EVO			SABCO ORIGINAL
GLASS	PROFIL FLOOR 7010	LATERAL 7011 BUILD-IN-SLAP 7012	FLOOR 7030	FLOOR 7010	LATERAL 7011 BUILD-IN-SLAP 7012	FLOOR 7010	
66/2 DG41 Heat-strengthened			4W/m 400 mm Wind class 0				
88/2 DG41 Heat-strengthened	4W/m 400 mm Wind class 0		4W/m 400 mm Wind class 2				
1010/2 DG41 Float	4W/m 400 mm Wind class 2		4W/m 400 mm Wind class 2	4W/m 400 mm Wind class 2			
1010/2 DG41 Heat-strengthened	4W/m 400 mm Wind class 7	4W/m 400 mm Wind class 6	4W/m 400 mm Wind class 2	4W/m 400 mm Wind class 7	4W/m 400 mm Wind class 6	4W/m 200 mm	
1212/2 DG41 Heat-strengthened	4W/m 400 mm Wind class 7	4W/m 400 mm Wind class 6	4W/m 400 mm Wind class 2	4W/m 400 mm Wind class 7	4W/m 400 mm Wind class 6	4W/m 200 mm	

Reference speed	vb,0 (m/s)	Wind exposure class 1				Wind exposure class 2				Wind exposure class 3			
		26	25	24	23	26	25	24	23	26	25	24	23
Roughness categories land		Reference heights up (ze)				Reference heights up (ze)				Reference heights up (ze)			
Coastal area	0												
Countryside	I									2m	2m	4m	5m
Rugged landscape	II			2m	3m	3m	3m	4m	6m	5m	6m	8m	11m
Industrial area - forest	III	5m	6m	7m	9m	9m	12m	15m	19m	15m	19m	5m	21m
City	IV	15m	17m	21m	25m	25m	30m	30m	30m	30m	30m	30m	30m
Max.dynamic pressure	qp(ze)=	544 Pa				693 Pa				815 Pa			

Reference speed	vb,0 (m/s)	Wind exposure class 4				Wind exposure class 5				Wind exposure class 6			
		26	25	24	23	26	25	24	23	26	25	24	23
Roughness categories land		Reference heights up (ze)				Reference heights up (ze)				Reference heights up (ze)			
Coastal area	0	3m				5m				8m			
Countryside	I	4m	5m	8m	11m	7m	10m	14m	22m	12m	14m	27m	42m
Rugged landscape	II	8m	11m	15m	16m	14m	16m	16m	22m	16m	16m	27m	42m
Industrial area - forest	III	21m	21m	21m	21m	21m	21m	21m	22m	21m	21m	27m	42m
City	IV	30m	30m	30m	30m	30m	30m	30m	30m	30m	30m	30m	42m
Max.dynamic pressure	qp(ze)=	950 Pa				1086 Pa				1224 Pa			

Reference speed	vb,0 (m/s)	Wind exposure class 7			
		26	25	24	23
Roughness categories land		Reference heights up (ze)			
Coastal area	0	15m			
Countryside	I	21m	31m	48m	78m
Rugged landscape	II	21m	31m	48m	78m
Industrial area - forest	III	21m	31m	48m	78m
City	IV	30m	31m	48m	78m
Max.dynamic pressure	qp(ze)=	1364 Pa			

LEGEND

SABCO ORIGINAL

4W/m SABCO ORIGINAL
400mm UnderBelgiumstandard

4W/m SABCO ORIGINAL
400mm Belgique standard Rated satisfactory

4 W/m = 4 Wedges / meter
400mm = Profile fixing suitable every 400 mm.

SABCO EVO

4W/m SABCO EVO
400mm UnderBelgiumstandard

4W/m SABCO EVO
400mm British standard Rated satisfactory

PERFORMANCE & LOADS

SWITZERLAND APPROVED



SWISS STANDARD
SIA 261 / SIA 260
SIGaB

	0,8kN/ml			1,6kN/ml		
Static load	900J			900J		
Dynamic load	900J			900J		
SABCO	SABCO ORIGINAL			SABCO ORIGINAL		
GLASS	PROFIL FLOOR 7010	BUILD-IN-SLAP 7012	LATERAL 7011	LATERAL OFFSET FIXING 7013	FLOOR 7010	LATERAL 7011 BUILD-IN-SLAP 7012 FIXING
1010/2 PVB TVG Heat-strengthened	4W/m 400mm	4W/m 200mm	4W/m 400mm			
1010/2 EVA TVG Heat-strengthened	4W/m 400mm	4W/m 200mm	4W/m 400mm			
1010/2 DG41 TVG Heat-strengthened	4W/m 400mm	4W/m 200mm	4W/m 400mm			
1010/2 Trosifol ES TVG Heat-strengthened	4W/m 400mm	4W/m 200mm	4W/m 400mm			
1010/2 SGP TVG Heat-strengthened	4W/m 400mm	4W/m 200mm	4W/m 400mm			
1010/2 PVB ESG Tempered	4W/m 400mm	4W/m 200mm	4W/m 400mm	4W/m 200mm	4W/m 200mm	4W/m 200mm
1010/2 EVA ESG Tempered	4W/m 400mm	4W/m 200mm	4W/m 400mm	4W/m 200mm	4W/m 200mm	4W/m 200mm
1010/2 DG41 ESG Tempered	4W/m 400mm	4W/m 200mm	4W/m 400mm	4W/m 200mm	4W/m 200mm	4W/m 200mm
1010/2 Trosifol ES ESG Tempered	4W/m 400mm	4W/m 200mm	4W/m 400mm	4W/m 200mm	4W/m 200mm	4W/m 200mm
1010/2 SGP ESG Tempered	4W/m 400mm	4W/m 200mm	4W/m 400mm	4W/m 200mm	4W/m 200mm	4W/m 200mm
1212/2 PVB TVG Heat-strengthened	4W/m 400mm	4W/m 200mm	4W/m 400mm			
1212/2 EVA TVG Heat-strengthened	4W/m 400mm	4W/m 200mm	4W/m 400mm			
1212/2 DG41 TVG Heat-strengthened	4W/m 400mm	4W/m 200mm	4W/m 400mm			
1212/2 Trosifol ES TVG Heat-strengthened	4W/m 400mm	4W/m 200mm	4W/m 400mm			
1212/2 SGP TVG Heat-strengthened	4W/m 400mm	4W/m 200mm	4W/m 400mm			
1212/2 PVB ESG Trempe thermique	4W/m 400mm	4W/m 200mm	4W/m 400mm	4W/m 200mm	4W/m 200mm	4W/m 200mm
1212/2 EVA ESG Tempered	4W/m 400mm	4W/m 200mm	4W/m 400mm	4W/m 200mm	4W/m 200mm	4W/m 200mm
1212/2 DG41 ESG Tempered	4W/m 400mm	4W/m 200mm	4W/m 400mm	4W/m 200mm	4W/m 200mm	4W/m 200mm
1212/2 Trosifol ES ESG Tempered	4W/m 400mm	4W/m 200mm	4W/m 400mm	4W/m 200mm	4W/m 200mm	4W/m 200mm
1212/2 SGP ESG Tempered	4W/m 400mm	4W/m 200mm	4W/m 400mm	4W/m 200mm	4W/m 200mm	4W/m 200mm

LEGEND

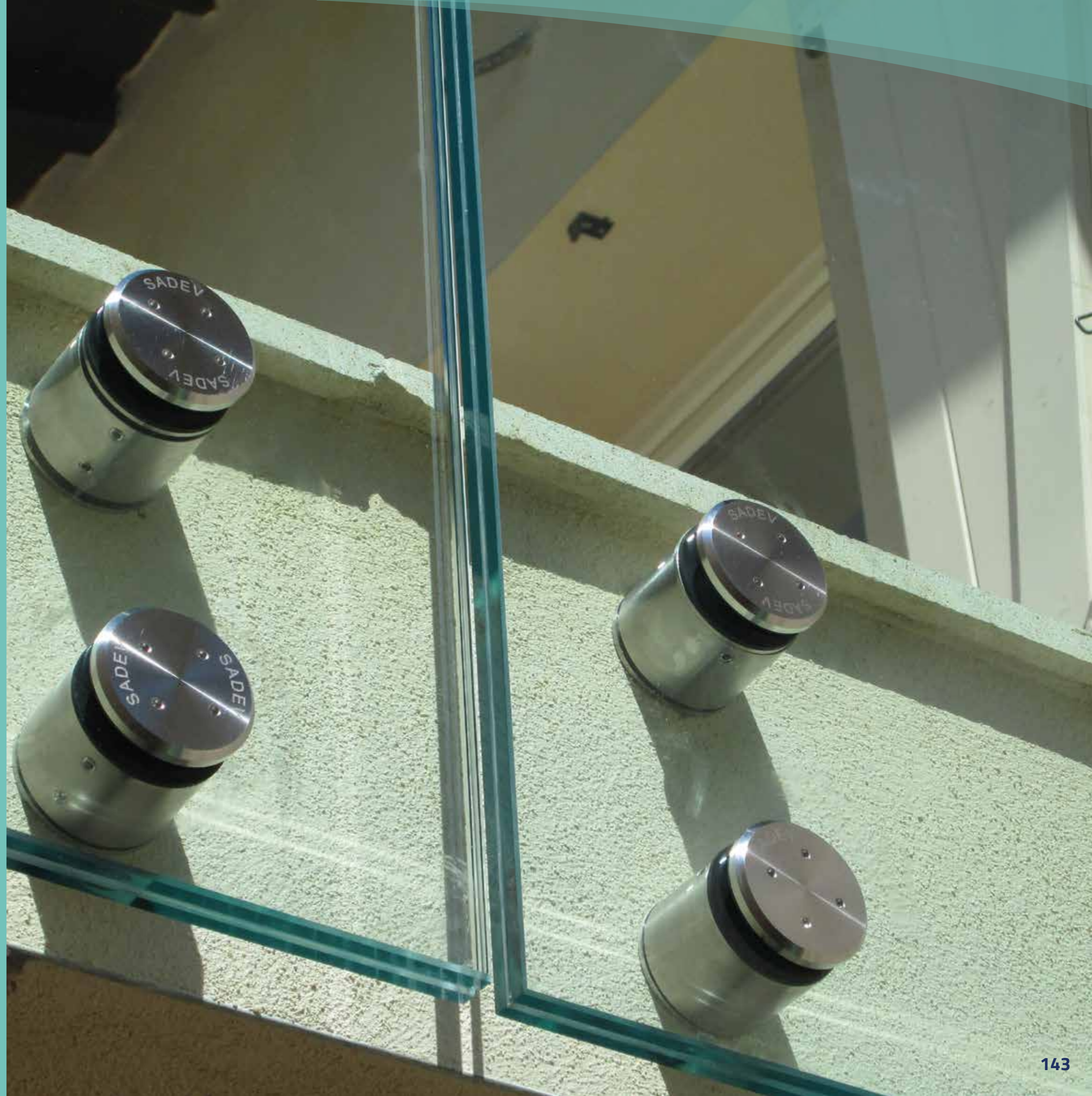
SABCO ORIGINAL

4W/m SABCO ORIGINAL
400mm Under Swiss Standard

4W/m SABCO ORIGINAL
400mm Swiss standard Rated satisfactory

4 W/m = 4 Wedges / meter
400mm = Profile fixing suitable every 400 mm.

PART 2
**OTHER RAILING
SYSTEMS**



WALL POINT FIXINGS

ADJUSTABLE

SLAB NOSING RAILING \varnothing 50mm H40

VALIDATED
PERFORMANCE
PUBLIC INSTALLATION
Avis Technique from AGC n° 2/15-1670.



VALIDATED
GLASS PANEL

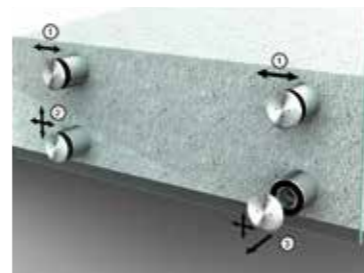
Height : 1 260 mm
Length : 1 000 to 1 400 mm



ADJUSTMENTS

POSSIBLE

Multiple adjustment possible :
horizontal, vertical, depth.



FAST INSTALLATION LESS OPERATION

Very fast system.

STAINLESS STEEL 304

Glass : 12 > 25,52 mm
Ref : 000110

Glass : 25,52 > 31,52 mm
Ref : 000110-31

STAINLESS STEEL 316

Glass : 12 > 25,52 mm
Ref : 000110A4

Glass : 25,52 > 31,52 mm
Ref : 000110-31A4

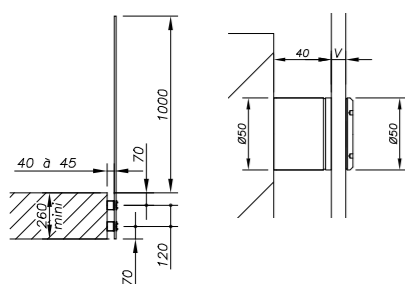
BLACK FINISH POSSIBLE IN 304



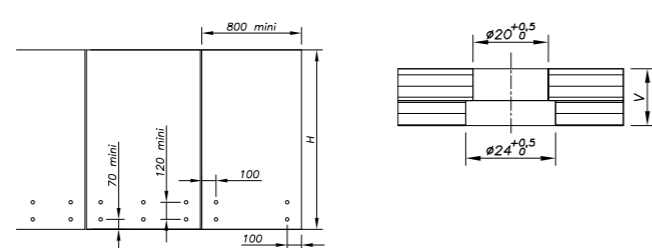
Glass : 12 > 25,52 mm
Ref : 000110N

*Other glass
thickness
upon
request.*

SIZE



DRILLING PLAN



WITHOUT ADJUSTMENT

SLAB NOSING RAILING \varnothing 50mm H30



STAINLESS STEEL 304
Glass : 17,52 > 21,52 mm
Ref : 000130

STAINLESS STEEL 316
Glass : 22 > 25,52 mm
Ref : 000130A4

WITHOUT ADJUSTMENT

SLAB NOSING RAILING \varnothing 50mm H20



BLACK FINISH POSSIBLE IN 304

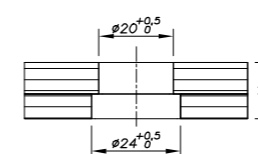
Glass : 17,52 > 21,52 mm
Ref : 000120N

STAINLESS STEEL 304
Glass : 17,52 > 21,52 mm
Ref : 000120

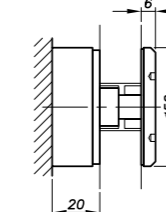
Glass : 22 > 25,52 mm
Ref : 000120-25

STAINLESS STEEL 316
Glass : 17,52 > 21,52 mm
Ref : 000120A4

DRILLING PLAN



SIZE



Slab nose railing available without branding on request

WALL POINT FIXINGS

PERFORMANCE

EXTRACT FROM THE FRENCH Avis Technique AGC n° 2/15-1670

SLAB NOSING RAILING \varnothing 50mm H40

PVB DG 41 INTERLAYER

Usages	0.6 to 1.8 kN	1.0 to 3 kN	1.7 to 5.1 kN
NFP 06-001	RENTAL HOUSING	PUBLIC AREAS	STADIUM STANDS
Features according NF EN 1991-1 and 1991-2 and NF P06-111-2/A1	A and B	C1 to C4 D	-
Composition	10.10 / 12.12 / 15.15	10.10 / 12.12 / 15.15	10.10 / 12.12 / 15.15
Minimal size (mm)	500 / 500 / 900	500 / 500 / 900	1 100 / 500 / 900

SENTRY GLASS INTERLAYERS

Usages	0.6 to 1.8 kN	1.0 to 3 kN	1.7 to 5.1 kN
NFP 06-001	RENTAL HOUSING	PUBLIC AREAS	STADIUM STANDS
Features according NF EN 1991-1 and 1991-2 and NF P06-111-2/A1	A and B	C1 to C4 D	-
Composition	10.10 / 12.12 / 15.15	10.10 / 12.12 / 15.15	10.10 / 12.12 / 15.15
Minimal size (mm)	1 100 / 800 / 500	1 100 / 800 / 500	1 100 / 500 / 900



POST WITH FIN MONTI

APPROVED PERFORMANCE PUBLIC INSTALLATION

French Test Reports (CEBTP) available



APPROVED GLASS PANEL

1 000 mm and 1 200 mm : thickness 6.6
1 400 mm : thickness 8.8



ADJUSTMENTS POSSIBLE

For glass alignment.

QUICK INSTALLATION

EASY TO INSTALL

Very fast system.

PART 1

FLAT POST 60 x 15 mm

STEEL READY TO PAINT

Ref : 006015P1AC

STAINLESS STEEL 304

Ref : 006015P1A2

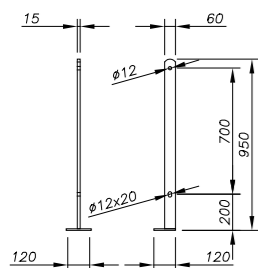
STAINLESS STEEL 316

Ref : 006015P1A4

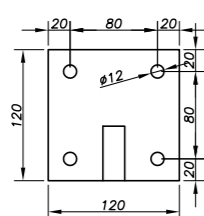


Other glass thickness upon request.

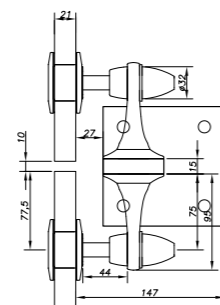
SIZE



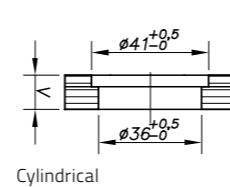
DRILLING PLAN



SIZE



DRILLING PLAN



Other glass thickness upon request.

STAINLESS STEEL 304

Glass : 8 > 12 mm
Ref : 0224FM2-V2005-12*

Glass : 12 > 17.5 mm
Ref : 0224FM2-V2005-17*

Glass : 19 > 22 mm
Ref : 0224FM2-V2005-21*

*A4 for stainless 316

FOR FIN MONTI

SIMPLE GLASS FIN APPLICATION



STAINLESS STEEL 304

Glass : 8 > 12 mm
Ref : 0224FM1-V2005-12V*

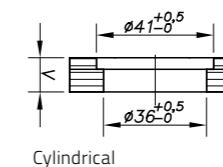
Glass : 12 > 17.5 mm
Ref : 0224FM1-V2005-17V*

Glass : 19 > 22 mm
Ref : 0224FM1-V2005-21V*

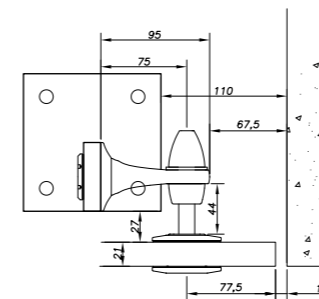
Other glass thickness upon request.

*A4 for stainless 316

DRILLING PLAN



SIZE



FOR FIN MONTI

SIMPLE WALL FIN APPLICATION



STAINLESS STEEL 304

Glass : 8 > 12 mm
Ref : 0224FM1-V2005-12P*

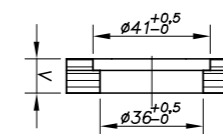
Glass : 12 > 17.5 mm
Ref : 0224FM1-V2005-17P*

Glass : 19 > 22 mm
Ref : 0224FM1-V2005-21P*

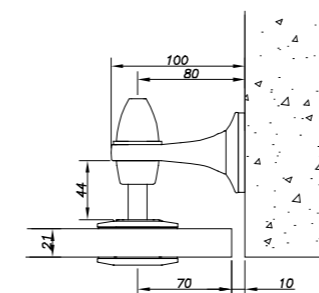
Other glass thickness upon request.

*A4 for stainless 316

DRILLING PLAN



SIZE



POST WITH FLAT GLASS CONNECTORS

APPROVED PERFORMANCE PUBLIC INSTALLATION

French Test Reports (CEBTP) available



APPROVED GLASS PANEL

1 000 mm to 1 500 mm : thickness 8.8

ADJUSTMENTS POSSIBLE

Horizontal adjustment.

PRICE/PERFORMANCE RATIO

Economical System with the Ability to Adjust the Glass.

QUICK INSTALLATION EASY TO INSTALL

Very fast system.



PART 1

FLAT POST 50 x 20 mm

STEEL READY TO PAINT

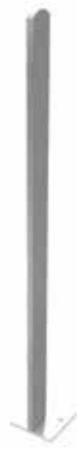
Ref : 006020P1AC

STAINLESS STEEL 304

Ref : 006020P1A2

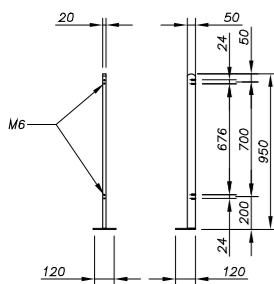
STAINLESS STEEL 316

Ref : 006020P1A4

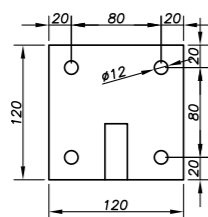


Other glass thickness upon request.

SIZE



DRILLING PLAN



PART 2

POST DOUBLE FLAT CONNECTOR

STAINLESS STEEL 304

Glass : 13.52 > 17.52 mm
Ref : 022820GDC2062430*

Glass : 19 > 21.52 mm
Ref : 022820GDC2062434*

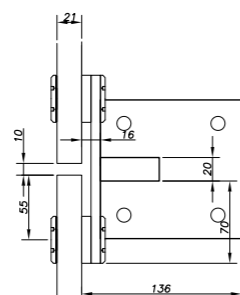
Glass : 21.52 > 25.52 mm
Ref : 022820GDC2062438*

*A4 for stainless 316

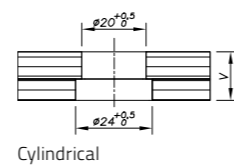


Other glass thickness upon request.

SIZE



DRILLING PLAN



FOR FLAT CONNECTOR

GLASS POST SIMPLE FLAT CONNECTOR

STAINLESS STEEL 304

Glass : 13.52 > 17.52 mm
Ref : 022820GDC1062430*

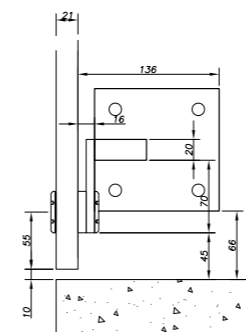
Glass : 19 > 21.52 mm
Ref : 022820GDC1062434*

Glass : 21.52 > 25.52 mm
Ref : 022820GDC1062438*

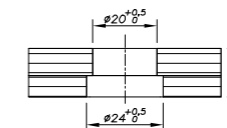
*A4 for stainless 316

Other glass thickness upon request.

SIZE



DRILLING PLAN



Cylindrical

FOR FLAT CONNECTOR

WALL SIMPLE FLAT CONNECTOR

STAINLESS STEEL 304

Glass : 13.52 > 17.52 mm
Ref : 022821062430*

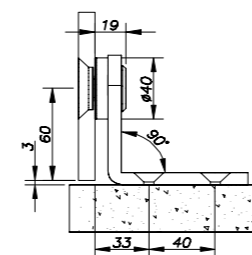
Glass : 19 > 21.52 mm
Ref : 022821062434*

Glass : 21.52 > 25.52 mm
Ref : 022821062438*

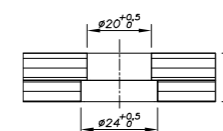
*A4 for stainless 316

Other glass thickness upon request.

SIZE



DRILLING PLAN



SHARK FIN POST

APPROVED PERFORMANCE
PUBLIC INSTALLATION

French Test Reports (CEBTP) available



APPROVED GLASS PANEL

1 000 mm to 1 400 mm : thickness 10.10 / 4

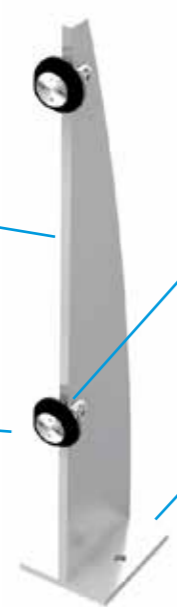
ADJUSTMENTS POSSIBLE

Multiple adjustment possibilities : horizontal, vertical, depth.

QUICK INSTALLATION EASY TO INSTALL



Very fast system.



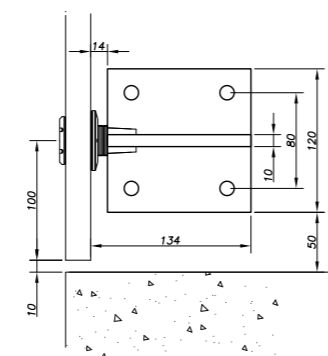
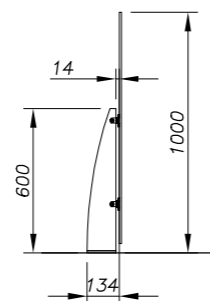
SHARK FIN POST

FLAT POST 50 x 20 mm

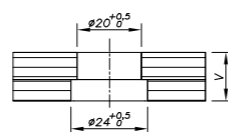
Material	Glass thickness	Reference
Steel ready to paint		0012010062426AC
Stainless Steel 304	10 > 13,52 mm	0012010062
Stainless Steel 316		0012010062426A4
Steel ready to paint		0012010062426AC
Stainless Steel 304	14 > 15,52 mm	0012010062426
Stainless Steel 316		0012010062426A4
Steel ready to paint		0012010062428AC
Stainless Steel 304	16 > 17,52 mm	0012010062428
Stainless Steel 316		0012010062428A4
Steel ready to paint		0012010062432AC
Stainless Steel 304	18 > 21,52 mm	0012010062432
Stainless Steel 316		0012010062432A4
Steel ready to paint		0012010062434AC
Stainless Steel 304	21,52 mm	0012010062434
Stainless Steel 316		0012010062434A4

Other glass thickness upon request.

SIZE



DRILLING PLAN



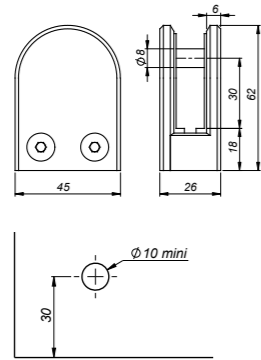
GLASS CLAMPS

3 MODELS OF CLAMPS


CLAMP 62 x 45 mm



SIZE



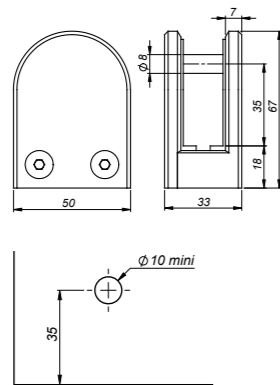
Glass thickness	Adaptor	Reference
8 > 12 mm	Without adaptor	00086245-0812
	Adaptor \varnothing 25 mm	00086245-0812-025
	Adaptor \varnothing 42,4 mm	00086245-0812-424
	Adaptor \varnothing 48,3 mm	00086245-0812-483

Available for installation on flat or tubular support. 
Other glass thickness upon request.


CLAMP 67 x 50 mm



SIZE



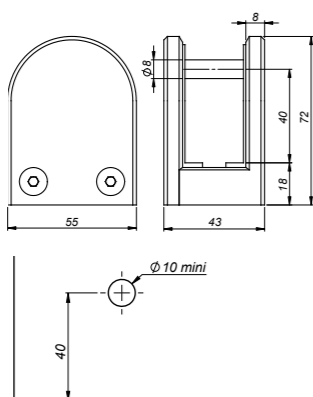
Glass thickness	Adaptor	Reference
13,52 > 17,52 mm	Without adaptor	00086750-1218
	Adaptor \varnothing 42,4 mm	00086750-1218-424
	Adaptor \varnothing 48,3 mm	00086750-1218-483

Available for installation on flat or tubular support. 
Other glass thickness upon request.


CLAMP 72 x 55 mm



SIZE



Glass thickness	Adaptor	Reference
21,52 > 25,52 mm	Without adaptor	00087255-2126
	Adaptor \varnothing 42,4 mm	00087255-2126-424
	Adaptor \varnothing 48,3 mm	00087255-2126-483

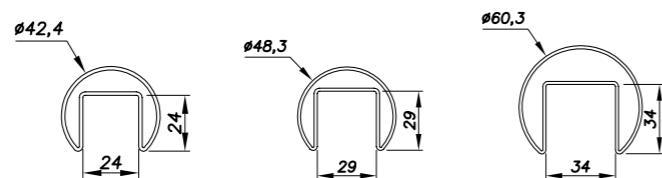
Available for installation on flat or tubular support. 
Other glass thickness upon request.



ACCESSORIES

HANDRAILS ON GLASS

PROFILE - TUBE WITH SLOT FOR GLASS 5m



Diameter	Material	Reference
42,4 mm	Stainless Steel 304	00 10 20 42 500
	Stainless Steel 316	00 10 20 42 500 A4
48,3 mm	Stainless Steel 304	00 10 20 48 500
	Stainless Steel 316	00 10 20 48 500 A4
60,3 mm	Stainless Steel 304	00 10 20 60 500
	Stainless Steel 316	00 10 20 60 500 A4

EPDM SEALS



Diameter	Glass thickness	Reference
42,4 mm	10 > 13,5 mm	00 10 24 10 135
	15 > 17,5 mm	00 10 24 15 175
	19 > 21,5 mm	00 10 24 19 215
48,3 mm	10 > 13,5 mm	00 10 29 10 135
	15 > 17,5 mm	00 10 29 15 175
	19 > 21,5 mm	00 10 29 19 215
60,3 mm	21,5 > 25,5 mm	00 10 29 21 255
	15 > 17,5 mm	00 10 34 15 175
60,3 mm	19 > 21,5 mm	00 10 34 19 215
	19 > 25,5 mm	00 10 34 21 255

CAPS



Diameter	Material	Reference
42 mm	Stainless Steel 304	00 10 20 42 10
	Stainless Steel 316	00 10 20 42 10 A4
48 mm	Stainless Steel 304	00 10 20 48 10
	Stainless Steel 316	00 10 20 48 10 A4
60 mm	Stainless Steel 304	00 10 20 60 10
	Stainless Steel 316	00 10 20 60 10 A4

CONNECTORS 90°



Diameter	Material	Reference
42 mm	Stainless Steel 304	00 10 20 42 29
	Stainless Steel 316	00 10 20 42 29 A4
48 mm	Stainless Steel 304	00 10 20 48 29
	Stainless Steel 316	00 10 20 48 29 A4
60 mm	Stainless Steel 304	00 10 20 60 29
	Stainless Steel 316	00 10 20 60 29 A4

CONNECTORS 180°



Diameter	Material	Reference
42 mm	Stainless Steel 304	00 10 20 42 20
	Stainless Steel 316	00 10 20 42 20 A4
48 mm	Stainless Steel 304	00 10 20 48 20
	Stainless Steel 316	00 10 20 48 20 A4
60 mm	Stainless Steel 304	00 10 20 60 20
	Stainless Steel 316	00 10 20 60 20 A4

ALUMINUM U CAP RAIL



Glass Thickness	Length	Reference
8.8	2 500 mm	00 10 201 908 250
8.8	5 000 mm	00 10 201 908 500
10.10	2 500 mm	00 10 202 308 250
10.10	5 000 mm	00 10 202 308 500
12.12	2 500 mm	00 10 202 708 250

ANODIZED ALUMINUM
Code : 01

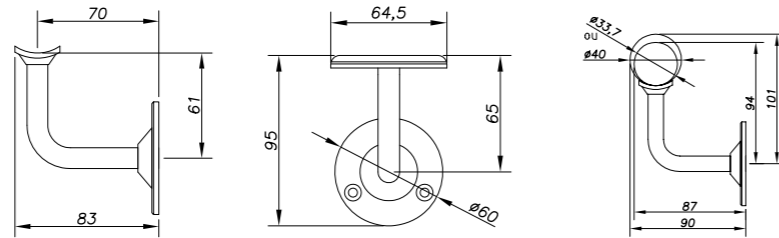
BRUSH EFFECT ALUMINUM
Code : 02

RAL
Code : 03

HANDRAIL BRACKETS

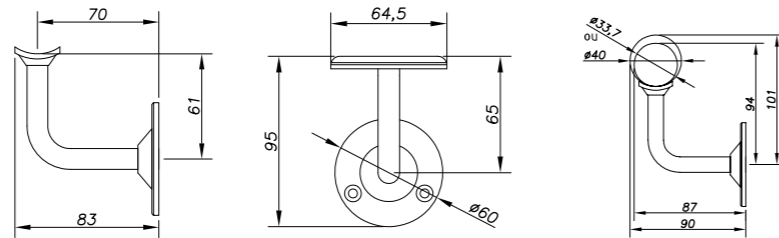
Handrails and railing accessories to complete your project (stairs, banisters, etc). There are different solutions to suit your style and project.

FIXED HANDRAIL BRACKET



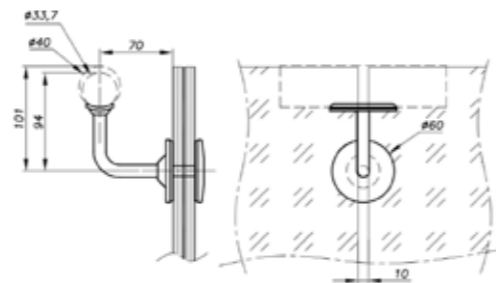
Material	Reference
Stainless Steel 304	00101000
Stainless Steel 316	00101000A4

ADJUSTABLE HANDRAIL BRACKET



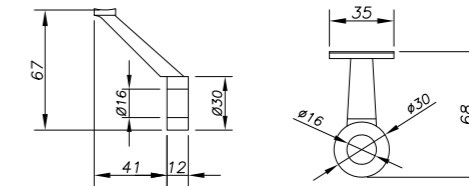
Material	Reference
Stainless Steel 304	00101500

CLAMPED HANDRAIL SUPPORT



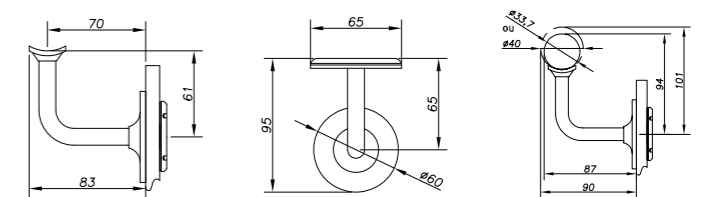
Glass thickness	Reference
12 > 17,5 mm	00101030-1218
18 > 25,5 mm	00101030-1926

HAND RAIL BRACKET ON GLASS



Drilling Plan	Glass thickness	Reference
 Countersunk	10 > 10,5 mm	00 10 20 06 11 16
	16 > 19,5 mm	00 10 20 06 11 20
	20 > 21,5 mm	00 10 20 06 11 24
 Cylindrical	10 > 10,5 mm	00 10 20 06 24 24
	16 > 19,5 mm	00 10 20 06 24 32
	20 > 21,5 mm	00 10 20 06 24 36

HAND RAIL BRACKET ON GLASS



Drilling Plan	Glass thickness	Reference
 Countersunk	11,5 > 13,5 mm	00 10 10 06 11 10 04
	14 > 15,5 mm	00 10 10 06 11 10 06
	16 > 17,5 mm	00 10 10 06 11 10
	18 > 19,5 mm	00 10 10 06 11 12
	20 mm	00 10 10 06 11 14
 Cylindrical	10 > 12 mm	00 10 10 06 24 12
	13 > 15,5 mm	00 10 10 06 24 14
	16 > 17,5 mm	00 10 10 06 24 20
	18 > 19,5 mm	00 10 10 06 24 22
	20 mm	00 10 10 06 24 24

FIXED HANDRAILS

STAINLESS STEEL PIPE Ø 33,7 MM



STAINLESS STEEL 304

Standard length	Reference
2 000 mm	00 10 30 33 200
4 000 mm	00 10 30 33 400
6 000 mm	00 10 30 33 600

STAINLESS STEEL 316

Standard length	Reference
2 000 mm	00 10 30 33 200 A4
4 000 mm	00 10 30 33 400 A4
6 000 mm	00 10 30 33 600 A4

STAINLESS STEEL PIPE Ø 42,4 MM



STAINLESS STEEL 304

Standard length	Reference
2 000 mm	00 10 30 42 200
4 000 mm	00 10 30 42 400
6 000 mm	00 10 30 42 600

STAINLESS STEEL 316

Standard length	Reference
2 000 mm	00 10 30 42 200 A4
4 000 mm	00 10 30 42 400 A4
6 000 mm	00 10 30 42 600 A4

STAINLESS STEEL PIPE Ø 48,3 MM



STAINLESS STEEL 304

Standard length	Reference
2 000 mm	00 10 30 48 200
4 000 mm	00 10 30 48 400
6 000 mm	00 10 30 48 600 A4

STAINLESS STEEL 316

Standard length	Reference
2 000 mm	00 10 30 48 200 A4
4 000 mm	00 10 30 48 400 A4
6 000 mm	00 10 30 48 600 A4

END CAPS



SIZE Ø 33,7

Material	Reference
Stainless Steel 304	00 10 30 33 10
Stainless Steel 316	00 10 30 33 10 A4

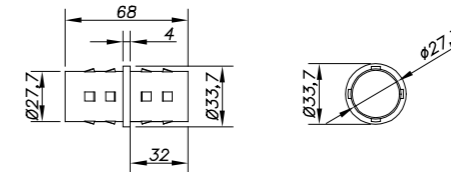
SIZE Ø 42,4

Material	Reference
Stainless Steel 304	00 10 30 42 10
Stainless Steel 316	00 10 30 42 10 A4

SIZE Ø 48,6

Material	Reference
Stainless Steel 304	00 10 30 48 10
Stainless Steel 316	00 10 30 48 10 A4

180° PIPE CONNECTOR



SIZE Ø 33,7

Material	Reference
Stainless Steel 304	00 10 30 33 20
Stainless Steel 316	00 10 30 33 20 A4

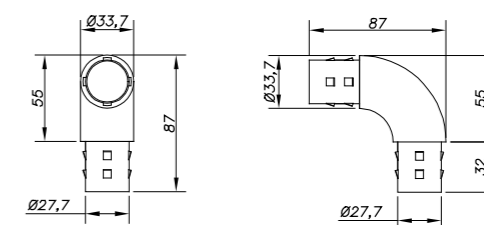
SIZE Ø 42,4

Material	Reference
Stainless Steel 304	00 10 30 42 20
Stainless Steel 316	00 10 30 42 20 A4

SIZE Ø 48,6

Material	Reference
Stainless Steel 304	00 10 30 48 20
Stainless Steel 316	00 10 30 48 20 A4

90° PIPE CONNECTOR



SIZE Ø 33,7

Material	Reference
Stainless Steel 304	00 10 30 33 29
Stainless Steel 316	00 10 30 33 29 A4

SIZE Ø 42,4

Material	Reference
Stainless Steel 304	00 10 30 42 29
Stainless Steel 316	00 10 30 42 29 A4

SIZE Ø 48,6

Material	Reference
Stainless Steel 304	00 10 30 48 29
Stainless Steel 316	00 10 30 48 29 A4



We Build the Invisible

SADEV

Tel. +33(0) 4 50 08 39 00

Fax. +33(0) 4 50 08 39 49 sadev.com

76, chemin des poses - 74330 Poisy (France)

We Build the Invisible

