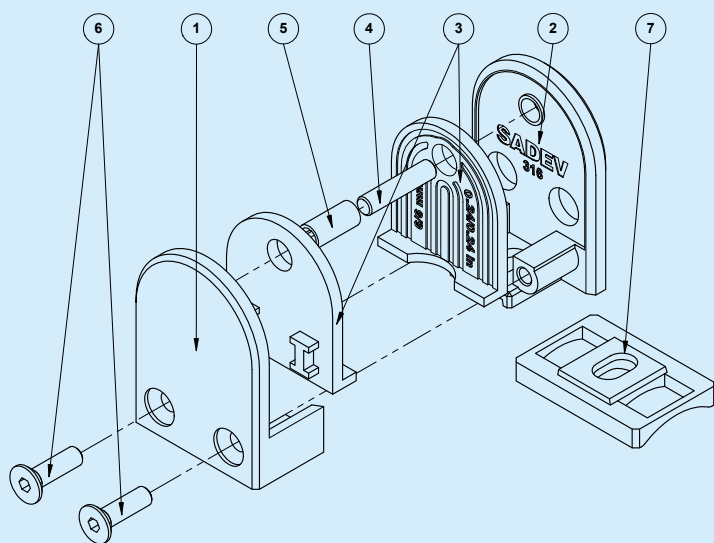


Product description : Glass clamps and adapters

- 3 clamps, 3 adapters, for tubular or flat structures
- Glass thickness from 8 to 25.52 mm
- Stainless steel 316, brushed finish GR 400 - other on request
- Removable pin and grommet - for dead load application
- Replaceable spacer according to glass thickness
- Many applications for fixed glass: railing, shower screen, glass walls, transom, etc.



Components



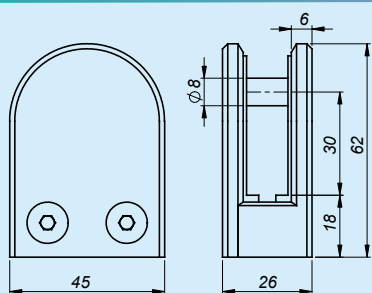
1. Female body
2. Male body
3. Spacer
4. Pin
5. Grommet
6. Countersunk screw head
7. Adapter for tubular structure

62 x 45 mm glass clamp - Glass thickness from 8 to 12 mm

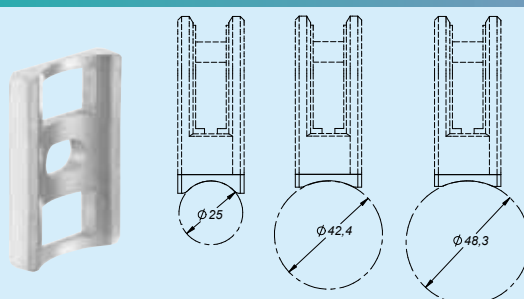


Description	Reference
Clamp size 1, brushed finish GR400	00086245-0812
Clamp size 1, brushed finish GR400 + adapter (tube) Ø 25	00086245-0812-025
Clamp size 1, brushed finish GR400 + adapter (tube) Ø 42.4	00086245-0812-424
Clamp size 1, brushed finish GR400 + adapter (tube) Ø 48.3	00086245-0812-483

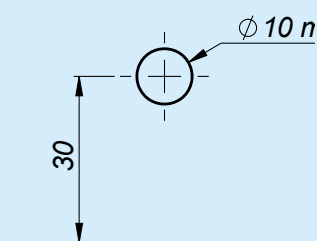
Dimensions



Adapter for tubular structure



Glass drilling (if necessary)

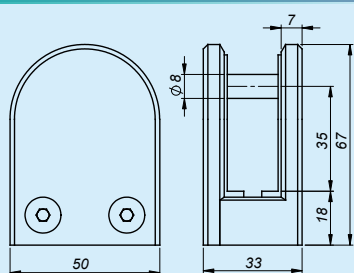


67 x 50 mm glass clamp - Glass thickness from 13.52 to 17.52 mm

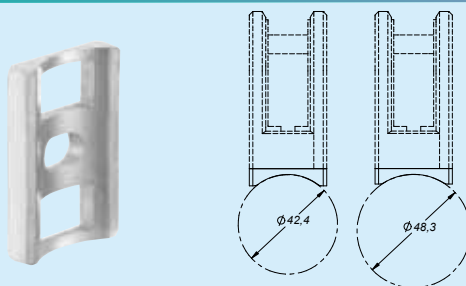


Description	Reference
Clamp size 2, brushed finish GR400	00086750-1218
Clamp size 2, brushed finish GR400 + adapter (tube) Ø 42.4	00086750-1218-424
Clamp size 2, brushed finish GR400 + adapter (tube) Ø 48.3	00086750-1218-483

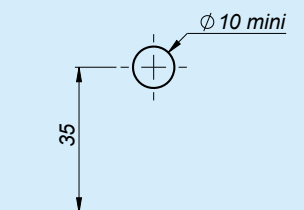
Dimensions



Adaptater for tubular structure



Glass drilling (if necessary)

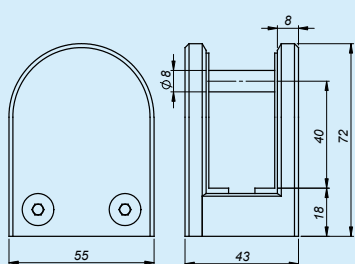


72 x 55 mm glass clamp - Glass thickness from 21.52 to 25.52 mm

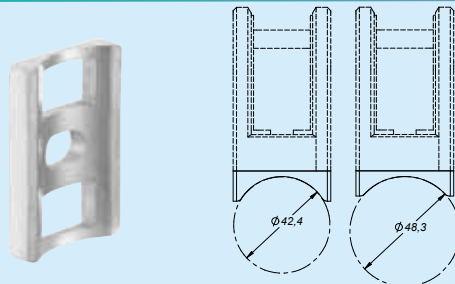


Description	Reference
Clamp size 3, brushed finish GR400	00087255-2126
Clamp size 3, brushed finish GR400 + adapter (tube) Ø 42.4	00087255-2126-424
Clamp size 3, brushed finish GR400 + adapter (tube) Ø 48.3	00087255-2126-483

Dimensions



Adaptater for tubular structure



Glass drilling (if necessary)

