

CLADDING SYSTEM



Cladding system ..... 3.2

# Cladding system

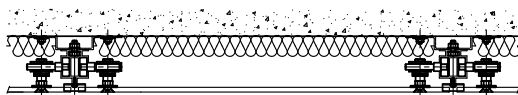
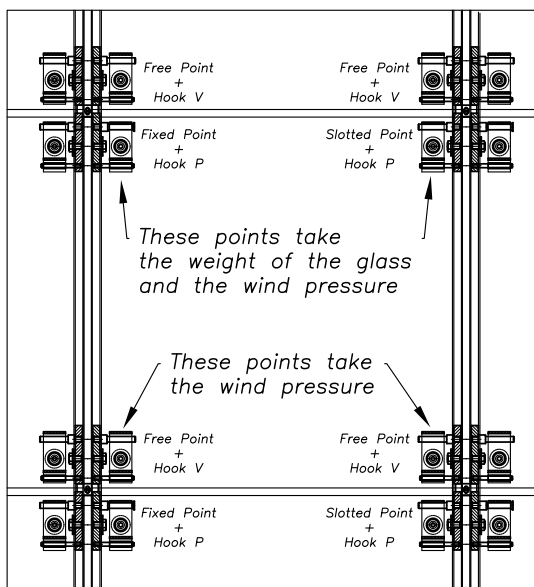
Désignation : exterior glass wall cladding



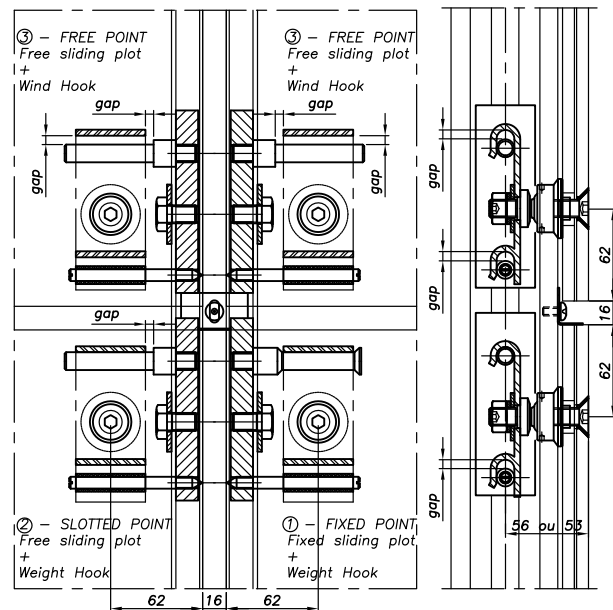
Patent N° 9707408  
Technical assesment available  
on request



## Configuration



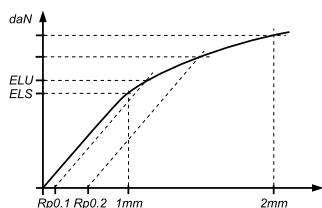
## Detail



## Recommendation

- A complete glass cladding system to enhance the thermal insulation or for use as a rain screen on buildings.
- When used with color or opaque glass it can provide an aesthetic covering on existing worn or outdated surfaces.
- Articulating fitting points for use with laminated glass.
- Fixed points used for monolithic glass.
- The system can support up to 300 kg (660 lbs.) glazing.
- Can be used on sloped applications.
- Ideal for photovoltaic facade applications.
- Installation instructions on request.

## Mechanical performances



SWIVEL FITTINGS				FIXED BOLTS					
M12	SHEAR STRENGTH		PULL OUT CAPACITY		M12	SHEAR STRENGTH		PULL OUT CAPACITY	
	D	TOTAL FAILURE	TOTAL FAILURE	D		TOTAL FAILURE	TOTAL FAILURE		
	30mm	1797 daN* (4039 lb)	1055 daN* (2371 lb)	30mm		4342 daN* (9761 lb)	3399 daN* (7641 lb)		

\* Tensile strength calculation according to EN 1993-1-8 and shear resistance according to EN 1993-1-4

## References

PHOTO	DIMENSIONS	GLASS DRILLING	GLASS THICKNESS	REFERENCE
 Support profile		-	-	VET-PROF-4M Profil en longueur 4m
 Swivel fittings + hook for weight			8.6 8.8 10.8	VET0-R2006-8.6-P VET0-R2006-8.8-P VET0-R2006-10.8-P
 Swivel fittings + wind hook			8.6 8.8 10.8	VET0-R2006-8.6-V VET0-R2006-8.8-V VET0-R2006-10.8-V
 Fixed fastening + hook for weight			8 10 12 15	VET0-VISG-8-P VET0-VISG-10-P VET0-VISG-12-P VET0-VISG-15-P
 Fixed fastening + wind hook			8 10 12 15	VET0-VISG-8-V VET0-VISG-10-V VET0-VISG-12-V VET0-VISG-15-V
 Fixed      Free dilatant		-	-	VET5-FIXE VET5-LD
 Centered bracket Right bracket Left bracket		-	-	VET11-EAS1 VET11-EAS1-D VET11-EAS1-G

