

THE SAFCO SYSTEM



SAFCO 9.2

Safco system components 9.5

Presentation of the components
of the facade provided by Sadev 9.6



SAFCO

SADEV Facade Concept

This turnkey point supported glass facade system can be used either as the first envelop of the building or as a secondary skin in the case of new construction or renovations. The latter case contributes to sustainable development since significant energy savings can be made through a decrease in heat loss and utilization of the greenhouse effect. In addition to energy savings, the SAFCO system provides a smooth exterior glass rain screen to protect the primary structure in areas with heavy annual precipitation. A final added benefit is the creation of an additional acoustical barrier significantly lowering exterior noise pollution.



Advantages :

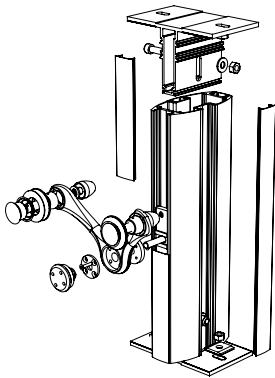
- Turnkey installation of a glass facade as a 1st or 2nd building envelop.
- Pre-engineered point supported glass façade.
- The installation of a SAFCO facade as a double skin offers high-performance thermal and acoustical insulation.
- Increases the energy performance.
- Sunshades integration limits solar radiation and raise of the temperature in the building.
- Safe and efficient System (french technical evaluation document).
- A modern, transparent façade system, that is equally suitable as a primary envelope for new or existing construction.
- Thanks to the standardization of the different elements that compose the SAFCO facade, SADEV is capable of offering you very competitive prices.
- Built in adjustments and installer friendly.



What is it all about exactly ?

It is a simple turnkey solution for the construction of your glass facade.

The system includes aluminum posts as well as the lower and upper brackets to anchor the posts to the building main structure. Depending on your aesthetic and technical criteria, we select the models of hardware, bolts, and spiders that suit your project best. SADEV will then provide the drawings for the facade, material take off, and deliver the entire package ready to install.

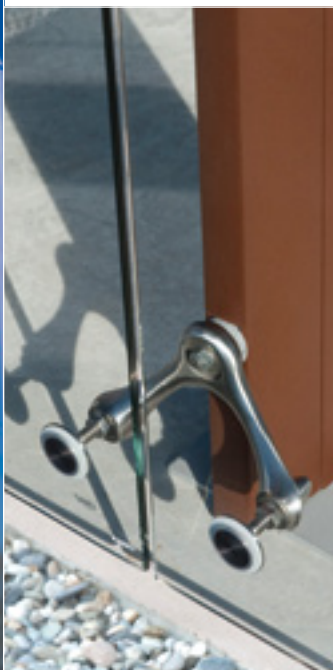
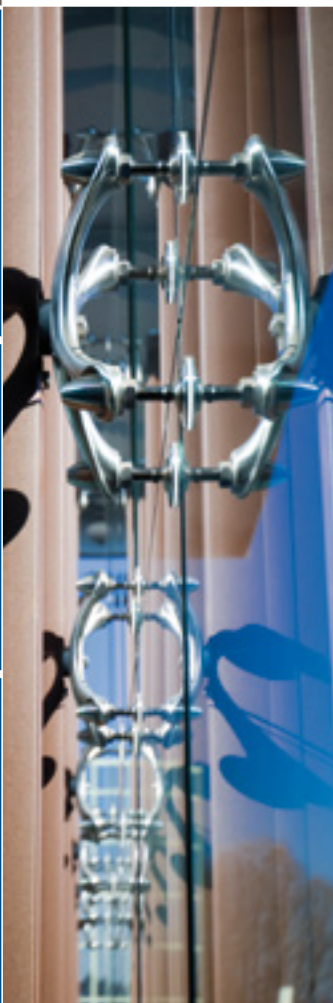


Characteristics :

- Standard height = 6.5m or 21.3 feet (please enquire for taller structures)
- SAFCO can incorporate door openings; the system is also suitable for building angles.
- The standard components of this system are under technical approval delivered by the CSTB*
- The dimensioning of the glass panels are calculated by SADEV in compliance with the criteria of CSTB* specifications n° 3574.
- In addition, the structure and engineering of the SAFCO system glass panels have been the subject of calculations validated by the SOCOTEC inspection bureau (France). For the US, SADEV will design the glass in accordance to local building codes and performance design criteria.
- Tested for guard railing applications.
- The SAFCO components (posts and brackets) are available in stock in raw aluminum. Clear Anodize, RAL powder coat and painted finishes are available on request.

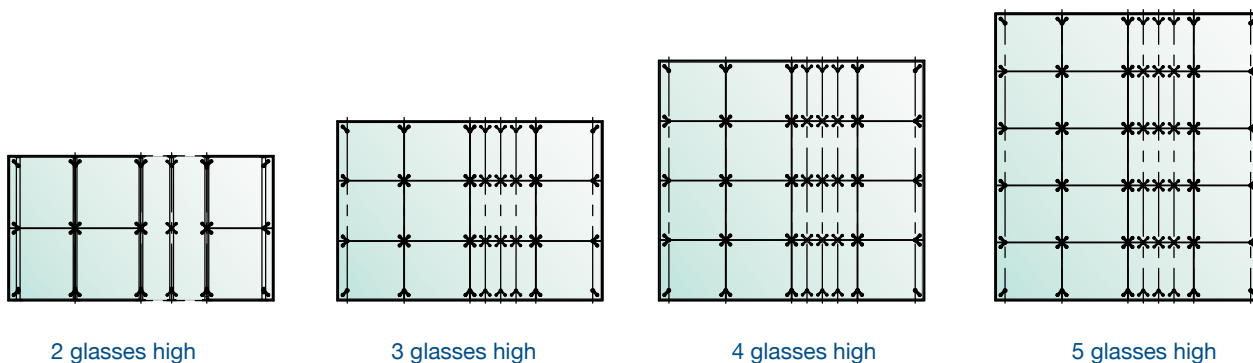
Note : if your choice is made using S3007 spiders, it is possible to have them painted the same color as the posts.

*French testing laboratory



Configuration

Different configurations are available according to the façade height :

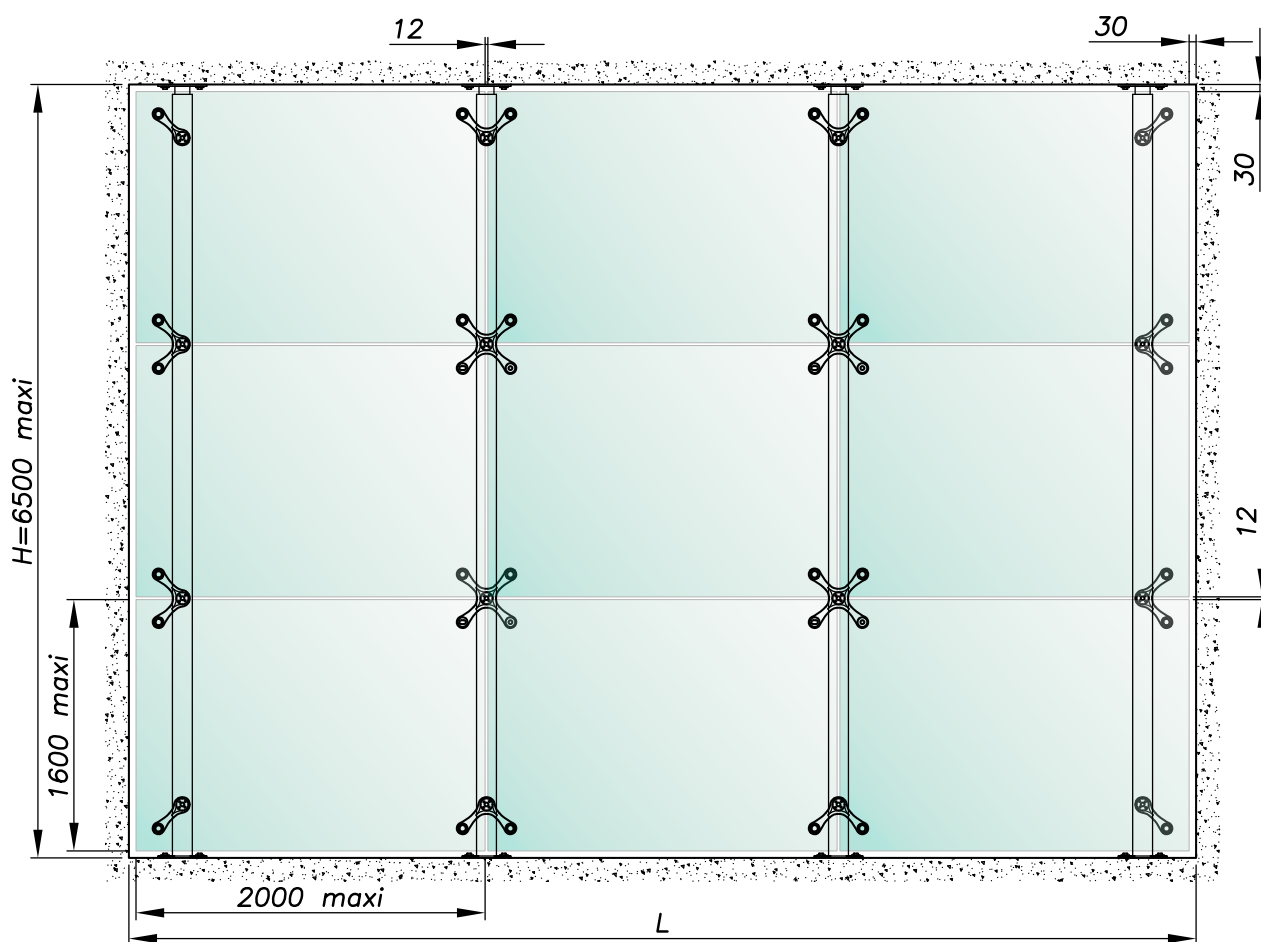


2 glasses high

3 glasses high

4 glasses high

5 glasses high



SADEV provides a pre-engineered turnkey façade solution, ready to install. Calculations valid within the following criteria :

- Maximal wind load = **1000 Pascals**
- Maximum glass height = **1.6 m**
- Maximum glass width = **2 m**
- Maximum façade height = **6.5 m**

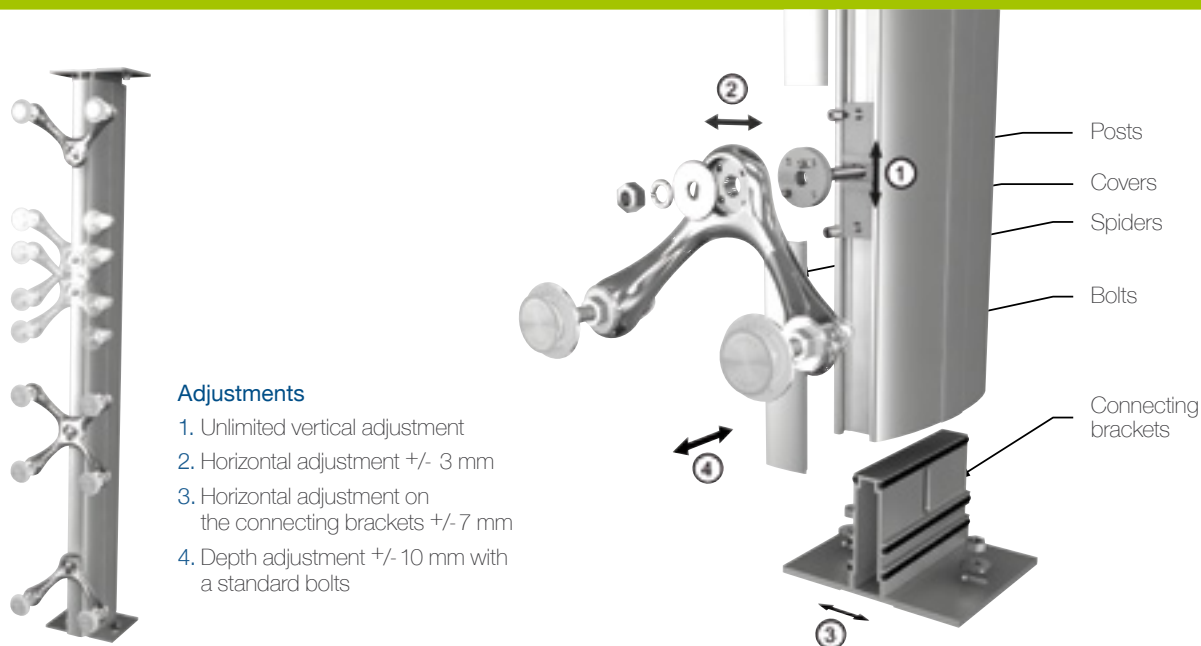
INERTIE POTEAU SAFCO

	JX	230 cm ⁴
	JY	1 690 cm ⁴
	Weight	7,976 kg/m

In case these conditions would not be fulfilled, a design calculation should be carried out. Consult us.

Components of the SAFCO system

Details

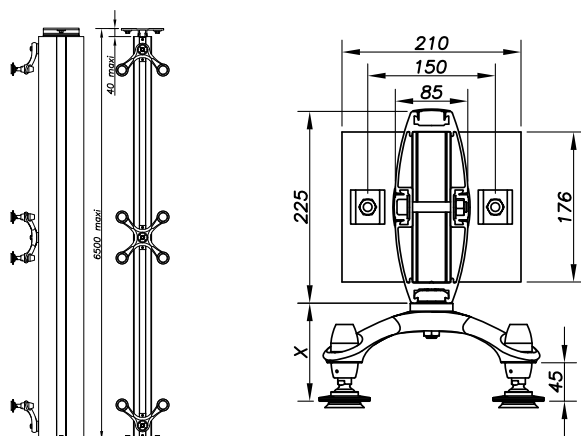


References

DRAWING	REFERENCE	COMMENTS
	SAF-P176-L	$L \leq 7500$
	SAF-CACHE-6500	$L \leq 6500$
	SAF2-DKIT176-BRUT	reference to 2 connecting brackets top and bottom

DRAWING	REFERENCE	COMMENTS
	SAF1-KITFIX-S3000	to S3000 / S3000DU
	SAF1-KITFIX-S3001E	to S3001 EVO
	SAF1-KITFIX-S3007	to S3007
	SAF1-KITFIX-S3002	to S3002
	SAF1-KITFIX-S3000P	to S3000P
	SAF1-KITFIX-S4000P	to S4000P

Dimensions



REFERENCE	X
S3000	115 mm
S3001 EVO	80 mm
S3007	105 mm
S3002	91 mm
S3000P	73 mm
S4000P	63 mm

Presentation of the **facade components** provided by SADEV

The swivel fittings



Parts that are offered here to meet all technical advice CSTB (available on request). All technical information is available in swivel fittings chapter technical catalog CLASSIC.



R1001



R1003



R1006



R1001A



R1039

The spiders



Parts that are offered here to meet all technical advice CSTB (available on request). All technical information is available in spiders chapter technical catalog CLASSIC.



S3000



S3001 EVO



S3007



S3002



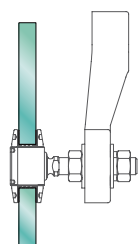
S3000P



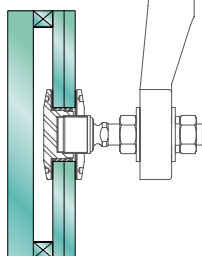
S4000P

Glazing

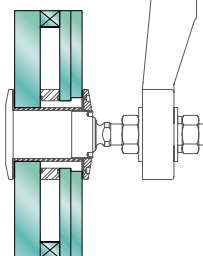
SAFCO is available for glazing.



Monolithic or laminated glass



Insulating glass



Insulating glass

Sealing strip

To be placed between the panes of glass or between wall and glass. They provide waterproofing, thermal and acoustic insulation.



Custom-built configuration

1&2 Corner post

4 External gangway

3 Strut

5 Safety rail (tension rods)

