

R 1006 TSSA

Designation: swivel fitting, Ø 60 mm,
for UV bonding to glass.



REFERENCE TO ORDER			
GLASS THICKNESS	Ø AXIS	LENGTH AXIS (mm)	ARTICLE CODE
	M14	65	R1006TSSA-1465*
	SPECIAL	SPECIAL	R1006TSSA-SP

* R1006TSSA-1465 : Model - type axis and length.

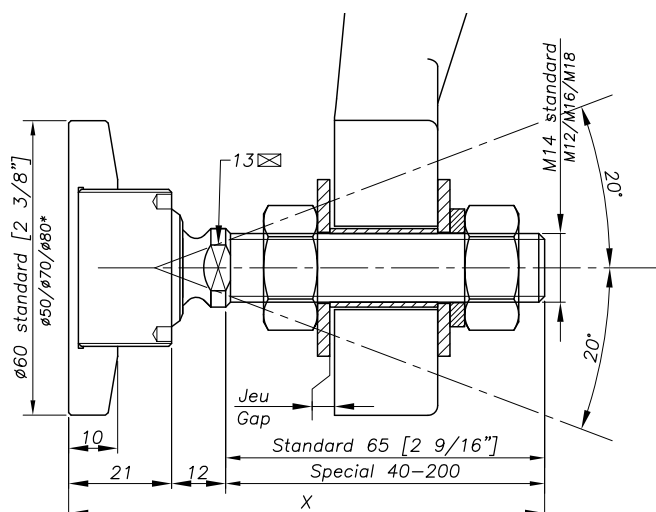
Patent N° : 9806556

Technical assessment available online : www.sadev.com

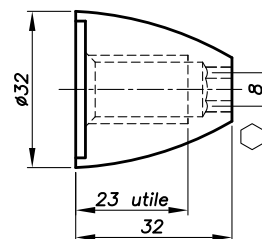
Sealing strip between glazing available p.8.26

The swivel fitting R1006 TSSA has been specially designed for bonding type Dow Corning TSSA (Transparent Structural Silicone Adhesive).
More information on www.dowcorning.com.

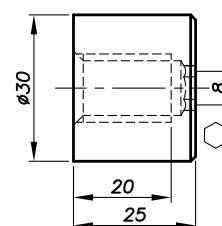
Dimensions



OPTION MONTI M 14



OPTION 3025 M 14



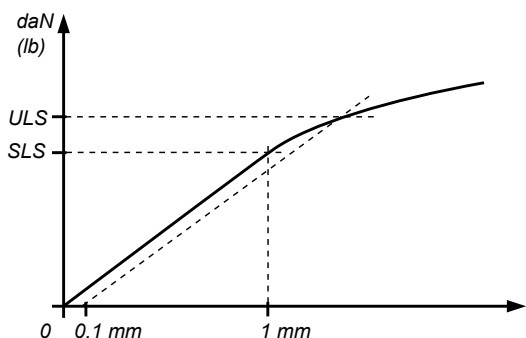
* Option possible

No glass drilling

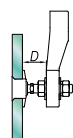
SHEAR STRESS	MATERIAL
0.593 kN at 1mm deformation	1.191 kN at 1mm deformation
6.492 kN at failure	5.949 kN at failure
778 N/mm shear rigidity	
453 kNmm Bending Moment	
1191 kN tensile stress at 1mm deformation	
5949 kN tensile stress at failure	

It is important to provide the following information with each request: the glass composition (ex.: 10 mm monolithic, 8.8.4 laminated, 8.8.2-12-10 insulating) / the length and diameter of the threaded axle if not standard dimensions (M14, 65 mm) / the reference of the spider to be used as support, or the thickness of an existing support for the delivery of the spacer.

Mechanical performance

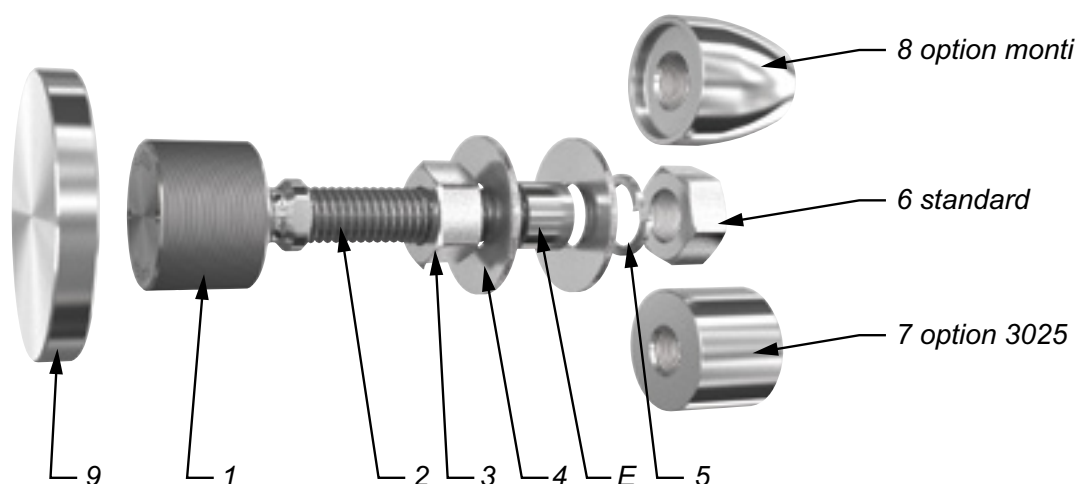


	BENDING CAPACITY			PULL OUT CAPACITY
	D	SLS*	ULS*	ULS*
M 14	45mm	344 daN (773 lb)	577 daN (1297 lb)	2000 daN (4496 lb)
	60mm	153 daN (343 lb)	364 daN (818 lb)	
M16	45mm	504 daN (1133 lb)	827 daN (1859 lb)	
	60mm	253 daN (568 lb)	525 daN (1180 lb)	



*SLS - Serviceability Limit State: load at 1mm deformation
 *ULS = Ultimate Limit State: load at the elastic limit (Rp0.1).
 Values are given without factor of safety.
 Tests available online: www.sadev.com

Components



MARK	QUANTITY	DESIGNATION	MATERIAL
1	1	Swivel body	X2 Cr Ni Mo 17.12.2 as per EN 10088-3
2	1	Threaded Axle	X4 Cr Ni Mo 16.5.1 as per EN 10088-3
3	1	Nut DIN 934	A4
4	2	Washer	A4
5	1	Lock washer DIN127	A4
6	1	Nut DIN 934	A4
7	1	3025 Cap nut - Option	X2 Cr Ni Mo 17.12.2 as per EN 10088-3
8	1	Monti cap nut - Option	X2 Cr Ni Mo 17.12.2 as per EN 10088-3
9	1	Adhesion disk	X2 Cr Ni Mo 17.12.2 as per EN 10088-3

Suggested mounting instruction

Attach adhesion disk N°9 onto the glass in accordance with technical specifications of UV glue manufacturer and glass fabricator (Can be adhered in the factory).

Mount parts N° 1/2 into part N°9. Thread on nut N°3 and apply washer N° 4.

Insert the threaded axle into the support with spacer E (available on request), see technical page. Adjust the depth. Mount the second washer N° 4, lock washer N°5, and nut N°6. Tighten to 60Nm (45 ft-lb) using a 22 mm wrench.

SADEV recommends using thread locking compound whenever possible.

