

R 1008

Designation : swivel fitting, countersunk head, for installation from the outside

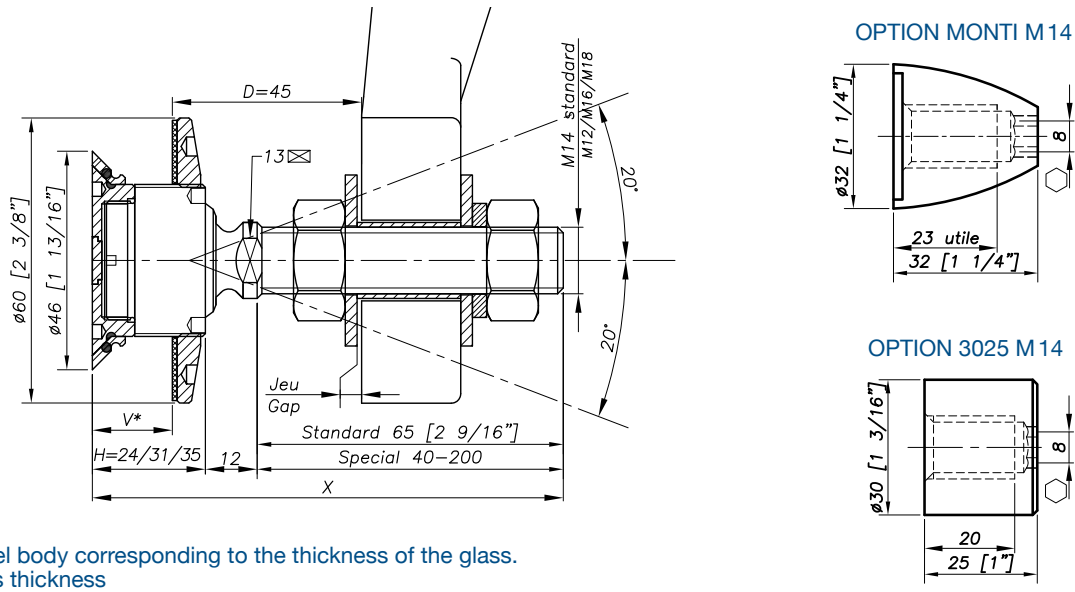


Patent No : 9806556
 Technical assessment available online : www.sadev.com
 Sealing strip between glazing available p.8.26

REFERENCE TO ORDER			
GLASS THICKNESS	Ø AXIS	LENGTH AXIS (mm)	ARTICLE CODE
$8 \leq V \leq 15$	M14	65	R1008-0815-1465*
$15 < V \leq 22$	M14	65	R1008-1522-1465
$22 < V \leq 26$	M14	65	R1008-2226-1465
SPECIAL	SPECIAL	SPECIAL	R1008-V-SP

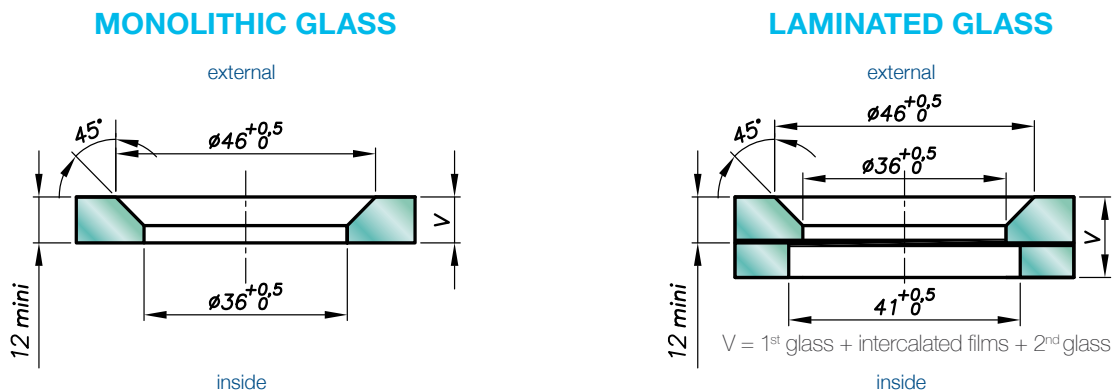
* R1008-0815-1465 : Model - Glass thickness - Type axis and length.
 Seismic swivel fitting optional

Dimensions



H = Swivel body corresponding to the thickness of the glass.
 V* = glass thickness

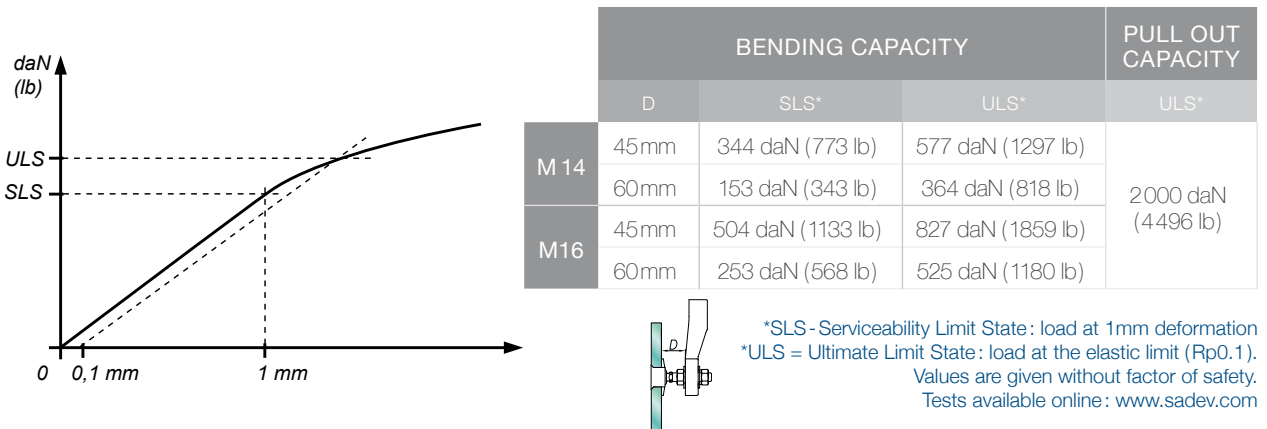
Glass drilling



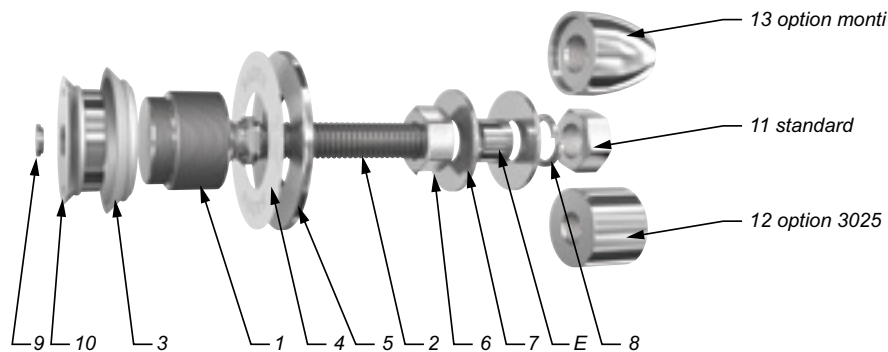
Available for glass thicknesses from 8 to 31.52 mm, for other thicknesses please consult us.

It is important to provide the following information with each request: the glass composition (ex.: 10 mm monolithic, 8.8.4 laminated, 8.8.2-12-10 insulating) / the length and diameter of the threaded axle if not standard dimensions (M14, 65 mm) / the reference of the spider to be used as support, or the thickness of an existing support for the delivery of the spacer.

Mechanical performance



Components



MARK	QUANTITY	DESIGNATION	MATERIAL
1	1	Swivel body	X2 Cr Ni Mo 17.12.2 as per EN 10088-3
2	1	Threaded Axle	X4 Cr Ni Mo 16.5.1 as per EN 10088-3
3	1	Glass hole grommet	AW-1050A as per EN 573-3/Al 99.5%
4	1	Contact washer	White polyacetyl/white polyethylene
5	1	Glass nut Ø60	X2 Cr Ni Mo 17.12.2 as per EN 10088-3
6	1	Nut DIN 934	A4
7	2	Washer	A4
8	1	Lock washer DIN127	A4
9	1	Cover cap	X5 Cr Ni Mo 17.12.2 as per EN 10088-3
10	1	Countersunk bush	X5 Cr Ni Mo 17.12.2 as per EN 10088-3
11	1	Nut DIN 934	A4
12	1	3025 Cap nut - Option	X2 Cr Ni Mo 17.12.2 as per EN 10088-3
13	1	Monti cap nut - Option	X2 Cr Ni Mo 17.12.2 as per EN 10088-3

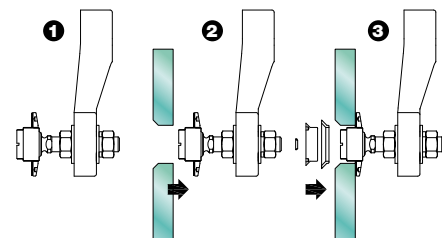
Suggested mounting instruction

Mount nut N°6 and washer N°7 onto parts N° 1/2.

Insert the threaded axle into the support with spacer E (available on request), see technical page. Adjust the depth. Mount washer N°7, lock washer N°8 and nut N°11. Tighten to 60Nm (45 ft-lb) using a 22 mm wrench. Apply contact washer N°4 and glass nut N°5 onto parts N° 1/2. Adjust to desired position. Mount the glass onto the assembly.

Thread on the countersunk bush N°10 with grommet N°3 onto parts N° 1/2.

Tighten to 20Nm (15 ft-lb) for monolithic glass and 10Nm (7.5 ft-lb) for laminated glass using SADEV catalog ref. 097581160 and ref. CLE-DYN-072031. The swivel fitting is maintained with a flat screw driver while fixing part N°10. Glue in the cover cap N°9 into the countersunk bush N°10 using silicone.



SADEV recommends using thread locking compound whenever possible.