

R 1019

Designation : swivel fitting, countersunk head.
The head is laminated between layers of glass

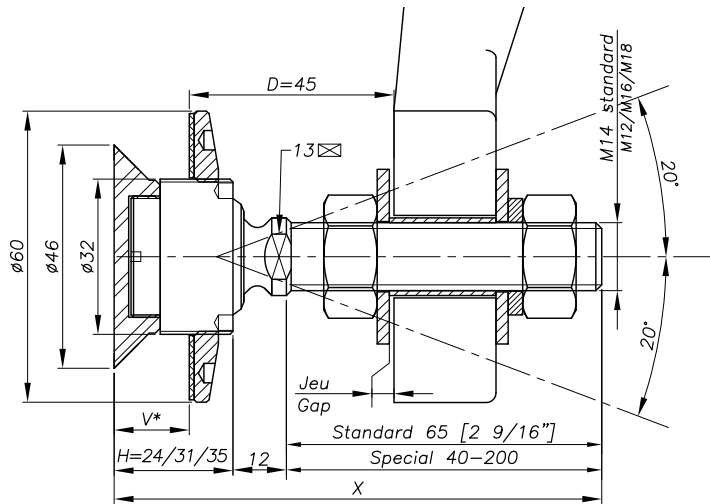


REFERENCE TO ORDER			
GLASS THICKNESS	Ø AXIS	LENGTH AXIS (mm)	ARTICLE CODE
$8 \leq V \leq 15$	M14	65	R1019-0815-1465*
$15 < V \leq 22$	M14	65	R1019-1522-1465
$22 < V \leq 26$	M14	65	R1019-2226-1465
SPECIAL	SPECIAL	SPECIAL	R1019-V-SP

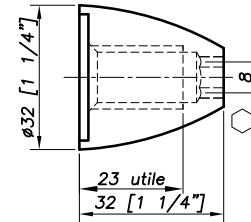
Patent No : 9806556
Technical assessment available online : www.sadev.com
Sealing strip between glazing available p.8.26

* R1019-0815-1465 : Model - Glass thickness - Type axis and length.

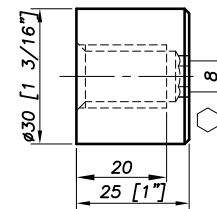
Dimensions



OPTION MONTI M 14

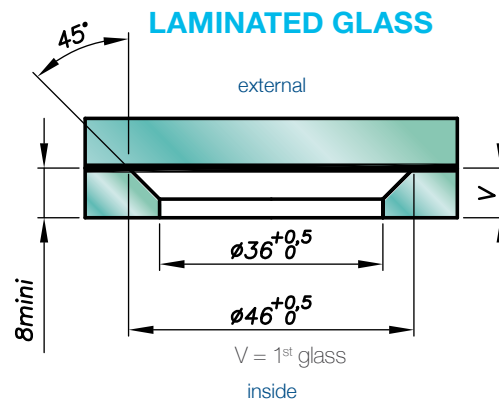


OPTION 3025 M 14



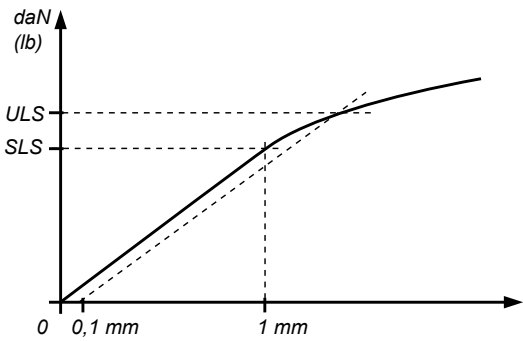
H = Swivel body corresponding to the thickness of the glass.
V* = glass thickness

Glass drilling

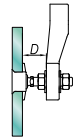


It is important to provide the following information with each request: the glass composition (ex.: 10 mm monolithic, 8.8.4 laminated, 8.8.2-12-10 insulating) / the length and diameter of the threaded axle if not standard dimensions (M14, 65 mm) / the reference of the spider to be used as support, or the thickness of an existing support for the delivery of the spacer.

Mechanical performance

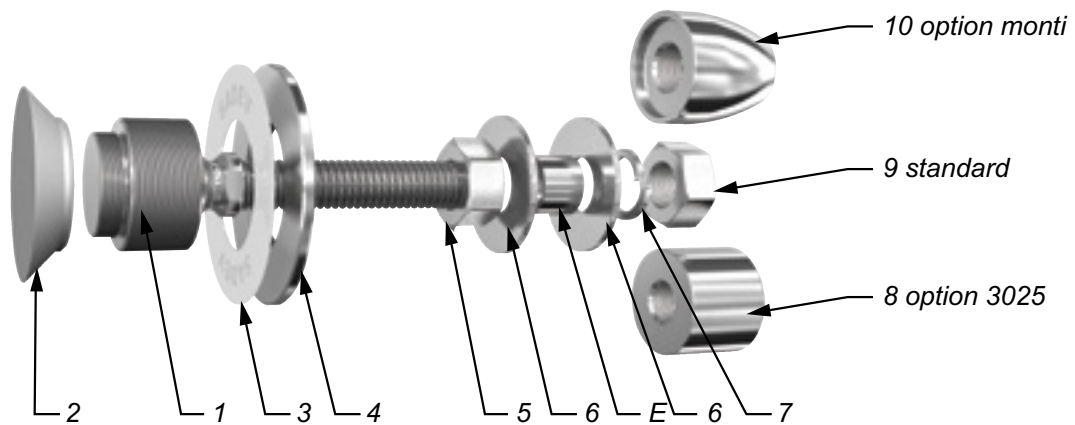


	BENDING CAPACITY			PULL OUT CAPACITY
	D	SLS*	ULS*	ULS*
M 14	45mm	344 daN (773 lb)	577 daN (1297 lb)	1 400 daN (3147 lb)
	60mm	153 daN (343 lb)	364 daN (818 lb)	
M16	45mm	504 daN (1133 lb)	827 daN (1859 lb)	
	60mm	253 daN (568 lb)	525 daN (1180 lb)	



*SLS - Serviceability Limit State: load at 1mm deformation
 *ULS = Ultimate Limit State: load at the elastic limit (Rp0.1).
 Values are given without factor of safety.
 Tests available online: www.sadev.com

Components



MARK	QUANTITY	DESIGNATION	MATERIAL
1	1	Swivel body	X2 Cr Ni Mo 17.12.2 as per EN 10088-3
2	1	Countersunk bush	AW-6060 T5 as per EN 573-3 / Al Mg Si0.5
3	1	Contact washer	White polyacetyl / white polyethylene
4	1	Glass nut Ø60	X2 Cr Ni Mo 17.12.2 as per EN 10088-3
5	1	Nut DIN 934	A4
6	2	Washer	A4
7	1	Washer DIN 127	A4
8	1	3025 Cap nut - Option	X2 Cr Ni Mo 17.12.2 as per EN 10088-3
9	1	Nut DIN 934	A4
10	1	Monti cap nut - Option	X2 Cr Ni Mo 17.12.2 as per EN 10088-3

Suggested mounting instruction

1 – In factory

Mount countersunk bush N°2 into the glass.

Assemble the second layer of glass.

2 – On site

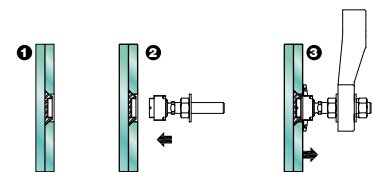
Mount the swivel body N°1 into the countersunk bush N°2 using SADEV wrench ref. 097581160.

Mount the parts N°3 and N°4 and tighten to 10 Nm for laminated glass with SADEV wrench.

Mount the Nut N°5 and washer N°6.

Insert the threaded axle into the support with spacer E (available on request), see technical page. Adjust the depth.

Mount the washer N°6 + washer DIN 127 + nut N°5 and tighten to 60 Nm with plate wrench 22mm



SADEV recommends using thread locking compound whenever possible