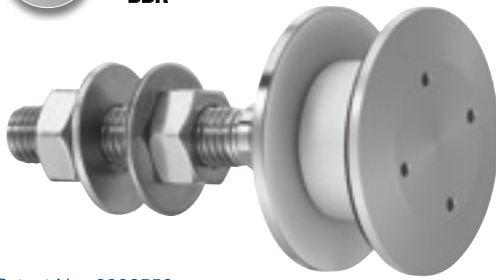


R 1039

Designation : swivel fitting, cylindrical head – insulated glass unit.
Fixed on one layer of glass only

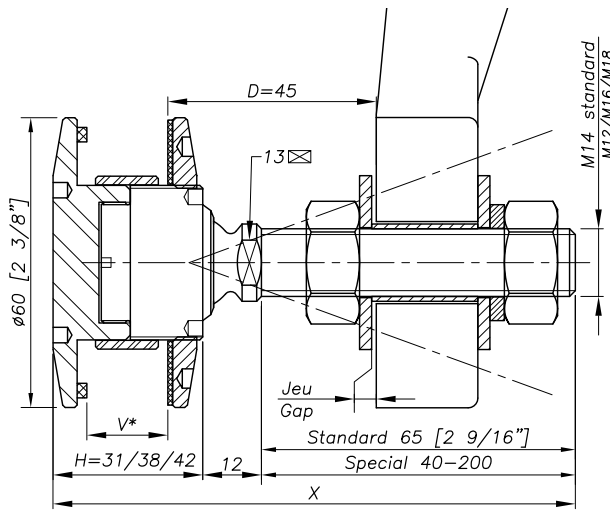


REFERENCE TO ORDER			
GLASS THICKNESS	Ø AXIS	LENGTH AXIS (mm)	ARTICLE CODE
Bespoke glass thickness	M14	65	R1039-V-1465*
SPECIAL	SPECIAL	SPECIAL	R1039-V-SP

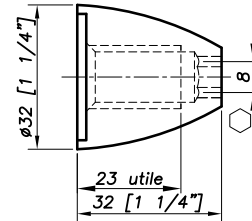
* R1039-V-1465 : Model - Glass thickness - Type axis and length.
Rotule BBR en option.

Patent No : 9806556
Technical assessment available online : www.sadev.com
Sealing strip between glazing available p.8.26

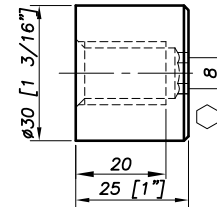
Dimensions



OPTION MONTI M 14

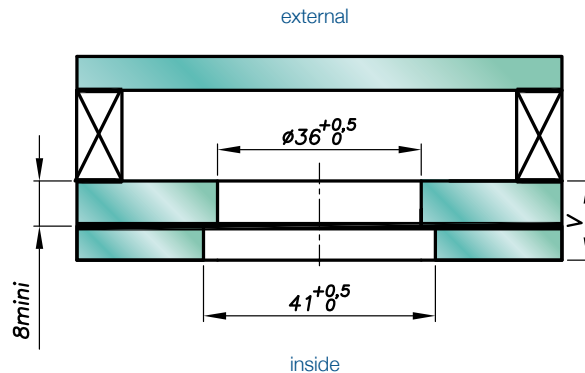


OPTION 3025 M 14



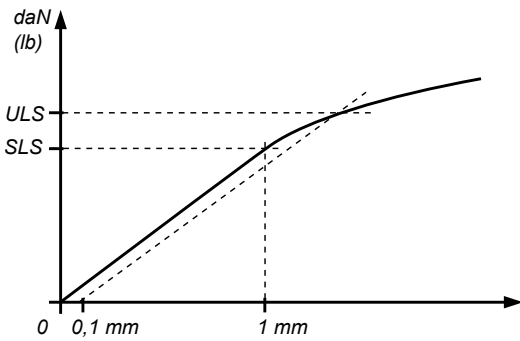
H = Swivel body corresponding to the thickness of the glass.
V* = glass thickness

Glass drilling

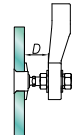


It is important to provide the following information with each request: the glass composition (ex.: 10 mm monolithic, 8.8.4 laminated, 8.8.2-12-10 insulating) / the length and diameter of the threaded axle if not standard dimensions (M14, 65 mm) / the reference of the spider to be used as support, or the thickness of an existing support for the delivery of the spacer.

Mechanical performance

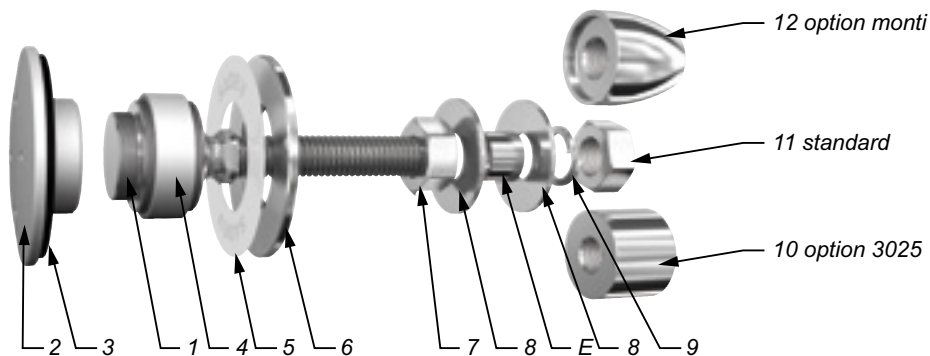


	BENDING CAPACITY			PULL OUT CAPACITY
	D	SLS*	ULS*	ULS*
M 14	45mm	344 daN (773 lb)	577 daN (1297 lb)	1 400 daN (3147 lb)
	60mm	153 daN (343 lb)	364 daN (818 lb)	
M 16	45mm	504 daN (1133 lb)	827 daN (1859 lb)	
	60mm	253 daN (568 lb)	525 daN (1180 lb)	



*SLS - Serviceability Limit State: load at 1mm deformation
 *ULS = Ultimate Limit State: load at the elastic limit (Rp0.1).
 Values are given without factor of safety.
 Tests available online: www.sadev.com

Components



MARK	QUANTITY	DESIGNATION	MATERIAL
1	1	Swivel body	X2 Cr Ni Mo 17.12.2 as per EN 10088-3
2	1	Bush	AlCu4MgSi / 2017A (AU4G) as per EN 573-3
3	1	Contact washer	EPDM
4	1	Glass hole grommet	AW-1050A as per EN 573-3 / Al 99.5%
5	1	Contact washer	White polyacetyl / white polyethylene
6	1	Glass nut Ø60	X2 Cr Ni Mo 17.12.2 as per EN 10088-3
7	1	Nut DIN 934	A4
8	2	Washer	A4
9	1	Washer DIN 127	A4
10	1	3025 Cap nut - Option	X2 Cr Ni Mo 17.12.2 as per EN 10088-3
11	1	Nut DIN 934	A4
12	1	Monti cap nut - Option	X2 Cr Ni Mo 17.12.2 as per EN 10088-3

Suggested mounting instruction

1 – In factory :

Mount parts N°2, 3, 4 into the glass with a Butyl sealing strip (not included). Assembly by isolating glazing.

2 – On site

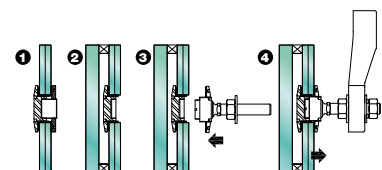
Mount the N°1 into bush N°2.

Attach contact washer N° 5 and glass nut N° 6 and tighten to 10 Nm (7.5 ft-lb) for laminated glass using SADEV ref. 097581160 and ref. CLE-DYN-072031.

Butyl cord applied between item 1 and the glass.

Mount nut N° 7 and washer N° 8.

Insert the threaded axle into the support with spacer E (available on request), see technical page. Adjust the depth. Mount washer N° 8, lock washer N° 9, and tighten to 60 Nm (45 ft-lb) using a 22 mm wrench.



SADEV recommends using thread locking compound whenever possible.