

# V 2003

Designation : fixed bolt, cylindrical head, for installation from the outside

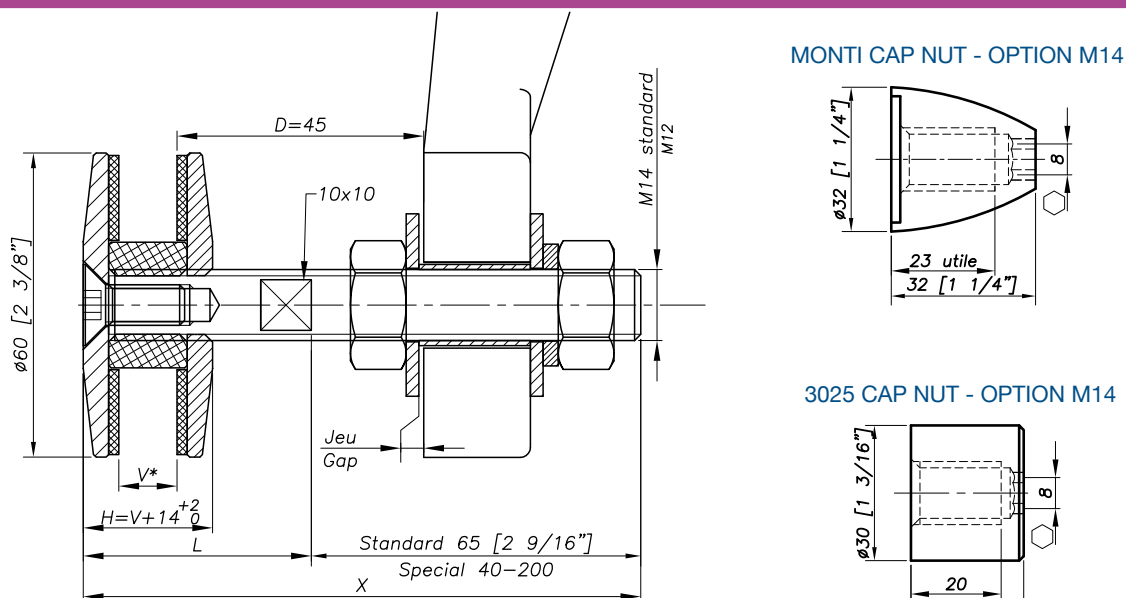


REFERENCE TO ORDER					
GLASS THICKNESS	Ø AXIS	LENGTH AXIS (MM)	LENGTH L	LENGTH X	ARTICLE CODE
$6 \leq V \leq 22$	M14	65	40	$115 \pm 2$	V2003-0622-1465
$22 < V \leq 26$	M14	65	45	$120 \pm 2$	V2003-2226-1465

\* V2003-0622-1465 : Model - Glass Thickness - type axis and length

Sealing strip between glazing available p.8.26

## Dimensions

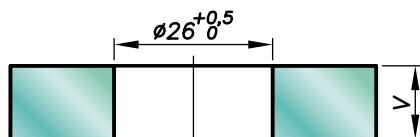


H= Swivel body corresponding to the thickness of the glass.

V\* = glass thickness.

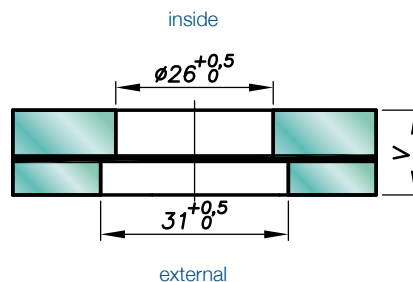
## Glass drilling

### MONOLITHIC GLASS



### LAMINATED GLASS

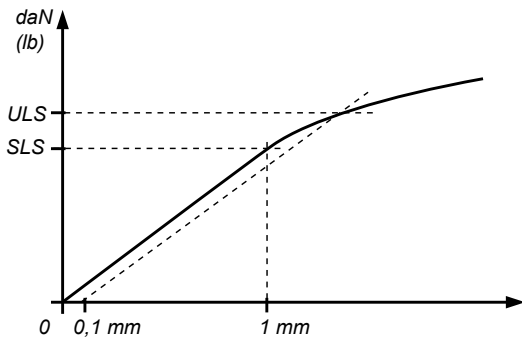
V = 1<sup>st</sup> glass + intercalated films + 2<sup>nd</sup> glass



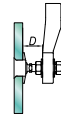
Available for glass thicknesses from 8 to 31.52 mm, for other thicknesses please consult us.

It is important to provide the following information with each request : the glass composition (ex.: 10mm monolithic, 8.8.4 laminated, 8.8.2-12-10 insulating) / the length and diameter of the threaded axle if not standard dimensions (M14, 65mm) / the reference of the spider to be used as support, or the thickness of an existing support for the delivery of the spacer.

## Mechanical performances

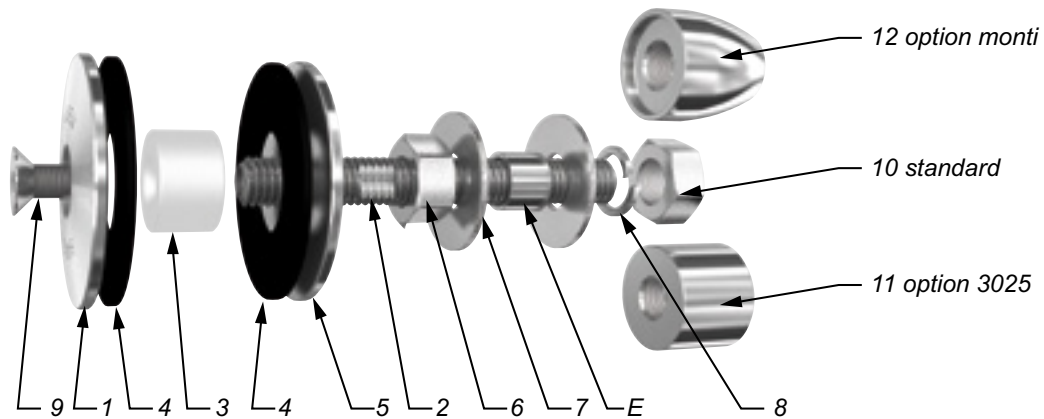


	BENDING CAPACITY			PULL OUT CAPACITY
	D	SLS*	ULS*	ULS*
M12	45 mm	127 daN (285 lb)	269 daN (604 lb)	810 daN (1820 lb)
	60 mm	65 daN (146 lb)	147 daN (330 lb)	
M14	45 mm	317 daN (712 lb)	538 daN (1209 lb)	1443 daN (3243 lb)
	60 mm	144 daN (323 lb)	313 daN (703 lb)	



\*SLS : Serviceability Limit State : load at 1 mm deformation  
 \*ULS : Ultimate Limit State : load at the elastic limit (Rp0.1)  
 Values are given without factor of safety  
 Tests available online : [www.sadev.com](http://www.sadev.com)

## Components



MARK	QUANTITY	DESIGNATION	MATERIAL
1	1	External plate	X2 Cr Ni Mo 17.12.2 as per EN 10088-3
2	1	Threaded axle	A4
3	1	Spacer Ø 25	Polyacetyl
4	2	Contact washer	EPDM
5	1	Glass nut Ø 60	X2 Cr Ni Mo 17.12.2 as per EN 10088-3
6	1	Nut DIN 934	A4
7	2	Washer	A4
8	1	Lock washer 127	A4
9	1	Bolt DIN7991 M8x20	A4
10	1	Nut DIN 934	A4
11	1	3025 Cap Nut - Option	X2 Cr Ni Mo 17.12.2 as per EN 10088-3
12	1	Monti Cap Nut - Option	X2 Cr Ni Mo 17.12.2 as per EN 10088-3

## Suggested mounting instruction

### A – Classic mounting

Insert parts No.2/3/4/5 into the glass hole. Mount the second contact washer No.4, external plate No.1, and bolt No.9 and tighten to 20Nm (15 ft-lb) for monolithic glass and 10Nm (7.5 ft-lb) for laminated glass. Thread on nut No.6 and apply washer No.7.

Insert the threaded axle into the support with spacer E (available on request), see technical page. Adjust the depth. Mount the second washer No.7, lock washer No.8, and nut No.10. Tighten to 60Nm (45 ft-lb) using a 22mm wrench.

### B – Blind mounting: installation from the outside (no access to the structure)

Mount nut No.6 and washer No.7 onto parts No.2/3/4/5. Insert the threaded axle into the support with spacer E (available on request), see technical page. Adjust the depth. Mount the second washer No.7, lock washer No.8, and nut No.10. Tighten to 60Nm (45 ft-lb) using a 22mm wrench. Set the glass onto the assembly, be careful not to put unprotected glass edges in contact with bare metal parts. Mount parts No.1/4 and 9 onto parts No.2/3/4/5 and tighten to 20Nm (15 ft-lb) for monolithic glass and 10Nm (7.5 ft-lb) for laminated glass using a 10mm wrench and a 5mm hex key.

SADEV recommends using thread locking compound whenever possible.