

V 2004

Designation : fixed bolt, cylindrical head, for installation from the outside

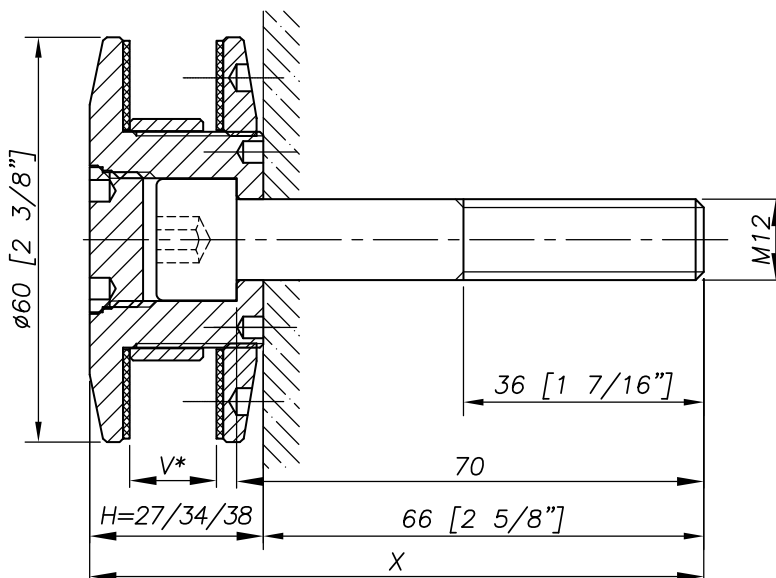


REFERENCE TO ORDER			
GLASS THICKNESS	Ø AXIS	LENGTH AXIS (MM)	ARTICLE CODE
$8 \leq V \leq 15$	M12	66	V2004-0815
$15 < V \leq 22$	M12	66	V2004-1522
$22 < V \leq 26$	M12	66	V2004-2226
Special	Special	Special	V2004-V-SP

Sealing strip between glazing available p.8.26

* V2004-0815 : Model - Glass Thickness

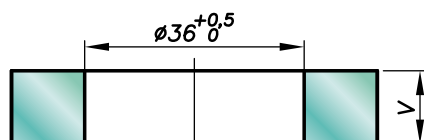
Dimensions



H= Swivel body corresponding to the thickness of the glass.
V* = glass thickness.

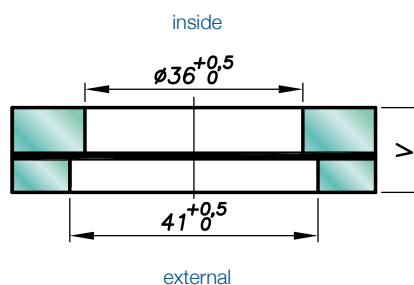
Glass drilling

MONOLITHIC GLASS



LAMINATED GLASS

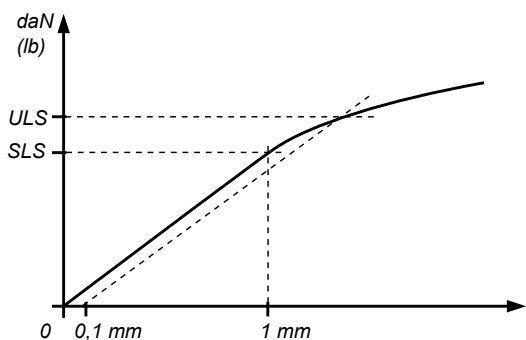
V = 1st glass + intercalated films + 2nd glass



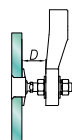
Available for glass thicknesses from 8 to 31.52 mm, for other thicknesses please consult us.

It is important to provide the following information with each request: the glass composition (ex.: 10mm monolithic, 8.8.4 laminated, 8.8.2-12-10 insulating) / the length and diameter of the threaded axle if not standard dimensions (M14, 65mm) / the reference of the spider to be used as support, or the thickness of an existing support for the delivery of the spacer.

Mechanical performances

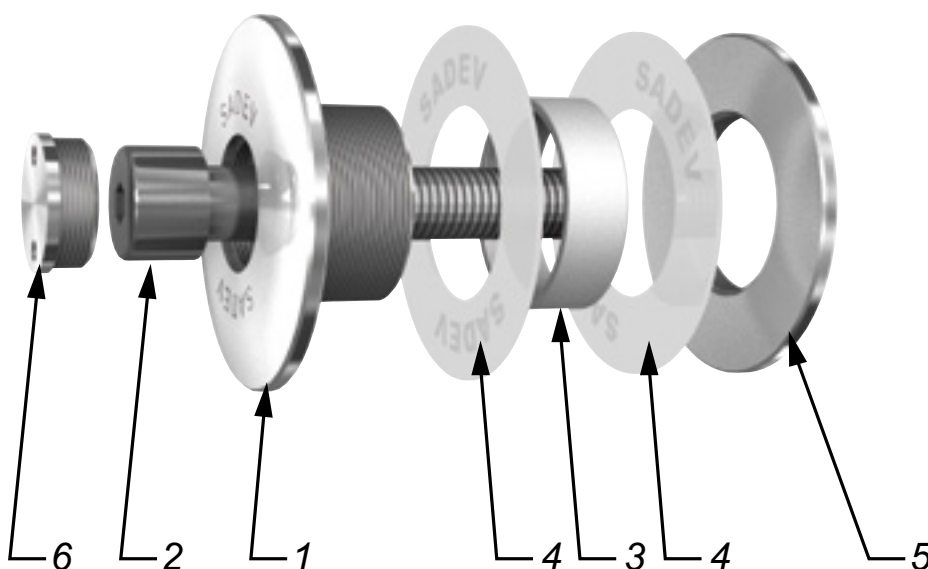


	SHEAR STRENGTH	PULL OUT CAPACITY
	ULS*	ULS*
M12	4342 daN (9761 lb)	3709 daN (8338 lb)



*ULS – Ultimate Limit State : load at the elastic limit (Rp0.1)
 Values are given without factor of safety
 Tests available online: www.sadev.com

Components



MARK	QUANTITY	DESIGNATION	MATERIAL
1	1	Body	X2 Cr Ni Mo 17.12.2 as per EN 10088-3
2	1	Bolt DIN912 M12-70	A4
3	1	Glass hole gro mmet	AW-1050A as per EN 573-3 / Al 99.5%
4	2	Contact washer	White polyacetyl / white polyethylene
5	1	Glass nut Ø 60	X2 Cr Ni Mo 17.12.2 as per EN 10088-3
6	1	Cover cap	X2 Cr Ni Mo 17.12.2 as per EN 10088-3

Suggested mounting instruction

Insert parts No.1, 4, and 3 into the glass hole.

Mount the second contact washer No.4 and glass nut No.5 and tighten to 20Nm (15 ft-lb) for monolithic glass and 10Nm (7.5 ft-lb) for laminated glass using SADEV tools ref. 097581160 and ref. CLE-DYN-072031.

Mount into the support with bolt No.2, tighten in function of the support with a 10mm hex key.

Mount cover cap No.6 using SADEV tool ref. 097581160.

SADEV recommends using thread locking compound whenever possible.