

# V 2006

Designation : fixed bolt, countersunk head

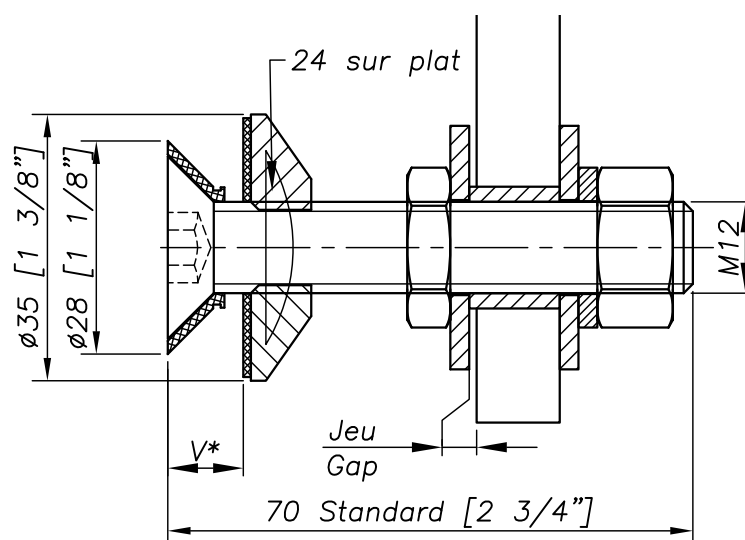


REFERENCE TO ORDER			
GLASS THICKNESS	Ø AXIS	LENGTH AXIS (MM)	ARTICLE CODE
$08 \leq V \leq 22$	M12	70	V2006-0822

\* V2006-0822 : Model - Glass Thickness. According to the production series, the screw head may present a marking.

Sealing strip between glazing available p.8.26

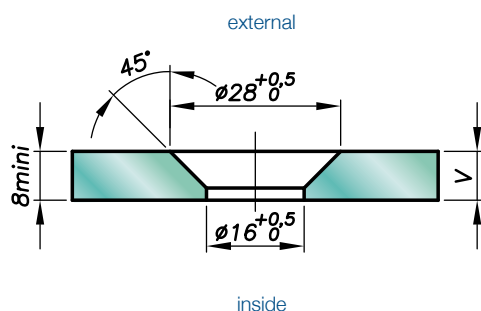
## Dimensions



H= Swivel body corresponding to the thickness of the glass.  
V\* = glass thickness.

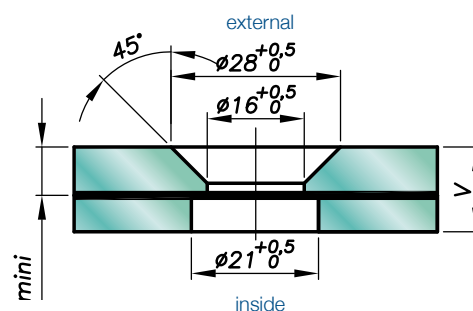
## Glass drilling

### MONOLITHIC GLASS



### LAMINATED GLASS

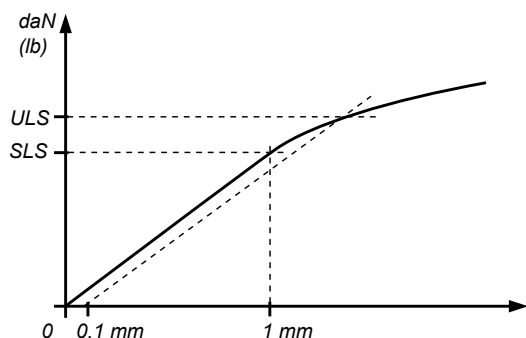
V = 1<sup>st</sup> glass + intercalated films + 2<sup>nd</sup> glass



Available for glass thicknesses from 8 to 31.52 mm, for other thicknesses please consult us.

It is important to provide the following information with each request : the glass composition (ex.: 10mm monolithic, 8.8.4 laminated, 8.8.2-12-10 insulating) / the length and diameter of the threaded axle if not standard dimensions (M14, 65mm) / the reference of the spider to be used as support, or the thickness of an existing support for the delivery of the spacer.

## Mechanical performances



M12	SHEAR STRENGTH	PULL OUT CAPACITY
	ULS*	ULS*
	4342 daN* (9761 lb)	3399 daN (7641 lb)



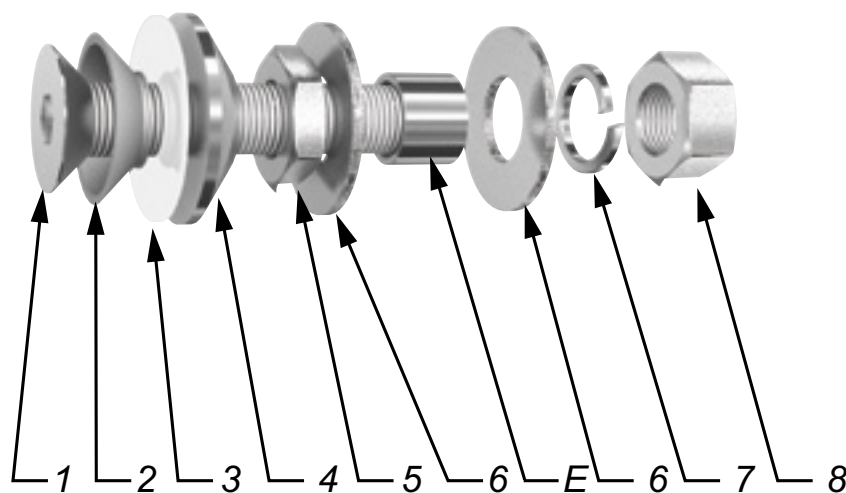
\*SLS : Serviceability Limit State : load at 1 mm deformation

\*ULS : Ultimate Limit State : load at the elastic limit (Rp0.1)

Values are given without factor of safety

Tests available online : [www.sadev.com](http://www.sadev.com)

## Components



MARK	QUANTITY	DESIGNATION	MATERIAL
1	1	Bolt DIN912 M12-70	A4
2	1	Glass hole grommet	AW-1050A as per EN 573-3 / Al 99.5%
3	1	Contact washer	White polyacetyl / white polyethylene
4	1	Glass nut Ø 35	X2 Cr Ni Mo 17.12.2 as per EN 10088-3
5	1	Nut DIN 439 M12	A4
6	2	Washer Ø 32	A4
7	1	Lock washer 127 B12	A4
8	1	Nut DIN 934 M12	A4

## Suggested mounting instruction

Insert parts No.1 and 2 into the glass.

Mount contact washer No.3 and glass nut No.4 and tighten to 20Nm (15 ft-lb) for monolithic glass and 10Nm (7.5 ft-lb) for laminated glass using a 8mm hex key and a 24mm wrench.

Mount nut No.5 and washer No.6. Insert the thread axle into the support with spacer E (available on request), see technical page. Adjust the depth.

Mount the second washer No.6, lock washer No.7, and nut No.8. Tighten to 60Nm (45 ft-lb) using a 19mm wrench.

SADEV recommends using thread locking compound whenever possible.