

# S 3105

Designation : casted stainless steel spider, with plate.

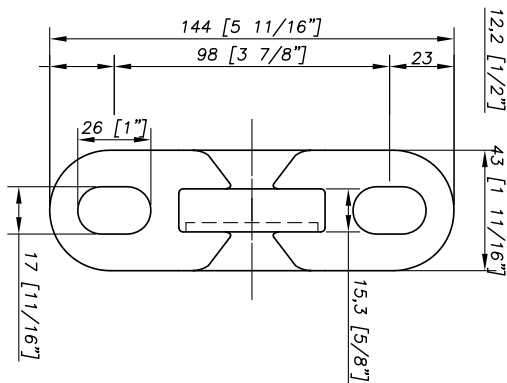
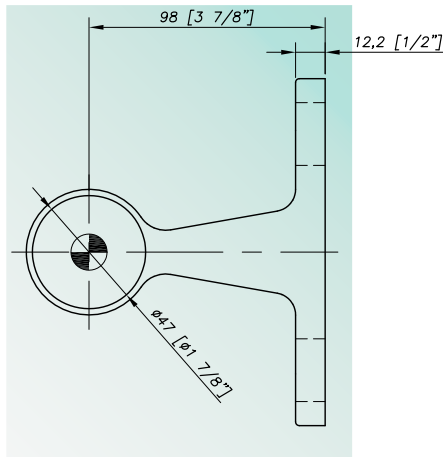


GLASS SIDE VIEW

Material : AISI 316  
Finish : polished GR400

## Dimensions

GLASS SIDE VIEW

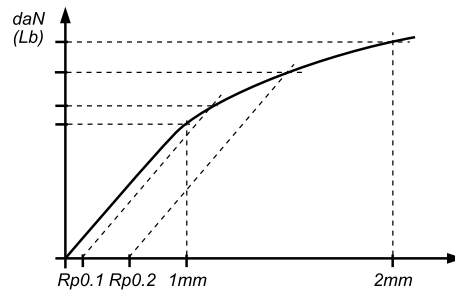


## Mechanical performances

LOAD PARALLEL TO GLASS PER ARM	LOAD PARALLEL TO GLASS PER ARM	
		1 mm (SLS*)
	2 mm	1298 daN (2918 lb)
	Rp0,1 (ULS**)	772 daN (1735 lb)
	Rp0,2	945 daN (2124 lb)

LOAD PERPENDICULAR TO GLASS PER ARM	LOAD PERPENDICULAR TO GLASS PER ARM	
		1 mm (SLS*)
	2 mm	903 daN (2030 lb)
	Rp0,1 (ULS**)	820 daN (1843 lb)
	Rp0,2	968 daN (2176 lb)



\*SLS : Serviceability Limit State - load at 1 mm deformation  
\*\*ULS – Ultimate Limit State : load at the elastic limit (Rp0.1).  
Values are given without factor of safety.

## Suggested mounting instruction

The fixing of the spider is done with a M16 bolt (out of Sadev supply). The slotted holes  $\varnothing 17 \times 24$  mm and free holes  $\varnothing 24$  mm in the spider are not to be used to adjust the spider! They are needed to absorb the manufacturing tolerances and the thermal deformation of the glass and of the structure. The spiders are standardized for M14 fittings (FXR, FXV). Other diameters are available on request.

SADEV recommends using thread locking compound, except in case of specific mounting constraints.

# Stainless steel spacer

Designation : **casted stainless steel spider, with plate.**

The spacer is compulsory in order to allow the free displacement of the fitting towards the spider.  
One spacer per spider's arm (or per fitting) are needed.



DESIGNATION	DIAMETER OF THE FITTING	REFERENCE
Spacer for S3000, S3000 DU, S3001 EVO, S3101 EVO, S3100, S3100 DU, S3003, S3105 thickness 12	M12	ENT-12-16.5-12.5
Spacer for S3003 thickness 8	M12	ENT-12-16.5-8.5
Spacer for S3003 thickness 10	M12	ENT-12-16.5-10.5
Spacer for S3003 thickness 15	M12	ENT-12-16.5-15.5
Spacer for S3002, S3007	M12	ENT-12-16.5-21.5
Spacer for S3000, S3000 DU, S3001 EVO, S3101 EVO, S3100, S3100 DU, S3003, S3105 thickness 12	M14	ENT-14-16.5-12.5
Spacer for S3003 thickness 8	M14	ENT-14-16.5-8.5
Spacer for S3003 thickness 10	M14	ENT-14-16.5-10.5
Spacer for S3003 thickness 15	M14	ENT-14-16.5-15.5
Spacer for S3002, S3007	M14	ENT-14-16.5-21.5
Spacer for S3000, S3000 DU, S3001 EVO, S3101 EVO, S3100, S3100 DU, S3003, S3105 thickness 12	M16	ENT-16-18.5-12.5
Spacer for S3003 thickness 8	M16	ENT-16-18.5-8.5
Spacer for S3003 thickness 10	M16	ENT-16-18.5-10.5
Spacer for S3003 thickness 15	M16	ENT-16-18.5-15.5
Spacer for S3002, S3007	M16	ENT-16-18.5-21.5

## Stainless steel elastic pin

The pin is compulsory in order to lock the spider in rotation towards the structure. Two pins per spider are needed +5 %.

DESIGNATION	REFERENCE
Pin for S3000, S3001 EVO, S3003	D1481A2-6-36
Pin for S3007	D1481A2-6-60
Pin for S3002	D1481A2-6-45



## Special drill for stainless steel

Special drill for stainless steel. Diameter 6mm.

Reference : 09 90 01 60

