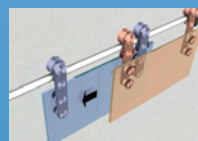


SUMMARY

ACCESSORIES

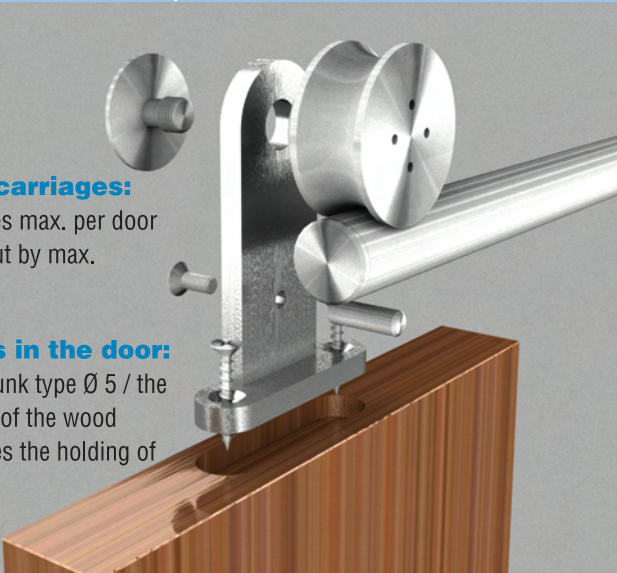
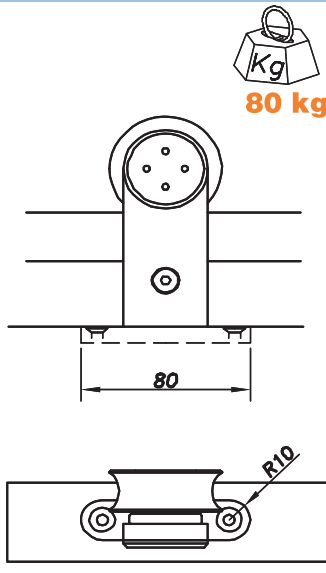
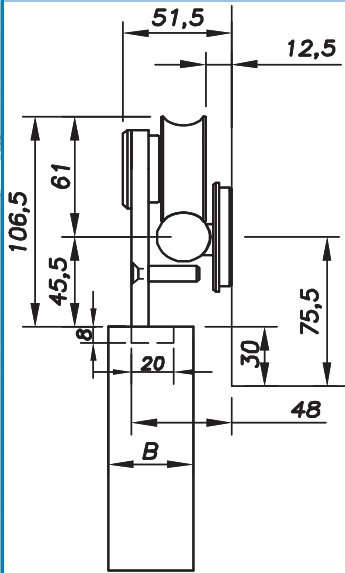
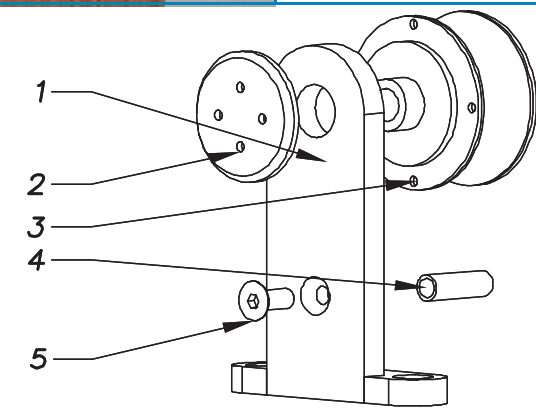
Pages 7.113 >> 7.126

**Wood type sliding door carriage**Ref: 05 55 51 50
> Page 7.114**Telescopic system**Ref: 05 51 51 60
> Page 7.115**Square for fixing the track**Ref: 05 50 59 28
> Page 7.117**Cylindrical fixing plate on ceiling**Ref: 05 50 59 32
> Page 7.119**Fixing on wall by rear**Ref: 05 51 58 50 RL
> Page 7.120**Fixing for false ceiling**Ref: 05 52 69 50
> Page 7.122**Track-to-track connector**

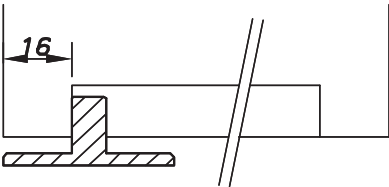
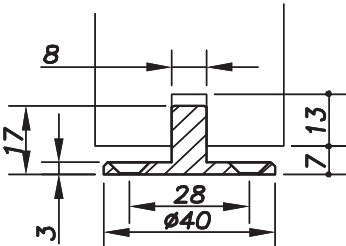

> Page 7.124

**Anti-shock on door / Hydraulic door stop**

> Page 7.125

Model:	05 55 51 50	Wood System
Description:	Wood type sliding door carriage with anti-jump device	
<div><div><p>No. of carriages: 2 carriages max. per door spaced out by max. 1400 mm</p><p>Screws in the door: Countersunk type Ø 5 / the hardness of the wood determines the holding of the door</p></div><div></div></div>		
<div><div><p>Recommendation / use</p><p>Max. weight of the door: 80 kg</p><p>Max. length of the track in a single piece: 3000 mm</p><p>Max. distance between the points: 730 mm</p><p>Door thickness: to determine according to the carriage installation</p><p>Type of track: Drilled track</p><p>Type of screw: Countersunk head Ø 5</p></div><div></div><div><p>Description</p><p>Sliding bar (1)</p><p>Height-adjusting screw (2)</p><p>Sliding roller (3)</p><p>Anti-jump shaft (4)</p><p>Screw (5)</p><p>Weight: 480 g</p></div></div>		
Reference	05 55 51 50	lead time (cf. page 1) 10<Qty

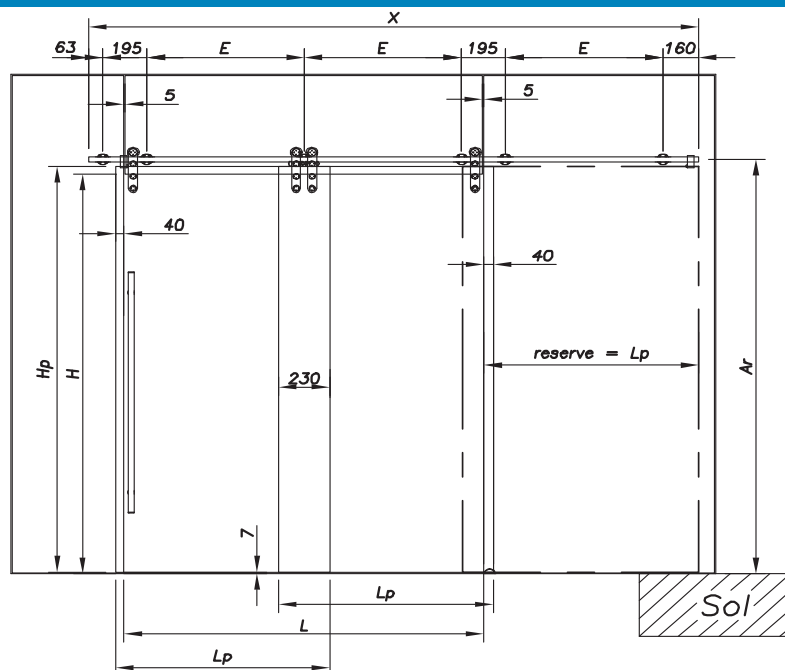
The sliding carriages of the Wood application are compatible with Strong sliding parts only.
For more information, refer to this section

Model:	05 55 56 55	Wood System
Description:	Guide track for wooden door	
<div><p>It is fitted with two Ø 4 countersunk heads screw in the floor</p></div>		<div><p>Description</p><p>Wood guiding track (1)</p><p>Weight: 48 g</p></div>
Reference	05 55 56 55	lead time (cf. page 1) 10<Qty

If components are damaged they can be replaced by request.
Order form end of this chapter.

Telescopic application

Telescopic System



Ar = position of the track shaft
L = width of the hole in the wall
Lp = door width
H = height of the hole in the wall
Hp = door height
E = points distance between centres
X = track length

Max. weight of the door: **75 kg**

Max. distance between the points: **730 mm**

Max. length of the track in a single piece: **3 000 mm**

Glass thickness: **8 to 12 mm** standard.

Others on consultation

Type of track: **Drilled track**

Type of screw: **Countersunk Ø 36**

Tightening of the glass screws:

Monolithic tempered = Min. **15 N.m**

Laminated tempered = **5 N.m**

To make a telescopic door, it is prudent to calculate the available reserve space to verify the feasibility of the installation

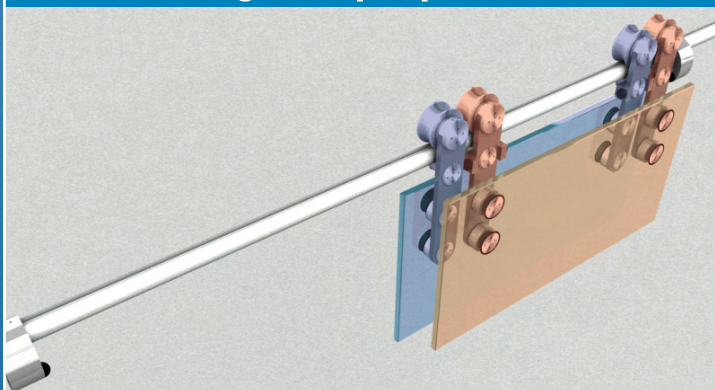
Reserve = L_p

$L_p = [L + (40 \times 2) + 230] : 2$

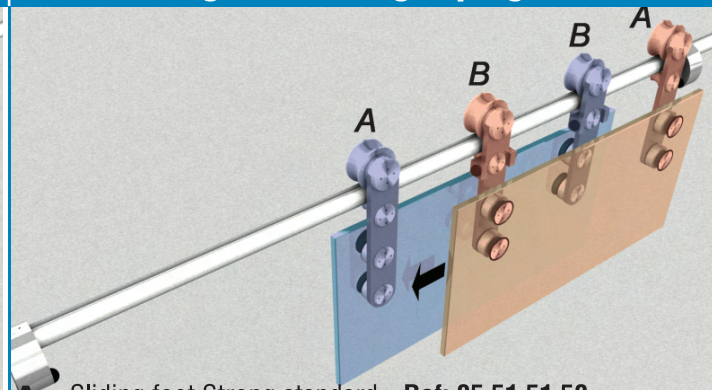
$X = [(L \times 1.5) + 307]$

The sliding carriages of the Telescopic application are compatible with Strong sliding parts only.
 For more information, refer to this section

Stage 1 – Open position



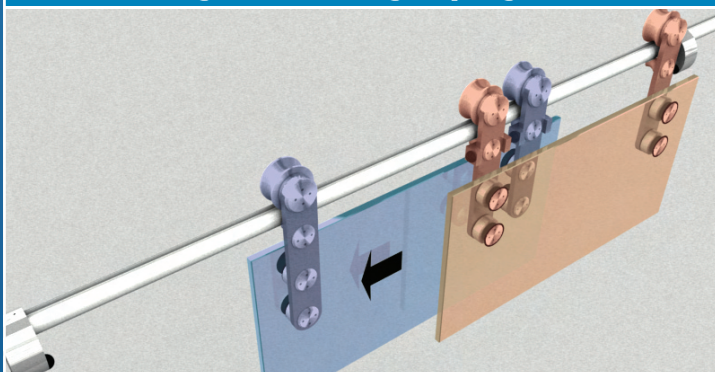
Stage 2 – Closing in progress



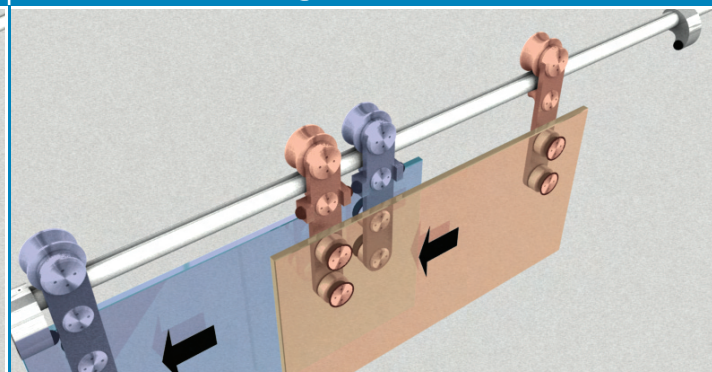
A: Sliding foot Strong standard - Ref: 05 51 51 50

B: Sliding foot Strong telescopic - Ref: 05 51 51 60

Stage 3 – Closing in progress



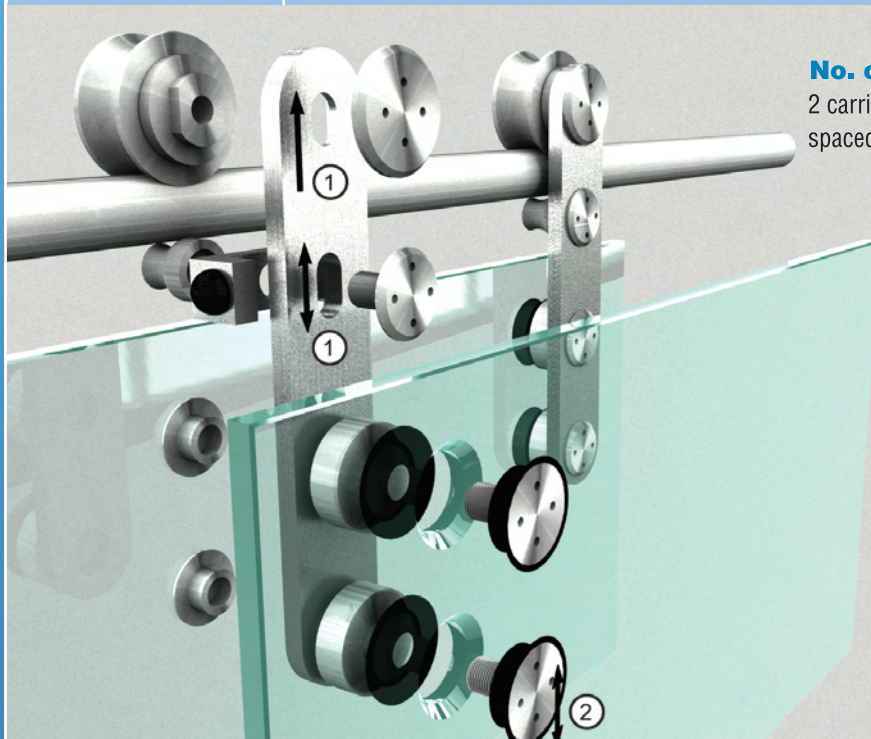
Stage 4 – Closed



If components are damaged they can be replaced by request.

Order form end of this chapter.

Model:	05 51 51 60	Telescopic System
Description:	Strong telescopic sliding carriage with anti-jump device	

**No. of carriages:**

2 carriages max. per glass door
spaced out by max. 1 400 mm

**75 kg****Adjustment (1)**

Vertical adjustment of ± 5 mm

Screws for glass:

Countersunk only

Adjustment (2):

Vertical adjustment of ± 4 mm

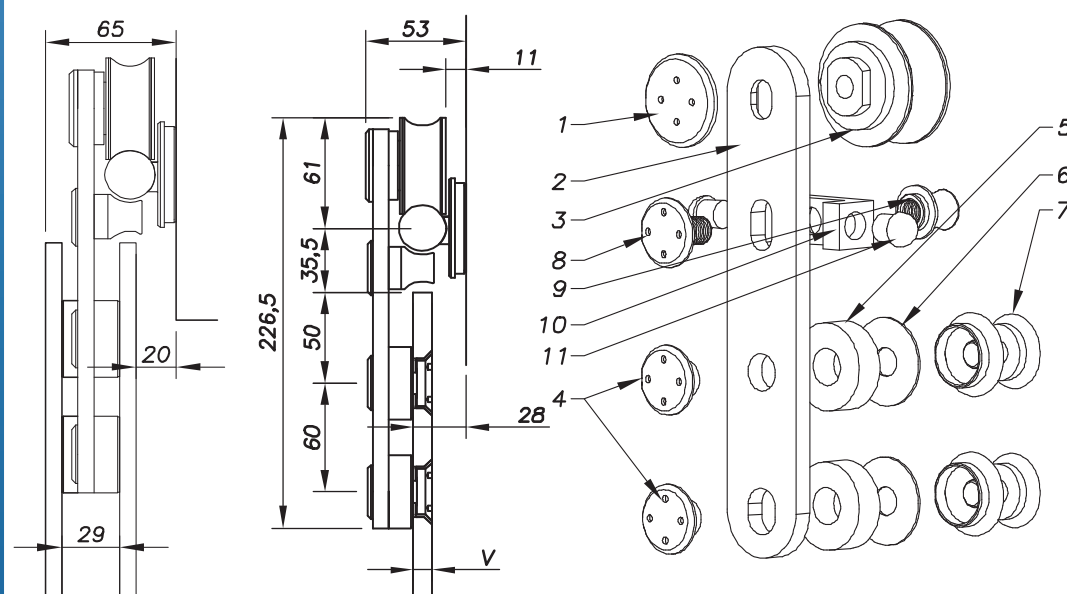
Glass drilling - see Strong sliding

Recommendation / use

Glass thickness: 8 to 12 mm standard.

Other dimensions: on request

Tightening of the glass screws: Monolithic
tempered = Min. 15 N.m / Laminated tempered = 5 N.m

**Description**

- Height-adjusting screw (1)
- Sliding door carriage (2)
- Sliding roller (3)
- Assembling nut (4)
- Spacer (5)
- EPDM washer (6)
- Screw (7)
- Jump adjusting screw (8)
- Anti-jump ring (9)
- Stop support (10)
- Stop (11)

Weight: 1243 g

Type of screw	Glass thickness	Reference	Glass drilling	Qty
	8 to 12	05 51 51 60 06 11 20		Qty<2
			Other glass thickness on order	2<Qty<6
				6<Qty

lead time (cf. page 1)

If components are damaged they can be replaced by request.

Order form end of this chapter.

Model:	05 50 59 28	Square
Description:	Square for fixing the track to a L-shaped ceiling	



Finish: glass bead or brushed

Screws (ceiling):

Threaded rod Ø 8
supplied by SADEV.
Anchor to be defined
according to the nature
of the wall (not supplied
by SADEV)

Fitting or fixings on the
wall by 2 screws on the
square

Fitting compatibility:

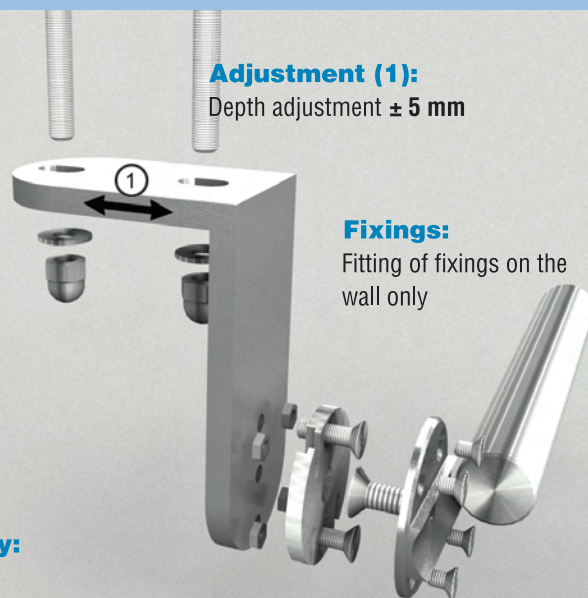
Refer to the table below

Adjustment (1):

Depth adjustment ± 5 mm

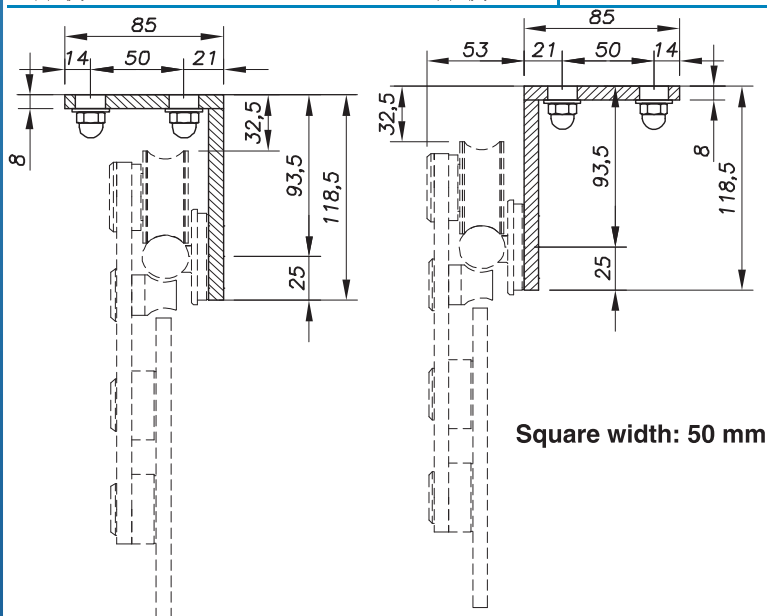
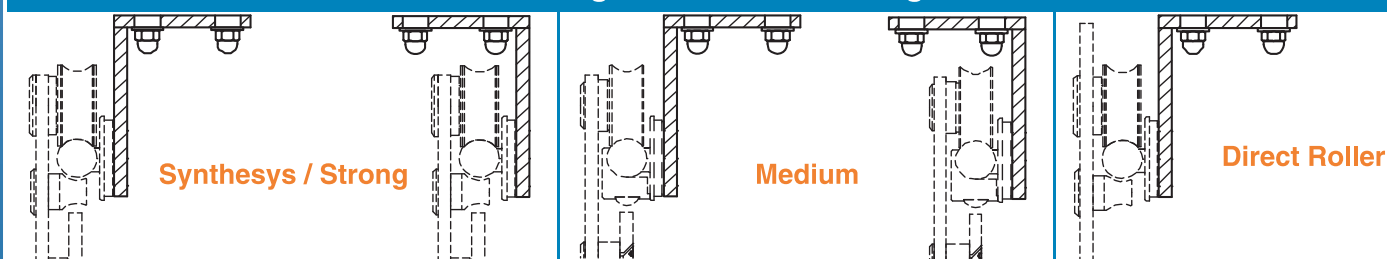
Fixings:

Fitting of fixings on the
wall only

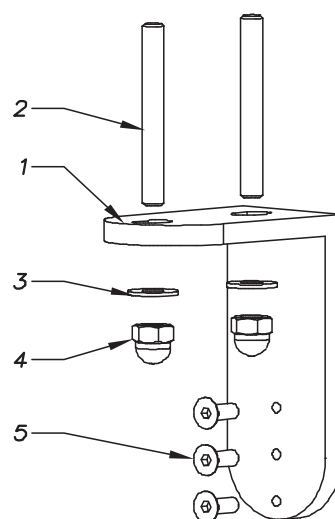


Compatible sliding family	Type of track fixing	Reference
Synthésys, Strong sliding & Direct Roller sliding	Fixing on wall by rear	05 51 58 50
Medium sliding	Fixing by gripper on wall	05 52 58 50

Arrangement of track fixings



Square width: 50 mm



Description

- Square (1)
- Threaded rod Ø 8 (2)
- Washers (3)
- Locking nut (4)
- Fixing screw (5)

Weight: 585 g

Reference	05 50 59 28	lead time (cf. Page 1)		
		Qty<5	5<Qty<10	10<Qty

If components are damaged they can be replaced by request.

Order form end of this chapter.

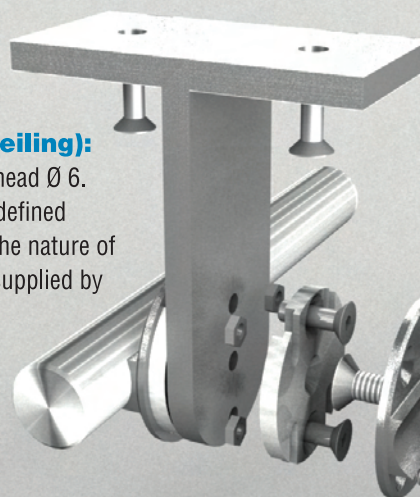
Model:	05 50 59 30	Square
Description:	Square for fixing the track to a T-shaped ceiling	



Finish: glass bead or brushed

Screws (ceiling):

Countersunk head Ø 6.
Anchor to be defined according to the nature of the wall (not supplied by SADEV)



Fixings:

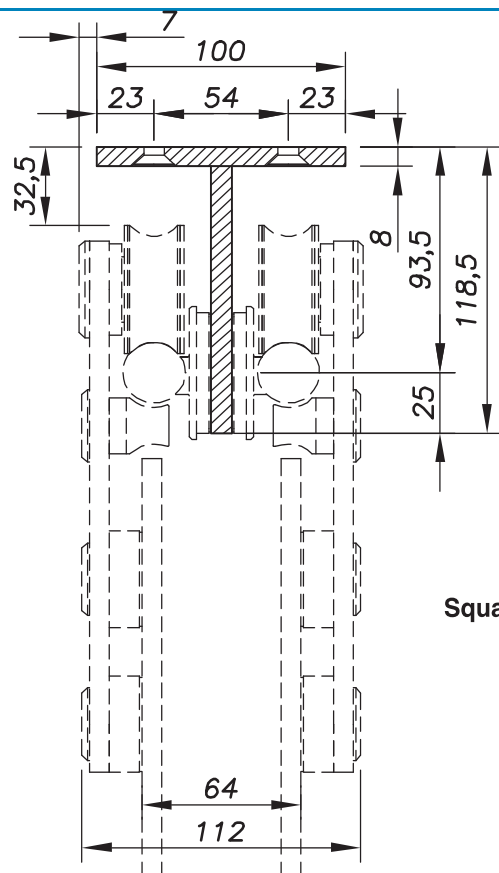
Fitting of fixings on the wall only

Fitting compatibility:

Refer to the table below

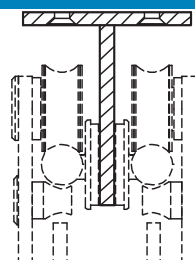
Fitting of fixings on the wall by 2 screws on the square

Compatible sliding family	Type of track fixing	Reference
Synthésys , Strong sliding & Direct Roller sliding	Fixing on wall by rear	05 51 58 50
Medium sliding	Fixing by gripper on wall	05 52 58 50

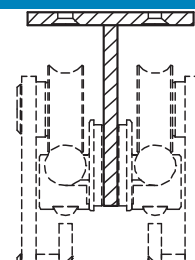


Square width: 50 mm

Arrangement of track fixings



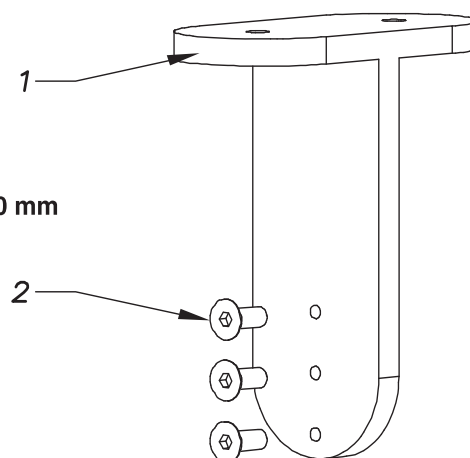
Synthésys/ Strong & Direct Roller



Medium

Description

Square (1)
Fixing screw (2)



Weight: 620 g

Reference	05 50 59 30	lead time (cf. Page 1)		
		Qty<5	5<Qty<10	10<Qty

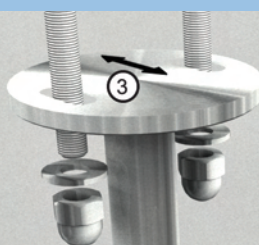
If components are damaged they can be replaced by request.

Order form end of this chapter.

Model:	05 50 59 32	Fixing plate on ceiling
Description:	Cylindrical fixing plate on ceiling	



Finish: glass bead or brushed

**Screws (ceiling):**

Threaded rod Ø 8 supplied by SADEV. Anchor to be defined according to the nature of the wall (not supplied by SADEV)

Fixings:

Fitting of fixings on the wall only

Adjustment (1):

Adjustment of +/- 5 mm by height

Compatibility:

Refer to the table below

Adjustment (2):

Synthésys / Strong / direct
Adjustment by +/- 10mm

Medium: no limit

Family	Description	Fixing reference
Synthésys, Strong sliding & Direct Roller sliding	Fixing on wall by rear	05 51 58 50
Medium sliding	Fixing by gripper on wall	05 52 58 50

Synthésys / Strong / Direct	Medium	Plate
		<p>Threaded plate-fixing rods: Ø M8 x 70 mm</p>
<div> Description <ul style="list-style-type: none"> 1 Threaded rod Ø8 2 Fixing screw 3 Plate 4 Washers 5 Nuts 6 Centre link 7 Threaded rod 8 Fixing body 9 Fixing screw <p>Weight: 650 g</p> </div>		
Reference	lead time (cf. Page 1)	
05 50 59 32	10<Qty	10<Qty

If components are damaged they can be replaced by request.

Order form end of this chapter.

Model:	05 51 58 50 RL	Fixing on wall by rear
Description:	Track attachment from the rear on binding glass	



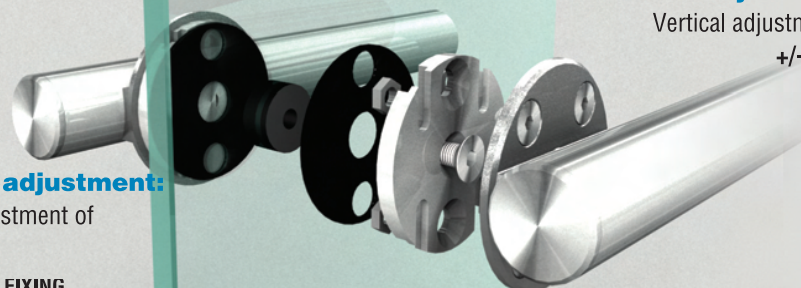
Finish: glass bead or brushed

With this fixing,
the track is drilled

Horizontal adjustment:

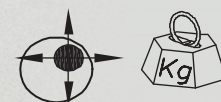
Horizontal adjustment of
+/- 10 mm

**WARNING – THE FIXING
MUST BE IN THE RIGHT
DIRECTION**



Vertical adjustment:

Vertical adjustment of
+/- 4 mm



150 kg

Glass drilling details below

Recommendation / use

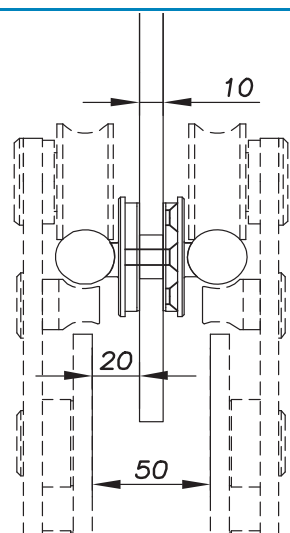
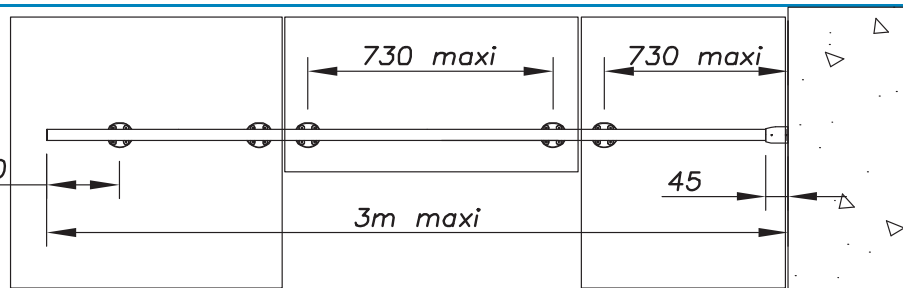
Glass thickness: 8 to 12 mm standard.
Consult us for other dimensions

Tightening of the glass screws: Monolithic
tempered = Min. 15 N.m / Laminated tempered = 5 N.m

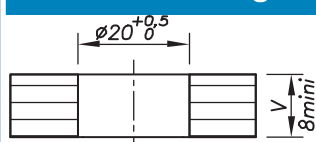
Arrangement of fixings

**2 fixing points min.
per glass panel**

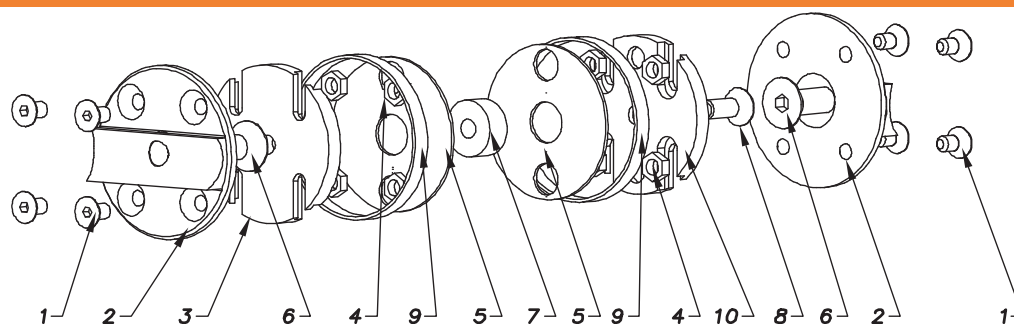
maxi 150
mini 50



Glass drilling



Always state the glass thickness when ordering



Compatible

Strong sliding

Direct roller sliding

Synthésys sliding

Reference

Description

Adjusting screw (1)	Protection ring (7)
Fixing of track by rear (2)	Binding fixing screw (8)
Fixing body for wall (3)	Elastic (9)
Locking nut (4)	Threaded body (10)
EPDM washer absorber (5)	
Assembly screw (6)	

Weight: 270 g

lead time (cf. page 1)

05 51 58 50 RL

Qty<10

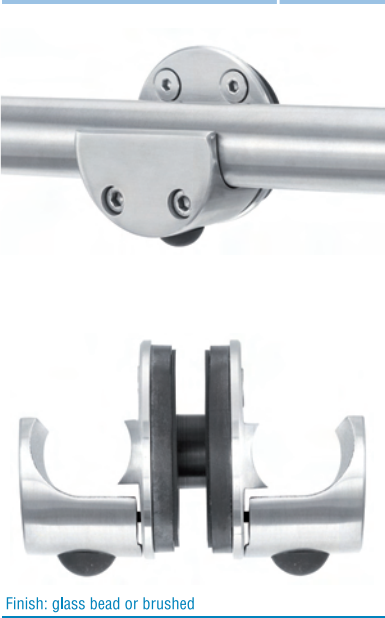
10<Qty<20

20<Qty

If components are damaged they can be replaced by request.

Order form end of this chapter.


Model:	05 52 58 50 RL	Gripped binding fixing
Description:	Track fixing by gripper on binding glass	



With this fixing, the track is not drilled

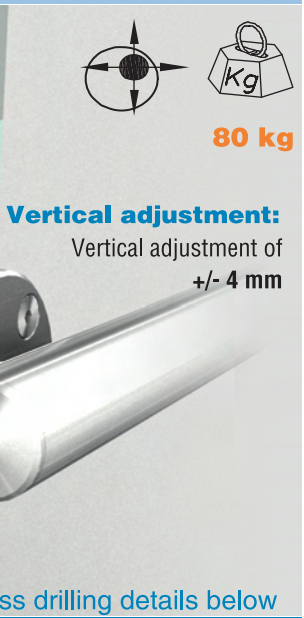
Horizontal adjustment:
Free horizontal adjustment

Finish: glass bead or brushed



Vertical adjustment:
Vertical adjustment of +/- 4 mm

Glass drilling details below



80 kg

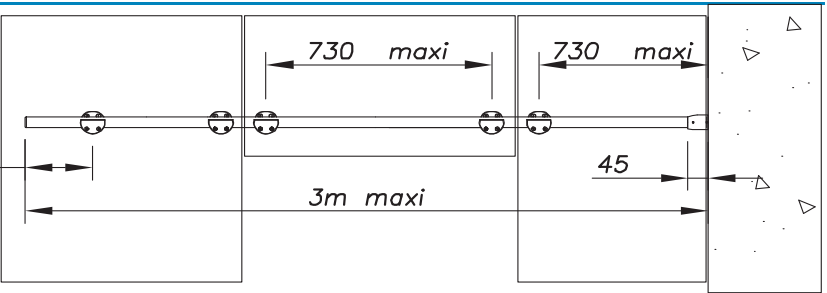
Recommendation / use

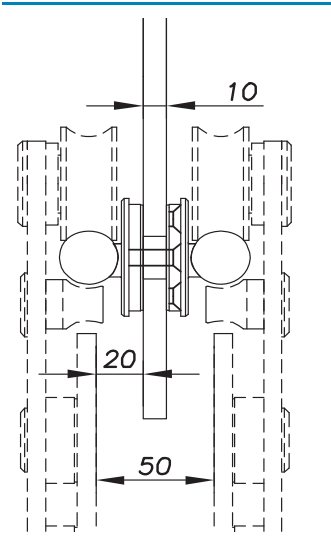
Glass thickness: 8 to 12 mm standard.
Consult us for other dimensions

Tightening of the glass screws: Monolithic tempered = Min. 15 N.m / Laminated tempered = 5 N.m

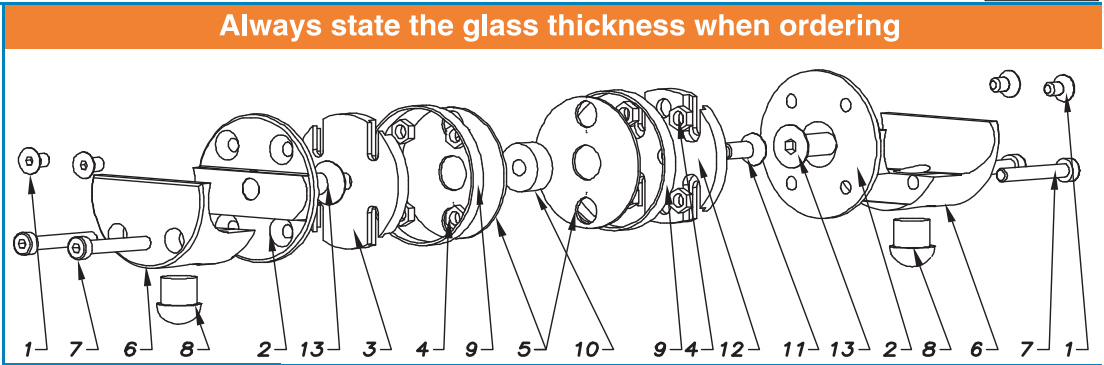
Arrangement of fixings

2 fixing points min. per glass panel

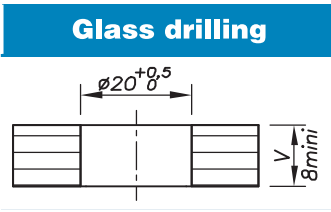




Always state the glass thickness when ordering




Compatible	Description	
Medium sliding only	Adjusting screw (1)	Tightening screw (7)
	Track attachment from the rear (2)	Anti-jump (8)
Weight	Fixing body for wall (3)	Elastic (9)
	Locking nut (4)	Protection ring (10)
Weight: 520 g	EPDM washer absorber (5)	Fixing screw (11)
	Gripper (6)	Threaded body (12)
Reference	05 52 58 50 RL	
	lead time (cf. page 1)	
		Qty<10 10<Qty<20 20<Qty



Glass drilling

If components are damaged they can be replaced by request.
Order form end of this chapter.

Model:	05 52 69 50	Fixing for false ceiling
Description:	Fixing of single Medium “false ceiling” sliding	



Screws (ceiling):
Threaded rod Ø 12 supplied by SADEV.
Anchor to be defined according to the nature of the wall (not supplied by SADEV)

Adjustment (3):
The hidden washer is adjusted on the track in contact with the false ceiling

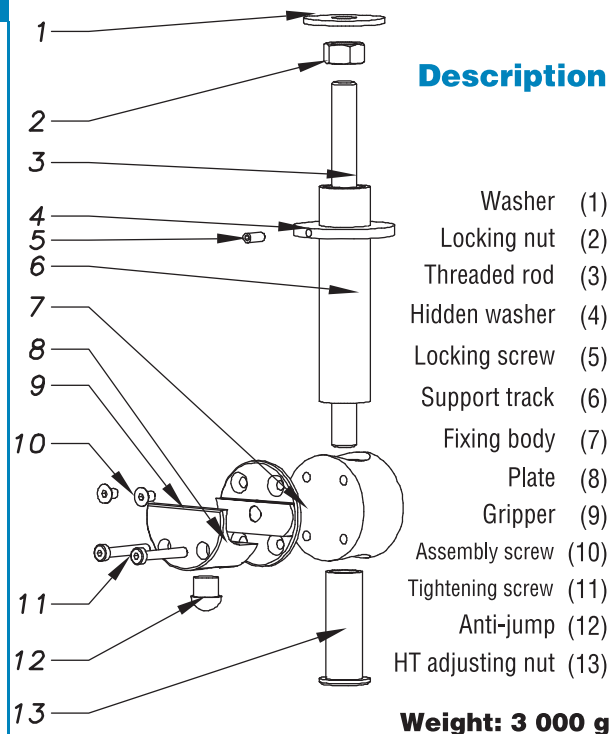
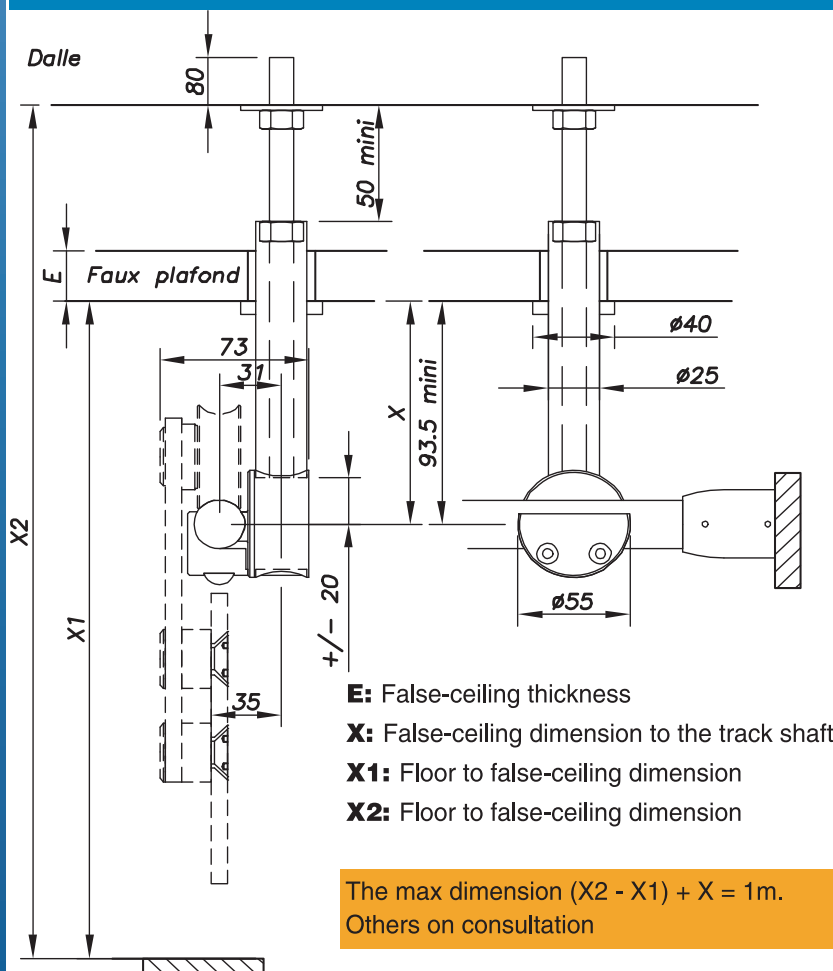
Adjustment (2):
The adjustment (1) is by screwing in or out following (2)

Adjustment (1):
Vertical adjustment of +/- 20 mm

Warning:
Movements along the track must be stopped by a sleeve or a fixing on the wall or glass

Finish: glass bead or brushed

Arrangement of fixings / large dimensions



Reference	lead time (cf. page 1)	Qty<10
05 52 69 50		10<Qty<30
		30<Qty

If components are damaged they can be replaced by request.
Order form end of this chapter.

Model:	05 52 69 52	Fixing for false ceiling
Description:	Fixing of double Medium "false ceiling" sliding	

Screws (ceiling):

Threaded rod Ø 12 supplied by SADEV.
Anchor to be defined according to the nature of the wall (not supplied by SADEV)

Adjustment (3):

The hidden washer is adjusted on the track in contact with the false ceiling

Adjustment (2):

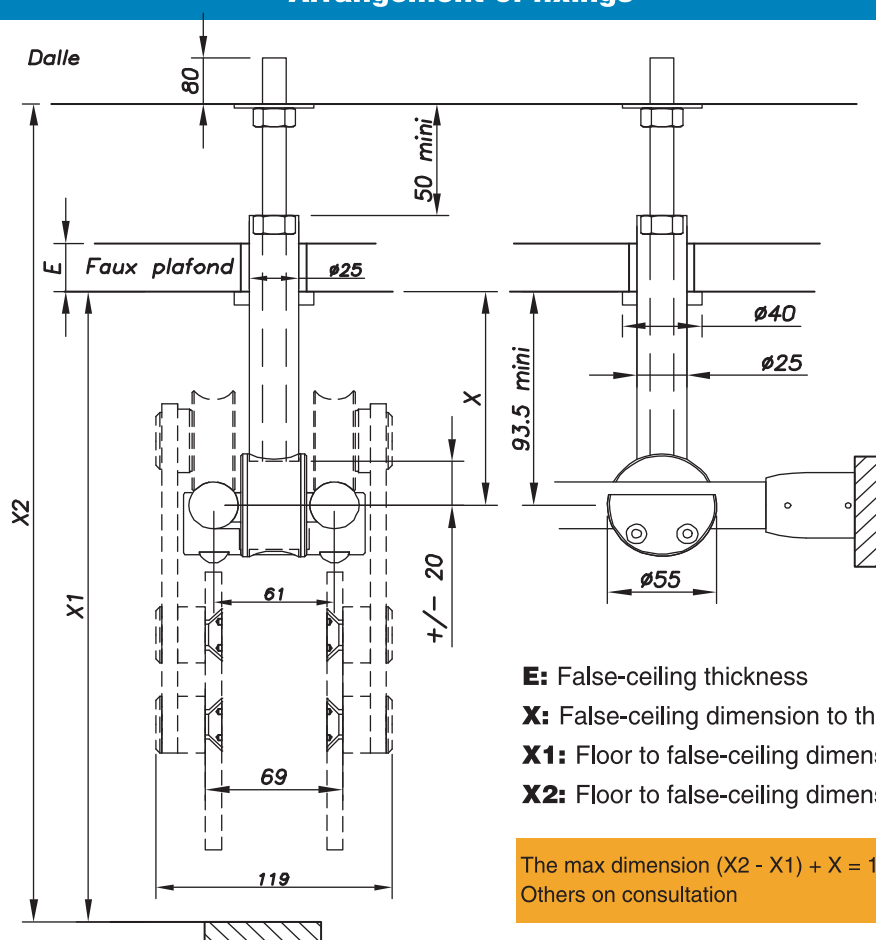
The adjustment (1) is by screwing in or out following (2)

Adjustment (1):

Vertical adjustment of ± 20 mm

Warning:

Movements along the track must be stopped by a sleeve or a fixing on the wall or glass

Arrangement of fixings

E: False-ceiling thickness

X: False-ceiling dimension to the track shaft

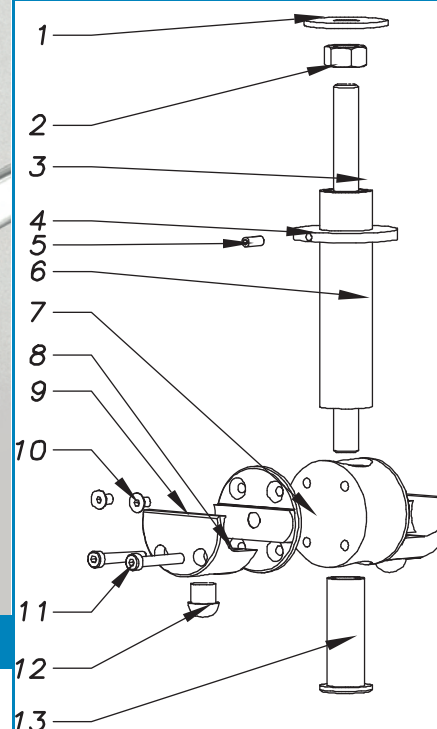
X1: Floor to false-ceiling dimension

X2: Floor to false-ceiling dimension

The max dimension $(X2 - X1) + X = 1$ m.
Others on consultation

Compatible

Medium sliding only for the single or double models

**Description**

- Washer (1)
- Locking nut (2)
- Threaded rod (3)
- Hidden washer (4)
- Locking screw (5)
- Support track (6)
- Fixing body (7)
- Plate (8)
- Gripper (9)
- Assembly screw (10)
- Tightening screw (11)
- Anti-jump (12)
- HT adjusting nut (13)

Weight: 3 300 g

Reference

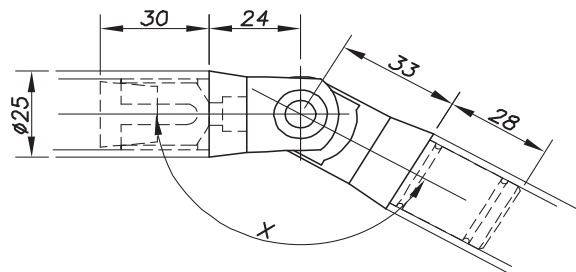
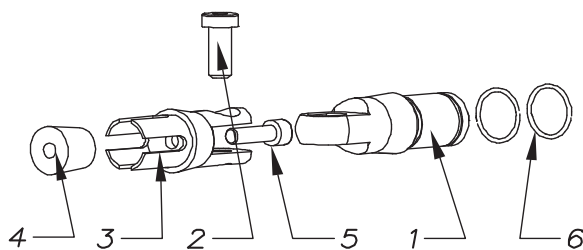
05 52 69 52

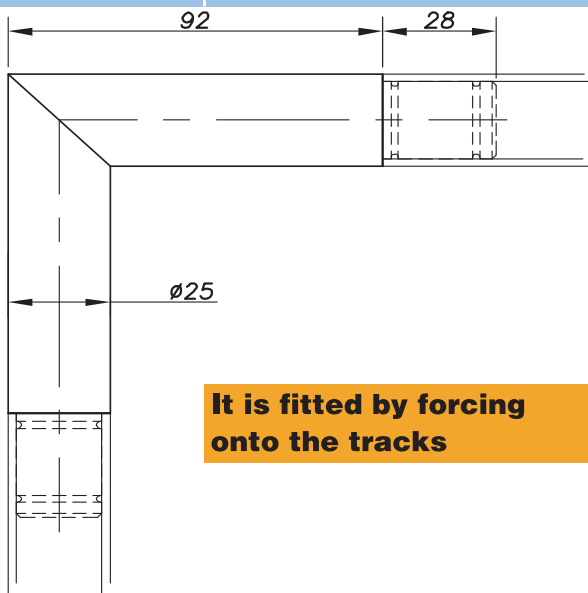
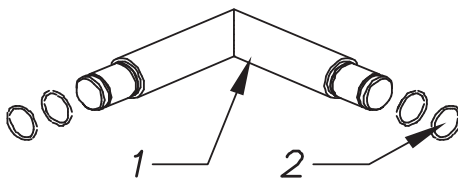
lead time (cf. page 1)

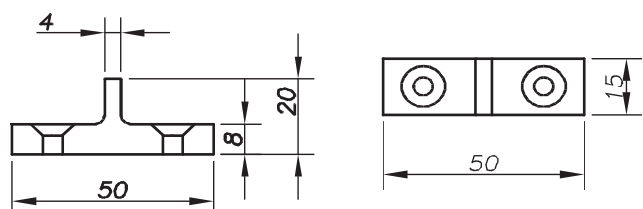

Qty<10	10<Qty<30	30<Qty
--------	-----------	--------

If components are damaged they can be replaced by request.

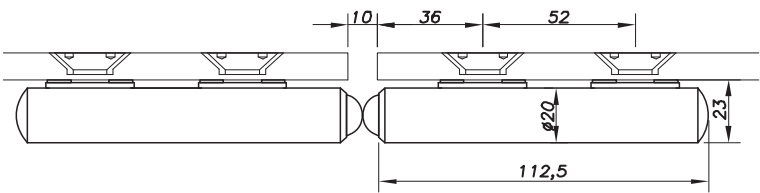
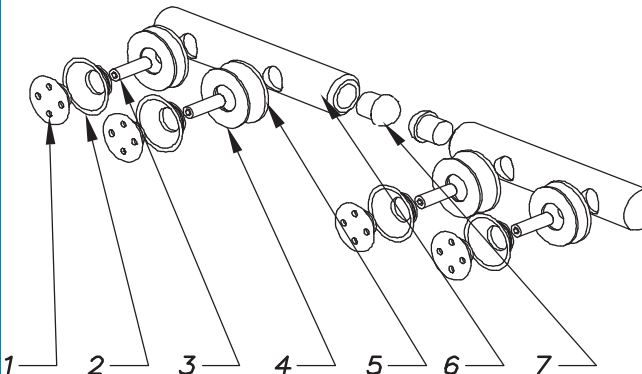
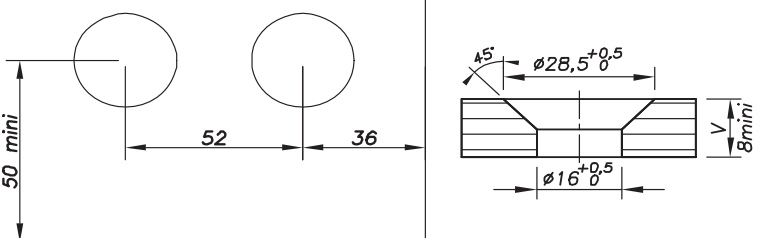
Order form end of this chapter.

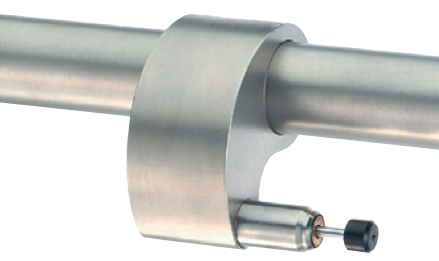
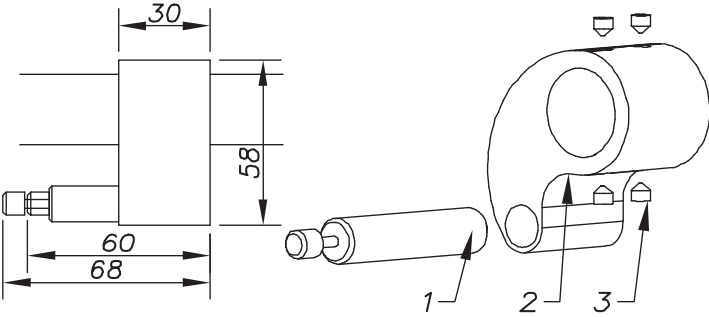
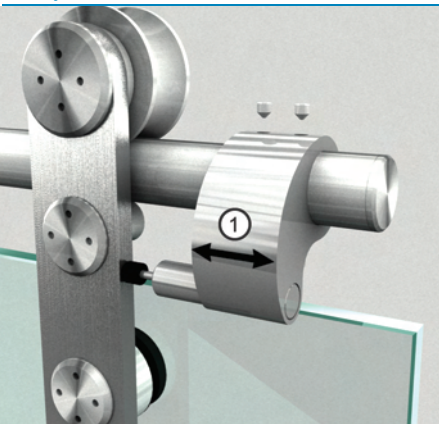
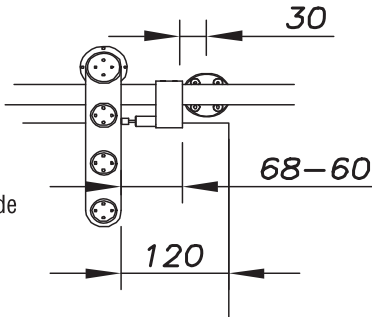
Model:	07 05 02 21 50		
Description:	Adjustable angle track-to-track connector		
			
Reference	07 05 02 21 50		
lead time (cf. page 1)			
Qty<5	5<Qty<10	10<Qty	
			
<div>Description</div> <div><div>JT male sleeve 1)</div><div>Locking screw 2)</div><div>Female sleeve 3)</div><div>Expandable inserts 4)</div><div>Expansion screw 5)</div><div>Seal 6)</div></div> <div>Weight: 270 g</div>			

Model:	07 05 02 29 50		
Description:	Fixed 90° track-to-track connector		
<div></div>			
<div><div><div>Description</div><div>90° sleeve 1) O-ring 2)</div><div>Weight: 770 g</div></div></div>			
Reference		07 05 02 29 50	
lead time (cf. page 1)			
Qty<5	5<Qty<10	10<Qty	

Model:	05 56 54 50		
Description:	Double door anti-shock on floor		
		<div><div>Description</div><div>Anti-shock 1)</div><div>Weight: 35 g</div><div><p>It can slide in a stainless steel floor track. Refer to the accessories section of this catalogue</p></div></div>	
Reference	05 56 54 50	lead time (cf. page 1)	
		Qty<5	5<Qty<10
			10<Qty

If components are damaged they can be replaced by request.
Order form end of this chapter.

Model:	05 56 54 52		
Description:	Dual door anti-shock on door		
			
Glass drilling		Description	
		Tightening screw 1) Spacer 5) Protection ring 2) Body 6) Threaded shaft 3) Absorber 7) Protective washer 4)	
Glass thickness (mm)		Reference	
8 to 12		05 56 54 52	
Other glass thickness on order		lead time (cf. page 1)	
		Qty<5	5<Qty<10
		10<Qty	

Model:	05 55 56 51		
Description:	Hydraulic door stop		
			
Description		Absorber (1) Body (2) Screw (3)	
		Weight: 329 g	
Adjustment (1): Adjustment on track for closing position			
Door stop: The door stop is in contact with the sliding roller side and not with the glass			
Reference		05 55 56 51	
		lead time (cf. page 1)	
		Qty<10	10<Qty<30
		30<Qty	

If components are damaged they can be replaced by request.

Order form end of this chapter.