

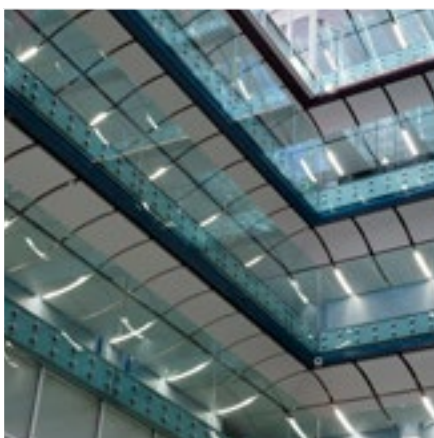
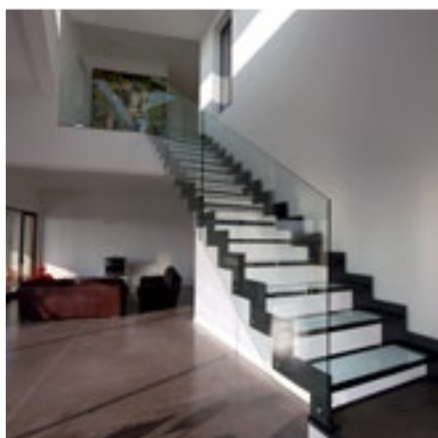


# BALUSTRADES

Products and accessories

**SADEV**<sup>®</sup>  
ARCHITECTURAL GLASS SYSTEMS

[www.sadev.com](http://www.sadev.com)



## SADEV® BALUSTRADE BETWEEN DESIGN & SECURITY

The glass balustrade is a trendy and popular product, which is suitable for a multitude of applications. The glazed balustrades are used to secure a balcony, a terrace of a house, as well as staircases, or stadium stands.

In its search for constant innovation, SADEV has developed a line of transparent glass railings solutions. The latest in this line is the base profile for glass balustrades. Every profile has been validated by the French Avis Technique 2/15-1673, and the British Standard BS EN 6180:2011.

**SADEV** has the technical and aesthetic solution for all your glass balustrade projects.

WELCOME  
TO **SADEV®**  
BALUSTRADE  
UNIVERSE

**SADEV® BALUSTRADES**

# TABLE OF CONTENTS

Balustrades Summary ..... p. 2 to 3  
Regulatory Context ..... p. 4  
Tests performed ..... p. 5  
Features ..... p. 6 to 7

**SABCO® BALUSTRADES**

- Floor mounting Kit ..... p. 8 to 11
- Lateral mounting Kit ..... p. 12 to 15
- Built-in-slab Kit ..... p. 16 to 19
- Offset lateral mounting kit ... p. 20 to 23
- Offset floor mounting Kit. .... p. 24 to 25

**OTHER RAILINGS SYSTEMS**

- Wall Point Fixings ..... p. 26 to 27
- Flat railings Posts ..... p. 28 to 29
- Flat Glass Connectors Posts. p. 30 to 31
- “Shark Fin” Posts ..... p. 32 to 33
- Glass Clamps ..... p. 34 to 35

**ACCESSORIES**

- Hand Rails ..... p. 36 to 41



SADEV® BALUSTRADES





## WHICH SYSTEM FOR YOUR PROJECT?

For the installation of your glass balustrade, Sadev is able to offer you a large choice of systems. The surface where the balustrade will be installed will also affect the choice of solution, as well as the type of application (private, public, stadium, etc.) and, finally, the type of installation (floor mounting, lateral, built-in-slab, etc.).





The Sadev railing systems have been developed to meet even the most stringent legislation. They have all been tested and several are covered by Avis Technique.

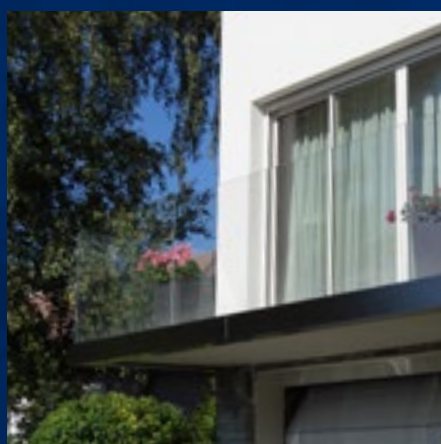
The tables below will help you identify rapidly the system that best fits your project.

Each specific requirement for the project has a product validated by testing or an Avis Technique.

BALUSTRADE	SABCO® Floor mounting 00 70 10	SABCO® Lateral mounting 00 70 11	SABCO® Built-in-slab 00 70 12	SABCO® Lateral mounting, offset fixing 00 70 13
PAGES	p. 8 to 11	p. 12 to 15	p. 16 to 19	p. 20 to 22
MODEL				
CATEGORY	RESIDENTIAL AREAS	✓	✓	✓
	PUBLIC AREAS	✓	✓	✓
	AREAS SUSCEPTIBLE TO OVERCROWING	✓		✓

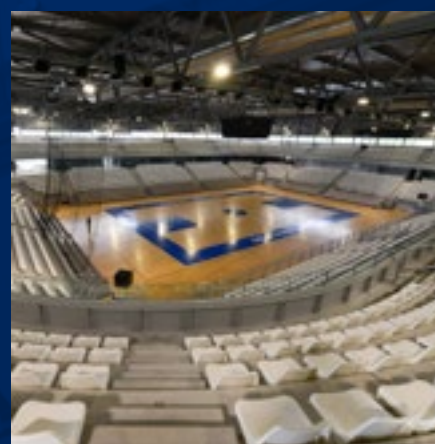
BALUSTRADE	WALL POINT FIXINGS	FIN MONTI RAILINGS	FLAT RAILINGS POST	SHARK FIN POST
PAGES	p. 26 to 27	p. 28 to 29	p. 30 to 31	p. 32 to 33
MODEL				
CATEGORY	RESIDENTIAL AREAS	✓	✓	✓
	PUBLIC AREAS	✓	✓	✓
	AREAS SUSCEPTIBLE TO OVERCROWING	✓		



## RESIDENTIAL AREAS



## PUBLIC AREAS



## AREAS SUSCEPTIBLE TO OVERCROWING

French  
Avis Technique

**Design Loads :** 0,6 kN/m - 1,8 kN/m  
**Areas A & B**  
according to NF EN 1991-1 and 1991-2

**Design Loads :** 1,0 kN/m - 3,0 kN/m  
**Areas C1, C2, C3, C4 & D**  
according to NF EN 1991-1 and 1991-2

**Design Loads :** 1,7 kN/m - 5,1 kN/m  
**Stadium Stands**  
according to NF P06-001

British  
standard

**Design Loads :** 0.22 / 0.36 kN/m  
**Areas A&B**  
according to BS EN:6180:2011

**Design Loads :** 0.74 kN/m  
**Areas C3**  
according to BS EN 6180:2011

**Design Loads :** 1.5 kN/m  
**Areas C1 / C2 / C5 & D**  
according to BS EN 6180:2011

SADEV® BALUSTRADES

## REGULATORY CONTEXT

### AVIS TECHNIQUE

The Avis technique is the ultimate validation on the French market, certifying a level of quality in the proper use on the project.

The document issued by the CSTB expresses approval (based on the French regulatory requirements) by a specialized French group. It concerns the suitability of a product or system to be used in construction.

**SABCO®** is validated by the Avis technique n° 2/15-1673.



### BRITISH STANDARD

In several countries including the United Kingdom, a code of practice (BS EN 6180:2011) defines the requirements of a balustrade system that is used for the production and guidance of persons.

**SABCO®** passed the tests required to fulfill to the BS rules for floor & lateral mounting. Glass sizes & types validated are indicated on pages 9 and 13.

### SABCO VALIDATIONS' OVERVIEW

The following table presents the validations & documents available in each country.

	Legislation Ref.	Tests required	Certificate Sadev
	3034 CSTB	- Static - Dynamic	- ATEC - Tests Report
	BS6180:2011	- Static	- Tests Report
	NEN2608:2014 NEN6702	- Dynamic - Calculation	- Tests Report
	ABP ABZ	- Dynamic - Calculation	- AbP - Calculation note for each project
	NBN B03-004 Pr NBN	- Dynamic - Calculation	- Tests Report
	CNR-DT210/213	- Dynamic - Calculation	in progress
		- Static	in progress
		- Static	in progress
	SIA261	- Dynamic	Test reports calculation

SADEV® BALUSTRADES

## TESTS PERFORMED



### FRENCH TESTS (cahier 3034)

#### STATIC TEST

##### Inward Horizontal Load:

static load is applied on the top edge of the glass inward.

##### Outwards Horizontal Load:

- Verification under service load (SLS\*): test by serviceable load outwards. This load is applied on the top edge of the glazing at 1.1 m above the "finished floor". The deflection of the glass should be no greater than 35mm at any point.

- Verification under safe load (ULS\*\*): The glass is subjected for 15 minutes to a safe load directed from the inside to outside, equal to 3 times the service load.

#### DYNAMIC TESTS

**Impact performance:** by pendulum test by hard body (steel ball) of 3J energy.

**Ultimate impact:** by pendulum test by soft body (sand bag) of 900J energy. By hard body of 10J.

\* SLS: Serviceability limit state

\*\* ULS: Ultimate limit state

### BRITISH STANDARD TESTS

The height of the spreader bar is adjusted to 1100 mm above finished floor level.

#### 3 tests loads are assessed:

a line load of 0.74, 1.5 and 3kN/m run.

In each case, the load applied is appropriate to the requirements of the BS EN 6180:2011.

The deflection of the glass should be no greater than 25mm at any point. Instantaneous deflection results were recorded, along with the creep over 5 minutes.

# SABCO® BALUSTRADES

## OVERVIEW

### Advantages

- Under French Avis Technique glass + profile
- Very fast mounting and adjustment
- Weight gain for Public and Stadium applications
- Ultimate transparency
- No drilling of the glass
- Profile suitable for resurfacing and floor finish
- Fixing points suitable every 400 mm
- Achievement of curved railing
- All mounting types available (Floor mounting, lateral, built-in-slab)

### Characteristics

- Dimensions  
Maximum height: 2 100 mm  
Maximum width: 2 500 mm  
According to the countries' legislations.
- Length of profiles:  
2 500 mm, or 5 000 mm upon request
- Thickness of glass 15, 8.8, 10.10, 12.12
- Standard finish:  
Natural Aluminium
- Other finishes:  
Aluminium with brushed stainless steel aspect, or painted on RAL colors upon request
- Profile drilled every 200 mm

### Applications

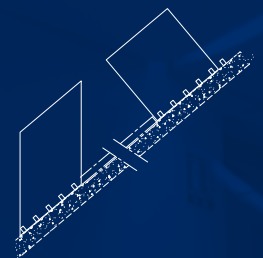
- Indoor and/or outdoor use
- Private applications:  
balconies, stairs, edges of roofs...
- Public applications:  
shopping malls, railway stations, airports, rental housing...
- Applications on stadiums:  
gyms, stadium stands
- Privacy screen, windbreak

## FEATURES



### Incline

The **SABCO** system fits balustrades up to a 40° incline from horizontal. Different types of mounting are possible. The clamping remains identical to horizontal mounting.



### Curved

The **SABCO** system fits curved balustrades according to the specifications defined by **SADEV**.

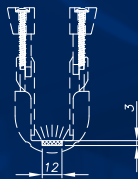
The bending is possible starting from a 1 m minimum radius. Tests were carried out to validate its performance in the most unfavourable case (1 m radius, concave and convex direction test, glass height 1.192 m and a 1 000 mm development).





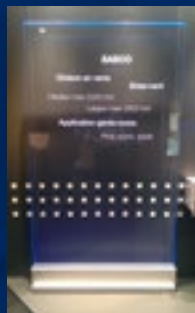
## LED

The **SABCO** system is suitable for LED lighting integration.



## Tall Applications

The **SABCO** system is suitable for balustrades up to 2.1 m high.

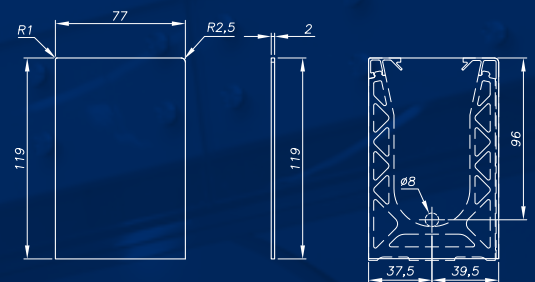


## Drainage

Water drainage is carried out at each end of the profiles. The profile must be level mounted and without sagging, the water can be evacuated on both sides of the profile.

Ø 8 mm holes can be drilled on site in the stopper and/or in the profile for the water evacuation, after case.

In case of engraved railings, the concrete rabbet drainage must be ensured if the profile is installed outside.



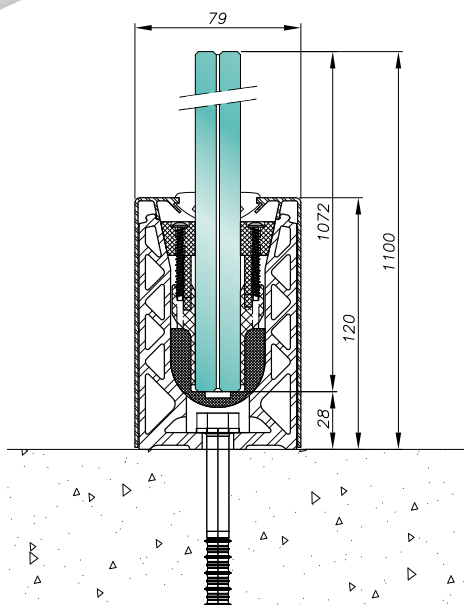
“INSTALL, IT FITS”

**SABCO**<sup>®</sup> floor mounting



**00 70 10**

*Avis Technique n°2/15-1673*



## Ground fixing

*Profile fixing suitable every 400 mm\**

**Applications:** private / public / stadium

**Glass thickness:** from 15 to 25.52 mm according to the application

- Very fast installation: simple adjustment thanks to the patented clamps, no other actions except tightening.
- All glass types and sizes tested (tempered / not tempered). All the interlayers.
- Adjustment of the glass alignment of + or - 15 mm at 1.10 m.
- Maximum glass length is 2.50 m and height is 2.10 m for a windbreak and railing function.
- Integrated drainage system.
- No specialized tools required.
- Various cladding configurations are available. Please refer to page 10.

*\*see the following page.*



## PERFORMANCES & LOADS

	AVIS TECHNIQUE (FR 3034)			BRITISH STANDARD 6180			
	900 joules			No test required			
Dynamic test							
Statical load	0,6 to 1,8 kN	1 to 3 kN	1,7 to 5,1 kN	0,36 kN	0,74 kN	1,5 kN	3 kN
Hole fixing distance	400 mm	400 mm	200 mm	400 mm	400 mm	400 mm	200 mm
<b>Glass</b>	15 monolithic			4 w/m	4 w/m		Upon request
	8.8.2 PVB tempered	4 w/m		4 w/m			
	8.8.2 EVA tempered	4 w/m		4 w/m			
	8.8.2 Trosifol ES tempered	4 w/m	4 w/m	4 w/m	4 w/m		
	8.8.2 DG41 tempered	4 w/m	4 w/m	4 w/m	4 w/m		
	8.8.2 SGP tempered	4 w/m	4 w/m	4 w/m	4 w/m		
	10.10.4 PVB tempered	4 w/m	4 w/m	4 w/m	4 w/m		
	10.10.2 EVA tempered	4 w/m	4 w/m	4 w/m	4 w/m	4 w/m	
	10.10.2 Trosifol ES tempered	4 w/m	4 w/m	5 w/m	4 w/m	4 w/m	
	10.10.2 DG41 tempered	4 w/m	4 w/m	5 w/m	4 w/m	4 w/m	
	19 monolithic			4 w/m	4 w/m	4 w/m	
	10.10.2 SGP tempered	4 w/m	4 w/m	5 w/m	4 w/m	4 w/m	
	10.10.2 SGP not tempered	5 w/m		4 w/m	4 w/m		
	12.12.2 SGP not tempered	5 w/m		4 w/m	4 w/m	4 w/m	
	12.12.4 PVB tempered	4 w/m	4 w/m	5 w/m	4 w/m	4 w/m	
12.12.2 EVA tempered	4 w/m	4 w/m	5 w/m	4 w/m	4 w/m		

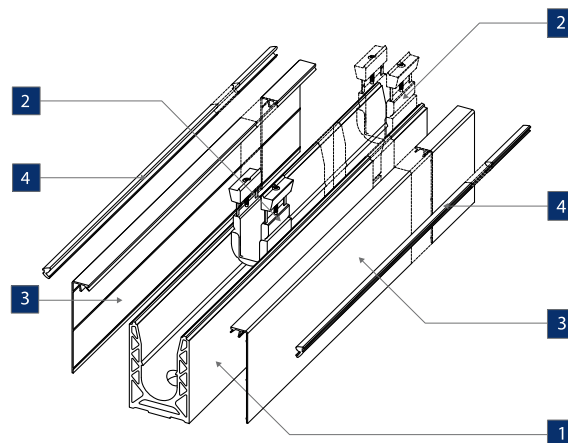
Under Avis Technique
  AT Rated satisfactory
  Under British Standard
  BS Rated satisfactory
  Not rated satisfactory

## FLOOR MOUNTING KIT

The **SABCO** profile, floor mounting is available in a kit, you can also order other accessories separately (see the following page).

### In the kit:

- 1 Profile (2 500 mm)
- 2 Wedges (one box)
- 3 Low cladding (2x 2 500 mm)
- 4 Seals (2x 2 500 mm)



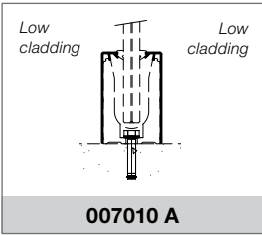
### Example of construction of the Reference in your kit:

Reference	Glass	Number of wedges	Finish*
00 70 10	15	4C	01 (Natural Aluminium)
	08 08		02 (Brushed Stainless Steel)
	10 10	5C	03 (RAL aluminium)
	12 12		

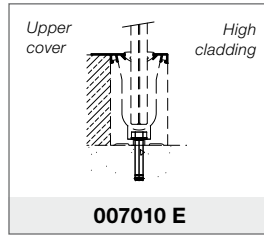
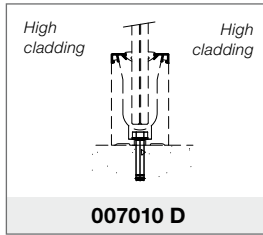
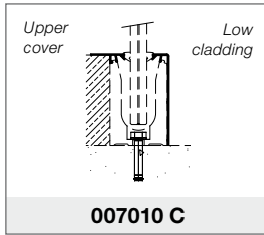
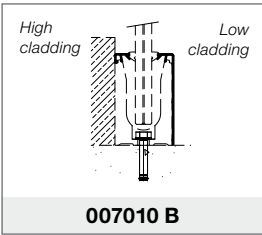
007010: SABCO profile on floor fixing > 12 12: thickness of your glass panel > 4C: number of wedges (see above table) > 01: Natural Aluminium Finish = Reference: 007010 1212 4C 01

# CLADDING CONFIGURATIONS AVAILABLE

## STANDARD



## SPECIAL



## A COMPLETE LINE OF HAND RAILS TO COMPLETE THE INSTALLATION (see p. 32)



## HOW TO MOUNT YOUR SABCO® IN 7 STEPS

Step 01



Mount the rail



Step 02



Install the U wedges



Step 03



Install the glass



Step 04



Simultaneously adjust vertical alignment and tighten clamp



Step 05



Attach the profile covers

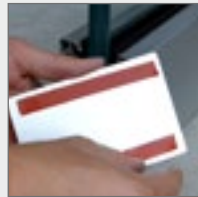
Step 06



Press in the seals



Step 07



Install the end caps



Consult the SABCO mounting video by scanning this code:






## DETAIL OF THE ACCESSORIES INCLUDED IN THE KIT

### WEDGES TABLE

The wedges are provided with the Kit. The usage of wedges is directly connected to the size of your glass panels.

Refer to the instructions to calculate the exact number of wedges.

Color	Glass	Glass thickness [min ; max]	Reference (box with 10 wedges)
White 	08 08	$16,76 \begin{smallmatrix} 0 \\ -0,5 \end{smallmatrix}$ [16,26 ; 16,76]	00709KIT10CALE0808
		$17,52 \begin{smallmatrix} 0 \\ -0,5 \end{smallmatrix}$ [17,02 ; 17,52]	
Green 	10 10	$20,76 \begin{smallmatrix} 0 \\ -0,5 \end{smallmatrix}$ [20,26 ; 20,76]	00709KIT10CALE1010
		$21,52 \begin{smallmatrix} 0 \\ -0,5 \end{smallmatrix}$ [21,02 ; 21,52]	
		$20,64 \begin{smallmatrix} 0 \\ -0,5 \end{smallmatrix}$ (13/16") [20,14 ; 20,64]	
Yellow 	12 12	$24,76 \begin{smallmatrix} 0 \\ -0,5 \end{smallmatrix}$ [24,26 ; 24,76]	00709KIT10CALE1212
		$25 \begin{smallmatrix} 0 \\ -0,5 \end{smallmatrix}$ [24,5 ; 25]	
		$25,52 \begin{smallmatrix} 0 \\ -0,5 \end{smallmatrix}$ [25,02 ; 25,52]	

### THE LOW CLADDING



They cover the **SABCO** profile and adjust to their environment thanks to different finishes.

++ Finishes, clipped and pasted fastening

#### Material

Natural Aluminium

Alu, St. steel Effect

RAL Aluminium

#### Reference

007090CAPO01

007090CAPO01AB

007090CAPO01P

### END CAPS



They are fastened on the profile and adjust to their environment thanks to different finishes.

++ Finishes, design

#### Material

Natural Aluminium

Alu St. steel Effect

RAL Aluminium

#### Ref. Ground

0070CE10-01A

0070CE10-02A

0070CE10-03A

#### Ref. Slant

0070CER10-01A

0070CER10-02A

0070CER10-03A

### THE SEALS



Help protecting the profile from dust and water.

++ Waterproof, finish

#### Glass

08 08

10 10

12 12

#### Reference

007090JOINT0808 (grey)

007090JOINT1010 (black)

007090JOINT1212 (black)

### SPACERS



Help maintaining a regular space interval between the glass panels.

++ Waterproof, 5 mm width

#### Glass

08 08

10 10

12 12

#### Reference

007090ESPAC0808

007090ESPAC1010

007090ESPAC1212

### ALIGNMENT PINS



The pins allow assembling the rails together.

++ Save time, Alignment

#### Reference

D1481A2-8-50

### TORX BIT



It allows tightening the glass in the wedges.

++ Ease of operation, practical, good tightening performance, tamperproof

#### Reference

007-TORX-T20/150

### SCREW / WALL PLUG



Anchor for floor mounting; depends on the class of concrete.

#### Designation

Box of 50 galvanized steel screws for concrete

Box of 25 stainless steel screws for concrete

Box of 40 galvanized steel mechanical wall plugs

#### Reference

09HUS3-H10X70

09HUS-HR10X75

09HSLM8/20

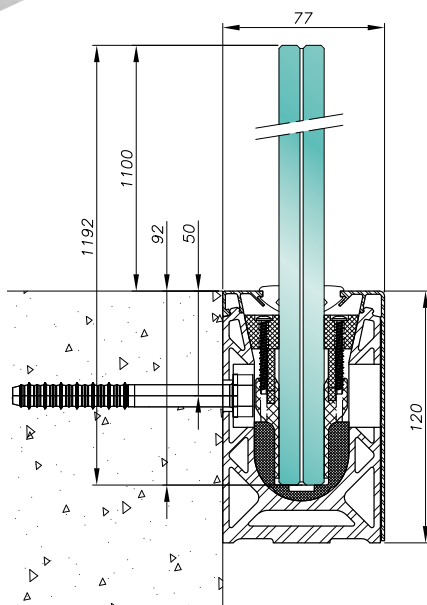
“INSTALL, IT FITS”

**SABCO**<sup>®</sup> lateral mounting



**00 70 11**

Avis Technique n°2/15-1673



## Side fixing

*For a maximum transparency*

**Applications:** private/ public

**Glass thickness:** from 15 to 25.52 mm according to the application

- Very fast installation: simple adjustment thanks to the patented clamps, no other actions except tightening.
- All glass types and sizes tested (tempered / not tempered). All the interlayers.
- Adjustment of the glass alignment of + or - 15 mm at 1.10 m.
- Maximum glass length is 2.50 m and height is 2.10 m for a windbreak and railing function.
- Integrated drainage system.
- No specialized tools required.
- Various cladding configurations are available. Please refer to page 14.



## PERFORMANCES & LOADS

	AVIS TECHNIQUE (FR 3034)			BRITISH STANDARD 6180		
	900 joules			No test required		
<b>Dynamic test</b>						
<b>Statical load</b>	0,6 to 1,8 kN	1 to 3 kN	1,7 to 5,1 kN	0,36 kN	0,74 kN	1,5 kN
<b>Hole fixing distance</b>	200 mm	200 mm	-	400 mm	400 mm	400 mm
<b>Glass</b>	<b>15</b> monolithic			4 w/m	4 w/m	
	<b>8.8.2</b> PVB tempered			4 w/m		
	<b>8.8.2</b> EVA tempered			4 w/m		
	<b>8.8.2</b> Trosifol ES tempered	4 w/m	4 w/m	4 w/m	4 w/m	
	<b>8.8.2</b> DG41 tempered	4 w/m	4 w/m	4 w/m	4 w/m	
	<b>8.8.2</b> SGP	4 w/m	4 w/m	4 w/m	4 w/m	
	<b>10.10.4</b> PVB tempered	4 w/m	4 w/m	4 w/m	4 w/m	
	<b>10.10.2</b> EVA tempered	4 w/m	4 w/m	4 w/m	4 w/m	
	<b>10.10.2</b> Trosifol ES tempered	4 w/m	4 w/m	4 w/m	4 w/m	4 w/m
	<b>10.10.2</b> DG41 tempered	4 w/m	4 w/m	4 w/m	4 w/m	4 w/m
	<b>19</b> monolithic			4 w/m	4 w/m	
	<b>10.10.2</b> SGP tempered	4 w/m	4 w/m	4 w/m	4 w/m	4 w/m
	<b>10.10.2</b> SGP not tempered			4 w/m	4 w/m	
	<b>12.12.2</b> SGP not tempered	5 w/m		4 w/m	4 w/m	
	<b>12.12.4</b> PVB tempered	4 w/m	4 w/m	4 w/m	4 w/m	4 w/m
<b>12.12.2</b> EVA tempered	4 w/m	4 w/m	4 w/m	4 w/m	4 w/m	

Please refer to reference  
**00 70 13**

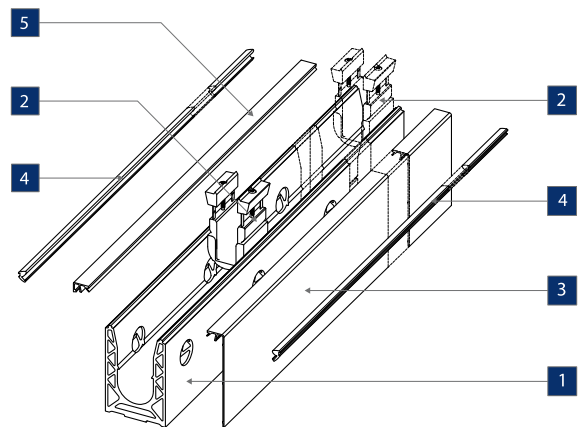
- Under Avis Technique
- AT Rated satisfactory
- Under British Standard
- BS Rated satisfactory
- Not rated satisfactory

## LATERAL MOUNTING KIT

The **SABCO** profile, lateral mounting is available in a kit, you can also order other accessories separately (see the following page).

### In the kit:

- 1 Profile (2 500 mm)
- 2 Wedges (one box)
- 3 Low cladding
- 4 Seals (2x 2 500 mm)
- 5 High cladding



### Example of construction of the Reference in your kit:

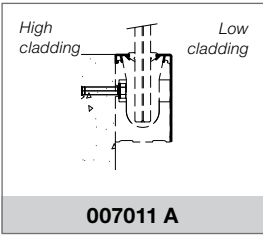
Reference	Glass	Number of wedges	Finish*
<b>00 70 11</b>	15	4C	01 (Natural Aluminium)
	08 08		02 (Brushed Stainless Steel)
	10 10	5C	03 (RAL aluminium)
	12 12		

**007011**: SABCO lateral profile > **08 08**: thickness of your glass > **4C**: number of slabs (see above table) > **01**: Natural Aluminium Finish =  
Reference: **007011 0808 4C 01**

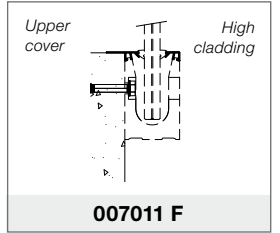
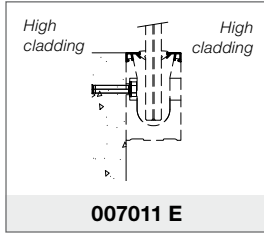
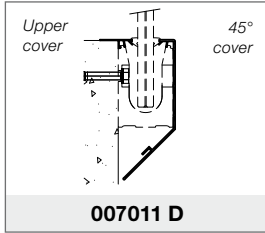
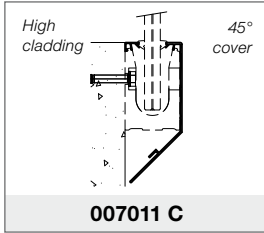
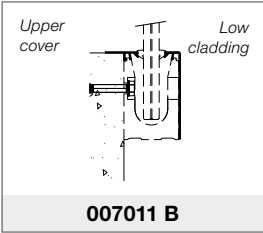
# CLADDING CONFIGURATIONS AVAILABLE

SABCO®  
LATERAL MOUNTING

## STANDARD



## SPECIAL



## A COMPLETE LINE OF HAND RAILS TO COMPLETE THE INSTALLATION (see p. 32)



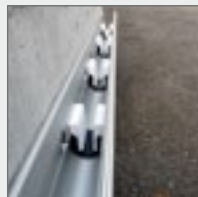
## HOW TO MOUNT YOUR SABCO® IN 7 STEPS

Step 01



Mount the rail

Step 02



Install the U wedges

Step 03



Install the glass

Step 04



Simultaneously adjust vertical alignment and tighten clamp

Step 05



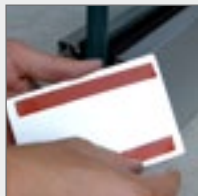
Attach the profile covers

Step 06



Press in the seals

Step 07



Install the end caps



Consult the SABCO mounting video by scanning this code:








## DETAIL OF THE ACCESSORIES INCLUDED IN THE KIT

### WEDGES TABLE

The wedges are provided with the Kit. The usage of wedges is directly connected to the size of your glass panels.

Refer to the instructions to calculate the exact number of wedges.

Color	Glass	Glass thickness [min ; max]	Reference (box with 10 wedges)
White 	08 08	16,76 <sup>0</sup> / <sub>-0,5</sub> [16,26 ; 16,76]	00709KIT10CALE0808
		17,52 <sup>0</sup> / <sub>-0,5</sub> [17,02 ; 17,52]	
Green 	10 10	20,76 <sup>0</sup> / <sub>-0,5</sub> [20,26 ; 20,76]	00709KIT10CALE1010
		21,52 <sup>0</sup> / <sub>-0,5</sub> [21,02 ; 21,52]	
		20,64 (13/16") <sup>0</sup> / <sub>-0,5</sub> [20,14 ; 20,64]	
Yellow 	12 12	24,76 <sup>0</sup> / <sub>-0,5</sub> [24,26 ; 24,76]	00709KIT10CALE1212
		25 <sup>0</sup> / <sub>-0,5</sub> [24,5 ; 25]	
		25,52 <sup>0</sup> / <sub>-0,5</sub> [25,02 ; 25,52]	

### THE LOW CLADDING



They cover the **SABCO** system on the lower side of the profile.

**++ Finishes, clipped and pasted fastening**

#### Material

Natural Aluminium

Alu, St. steel Effect

RAL Aluminium

#### Reference

007090CAPO01

007090CAPO01AB

007090CAPO01P

### THE HIGH CLADDING



They cover the **SABCO** profile and adjust to their environment thanks to different finishes.

**++ Finishes, clipped and pasted fastening**

#### Material

Natural Aluminium

Alu, St. steel Effect

RAL Aluminium

#### Reference

007090CAPO02

007090CAPO02AB

007090CAPO02P

### THE END CAPS



They are fastened on the profile and adjust to their environment thanks to different finishes.

**++ Finishes, design**

#### Material

Natural Aluminium

Alu St. steel Effect

RAL Aluminium

#### Ref. Ground

0070CE11-01A

0070CE11-02A

0070CE11-03A

#### Ref. Slant

0070CER11-01A

0070CER11-02A

0070CER11-03A

### THE SEALS



Help protecting the profile from dust and water.

**++ Waterproof, finish**

#### Glass

08 08

10 10

12 12

#### Reference

007090JOINT0808 (grey)

007090JOINT1010 (black)

007090JOINT1212 (black)

### SPACERS



Help maintaining a regular space interval between the glass panels.

**++ Waterproof, 5 mm width**

#### Glass

08 08

10 10

12 12

#### Reference

007090ESPAC0808

007090ESPAC1010

007090ESPAC1212

### SCREW / WALL PLUG



Anchor for floor mounting; depends on the class of concrete.

#### Designation

Box of 50 galvanized steel screws for concrete

Box of 25 stainless steel screws for concrete

Box of 40 galvanized steel mechanical wall plugs

#### Reference

09HUS3-H10X70

09HUS-HR10X75

09HSLM8/20

### ALIGNMENT PINS



The pins allow assembling the rails together.

**++ Save time, Alignment**

#### Reference

D1481A2-8-50

### TORX BIT



It allows tightening the glass in the wedges.

**++ Ease of operation, practical, good tightening performance,**

#### Reference

007-TORX-T20/150

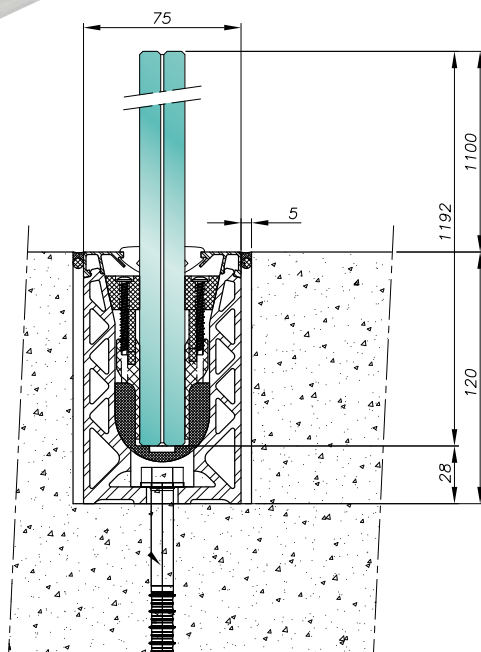
“INSTALL, IT FITS”

**SABCO**<sup>®</sup> built-in-slab

Avis Technique n°2/15-1673



**00 70 12**



## Built-in-slab

*For a maximum transparency*

**Applications:** Private / public

**Glass thickness:** from 15 to 25.52 mm according to the application

- Very fast installation: simple adjustment thanks to the patented clamps, no other actions except tightening.
- All glass types and sizes tested (tempered / not tempered). All the interlayers.
- Adjustment of the glass alignment of + or - 15 mm at 1.10 m.
- Maximum glass length is 2.50 m and height is 2.10 m for a windbreak and railing function.
- No specialized tools required.
- Various cladding configurations are available. Please refer to page 18.

[www.sadev.com](http://www.sadev.com)

Tel. : +33 (0)4 50 08 39 00 / Fax : +33 (0)4 50 08 39 49 / [info@sadev.com](mailto:info@sadev.com)



**SADEV**<sup>®</sup>  
ARCHITECTURAL GLASS SYSTEMS

## PERFORMANCES & LOADS

	AVIS TECHNIQUE (FR 3034)		BRITISH STANDARD 6180			
	900 joules		No test required			
<b>Dynamic test</b>						
<b>Statical load</b>	0,6 to 1,8 kN	1 to 3 kN	0,36 kN	0,74 kN	1,5 kN	
<b>Hole fixing distance</b>	200 mm	200 mm	200 mm	200 mm	200 mm	
<b>Glass</b>	<b>15</b> monolithic		4 w/m	4 w/m		
	<b>8.8.2</b> PVB tempered		4 w/m			
	<b>8.8.2</b> EVA tempered		4 w/m			
	<b>8.8.2</b> Trosifol ES tempered	4 w/m	4 w/m	4 w/m	4 w/m	
	<b>8.8.2</b> DG41 tempered	4 w/m	4 w/m	4 w/m	4 w/m	
	<b>8.8.2</b> SGP	4 w/m	4 w/m	4 w/m	4 w/m	
	<b>10.10.4</b> PVB tempered	4 w/m	4 w/m	4 w/m	4 w/m	
	<b>10.10.2</b> EVA tempered	4 w/m	4 w/m	4 w/m	4 w/m	
	<b>10.10.2</b> Trosifol ES tempered	4 w/m	4 w/m	4 w/m	4 w/m	4 w/m
	<b>10.10.2</b> DG41 tempered	4 w/m	4 w/m	4 w/m	4 w/m	4 w/m
	<b>19</b> monolithic			4 w/m	4 w/m	
	<b>10.10.2</b> SGP tempered	4 w/m	4 w/m	4 w/m	4 w/m	4 w/m
	<b>10.10.2</b> SGP not tempered			4 w/m	4 w/m	
	<b>12.12.2</b> SGP not tempered	5 w/m		4 w/m	4 w/m	
	<b>12.12.4</b> PVB tempered	4 w/m	4 w/m	4 w/m	4 w/m	4 w/m
<b>12.12.2</b> EVA tempered	4 w/m	4 w/m	4 w/m	4 w/m	4 w/m	

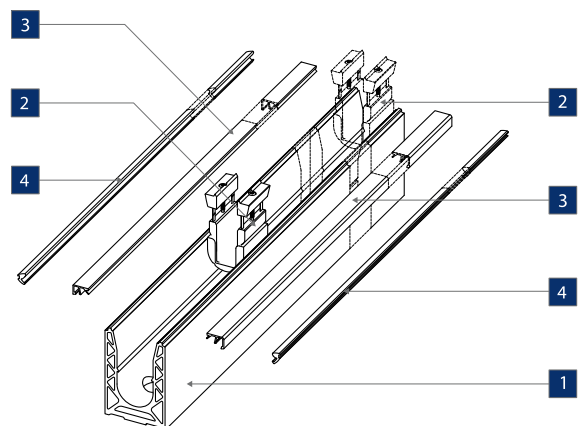
Under Avis Technique
  AT Rated satisfactory
  BS Rated satisfactory
  Not rated satisfactory

## BUILT-IN-SLAB KIT

The **SABCO** profile, built-in-slab is available in kit, you can also order other accessories separately (see the following page).

### In the kit:

- 1 Profile (2 500 mm)
- 2 Wedges (one box)
- 3 High cladding (x2)
- 4 Seals (2x 2 500 mm)



### Example of construction of the Reference in your kit:

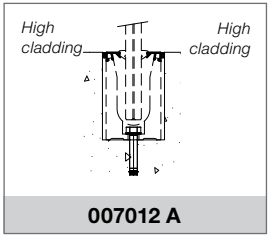
Reference	Glass	Number of wedges	Finish*
<b>00 70 12</b>	15	4C	01 (Natural Aluminium)
	08 08		02 (Brushed Stainless Steel)
	10 10	5C	03 (RAL aluminium)
	12 12		

**007012:** Built-in-slab **SABCO** profile > **12 12:** thickness of your glass > **4C:** number of slabs (see the above table) > **02:** Brushed Stainless Steel Finish Effect = Reference: **007012 1212 4C 02**

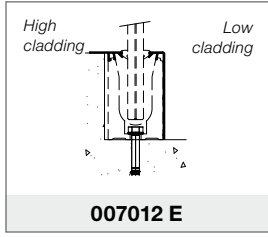
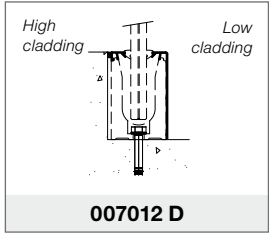
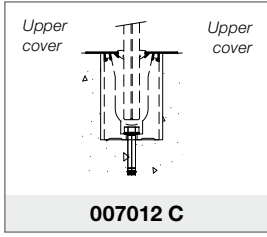
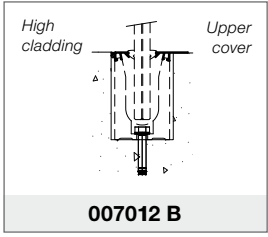
# CLADDING CONFIGURATIONS AVAILABLE

SABCO®  
BUILT-IN-SLAB

## STANDARD



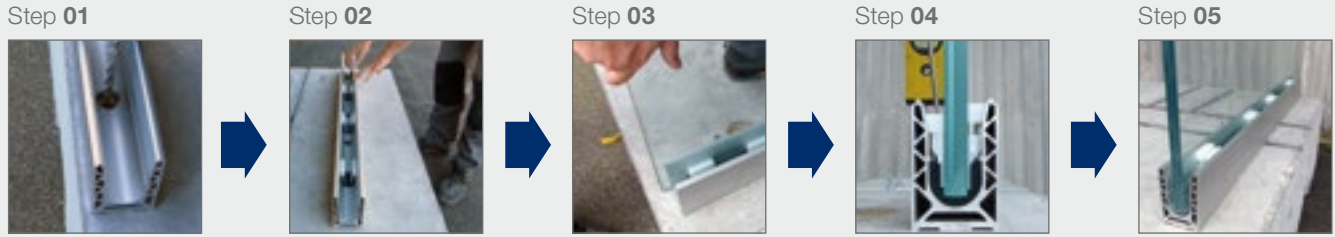
## SPECIAL



## A COMPLETE LINE OF HAND RAILS TO COMPLETE THE INSTALLATION (see p. 32)



### HOW TO MOUNT YOUR SABCO® IN 6 STEPS



Consult the SABCO mounting video by scanning this code:






## DETAIL OF THE ACCESSORIES INCLUDED IN THE KIT

### WEDGES TABLE

The wedges are provided with the Kit. The usage of wedges is directly connected to the size of your glass panels.

Refer to the instructions to calculate the exact number of wedges.

Color	Glass	Glass thickness [min ; max]	Reference (box with 10 wedges)
White 	08 08	16,76 <sup>0</sup> / <sub>-0,5</sub> [16,26 ; 16,76]	00709KIT10CALE0808
		17,52 <sup>0</sup> / <sub>-0,5</sub> [17,02 ; 17,52]	
Green 	10 10	20,76 <sup>0</sup> / <sub>-0,5</sub> [20,26 ; 20,76]	00709KIT10CALE1010
		21,52 <sup>0</sup> / <sub>-0,5</sub> [21,02 ; 21,52]	
		20,64 (13/16") <sup>0</sup> / <sub>-0,5</sub> [20,14 ; 20,64]	
Yellow 	12 12	24,76 <sup>0</sup> / <sub>-0,5</sub> [24,26 ; 24,76]	00709KIT10CALE1212
		25 <sup>0</sup> / <sub>-0,5</sub> [24,5 ; 25]	
		25,52 <sup>0</sup> / <sub>-0,5</sub> [25,02 ; 25,52]	

### THE HIGH CLADDING



They cover the **SABCO** profile and adjust to their environment thanks to different finishes.

++ Finishes, clipped and pasted fastening

#### Material

Natural Aluminium  
Alu, St. steel Effect  
RAL Aluminium

#### Reference

007090CAPO02  
007090CAPO02AB  
007090CAPO02P

### THE SEALS



Help protecting the profile from dust and water.

++ Waterproof, finish

#### Glass

08 08  
10 10  
12 12

#### Reference

007090JOINT0808 (grey)  
007090JOINT1010 (black)  
007090JOINT1212 (black)

### SPACERS



Help maintaining a regular space interval between the glass panels.

++ Waterproof, 5 mm width

#### Glass

08 08  
10 10  
12 12

#### Reference

007090ESPAC0808  
007090ESPAC1010  
007090ESPAC1212

### SCREW / WALL PLUG



Anchor for floor mounting; depends on the class of concrete.

#### Designation

Box of 50 galvanized steel screws for concrete  
Box of 25 stainless steel screws for concrete  
Box of 40 galvanized steel mechanical wall plugs

#### Reference

09HUS3-H10X70  
09HUS-HR10X75  
09HSLM8/20

### ALIGNMENT PINS



The pins allow assembling the rails together.

++ Save time, Alignment

#### Reference

D1481A2-8-50

### TORX BIT



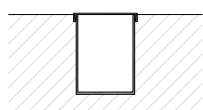
It allows tightening the glass in the wedges.

++ Ease of operation, practical, good tightening performance, tamperproof

#### Reference

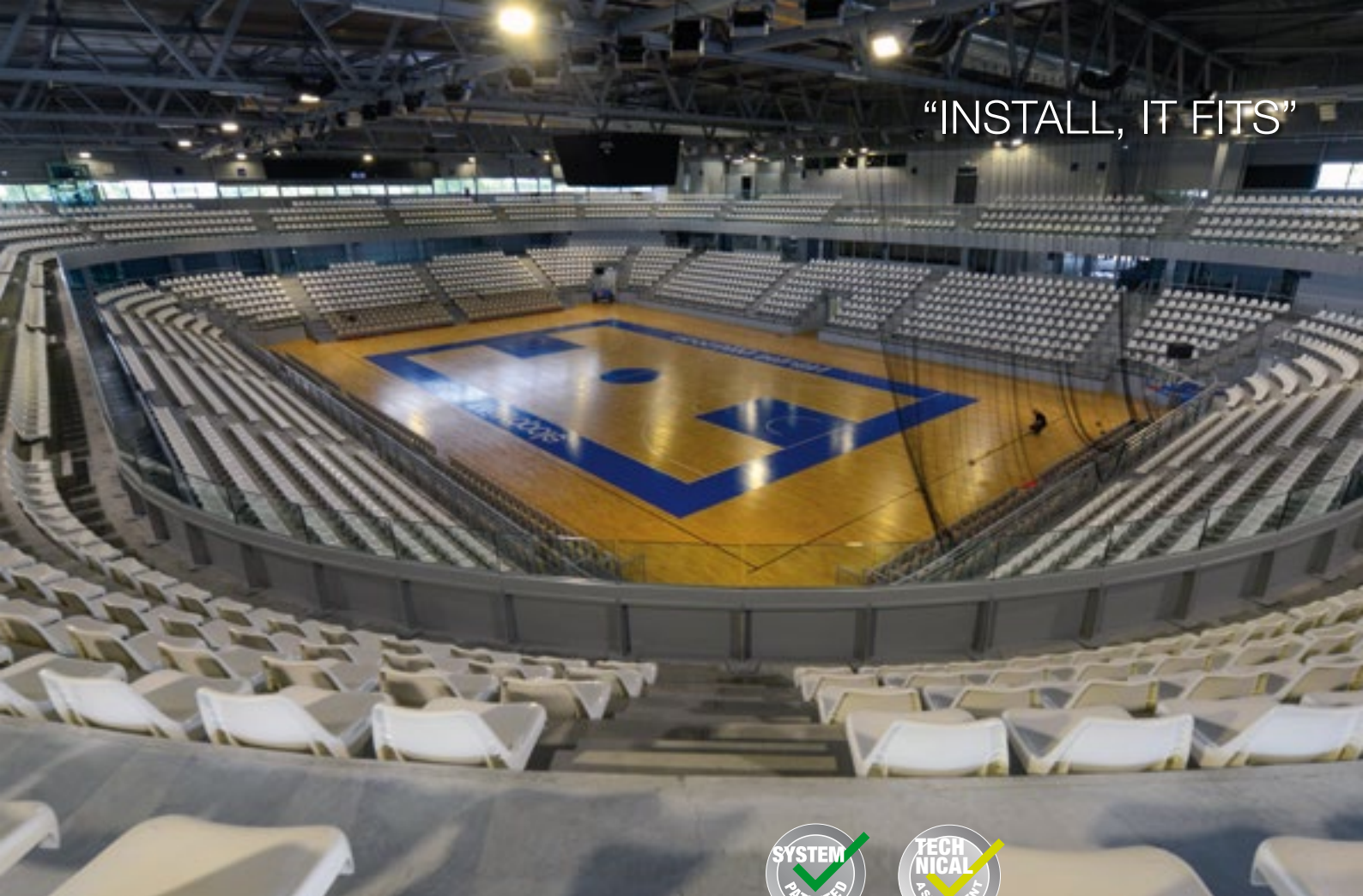
007-TORX-T20/150

### RESERVATION PROFILE



A fast and simple way to form a recess in the slab when pouring the concrete.

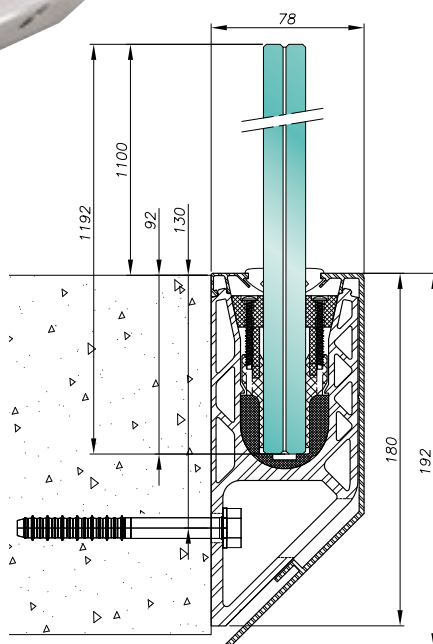
“INSTALL, IT FITS”



**SABCO**<sup>®</sup> lateral mounting, offset fixing

**00 70 13**

*Avis Technique n°2/15-1673*



## Offset side fixing

*Lateral mounting and offset fixing every 400 mm*

**Applications:** Private / public / stadium

**Glass thickness:** from 15 to 25.52 mm according to the application

- Very fast installation: simple adjustment thanks to the patented clamps, no other actions except tightening.
- All glass types and sizes tested (tempered / not tempered). All the interlayers.
- Adjustment of the glass alignment of + or - 15 mm at 1.10 m.
- Maximum glass length is 2.50 m and height is 2.10 m for a windbreak and railing function.
- Integrated drainage system.
- No specialized tools required.
- Various cladding configurations are available. Please refer to page 22.



# PERFORMANCES & LOADS

## AVIS TECHNIQUE (FR 3034)

Dynamic test		900 joules			
Statical load		0,6 to 1,8 kN	1 to 3 kN	1,7 to 5,1 kN	
Hole fixing distance		400 mm	400 mm	200 mm	
Glass	8.8.2 PVB tempered			Upon request	
	8.8.2 EVA tempered				
	8.8.2 Trosifol ES tempered	4 w/m	4 w/m		
	8.8.2 DG41 tempered	4 w/m	4 w/m		
	10.10.4 PVB tempered	4 w/m	4 w/m		
	10.10.2 EVA tempered	4 w/m	4 w/m		
	10.10.2 Trosifol ES tempered	4 w/m	4 w/m		
	10.10.2 DG41 tempered	4 w/m	4 w/m		
	10.10.2 SGP tempered	4 w/m	4 w/m		5 w/m
	12.12.2 SGP not tempered	5 w/m			
	12.12.4 PVB tempered	4 w/m	4 w/m		
	12.12.2 EVA tempered	4 w/m	4 w/m		

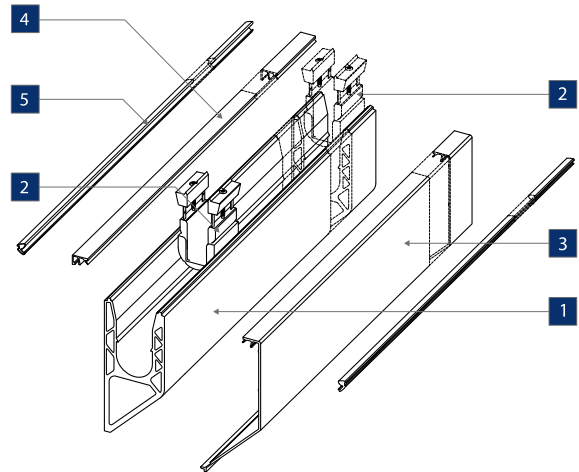
Under Avis Technique
  AT Rated satisfactory
  Not rated satisfactory

## OFFSET LATERAL MOUNTING KIT

The **SABCO** profile, lateral mounting, offset fixing, is available in kit, you can also order other accessories separately (see the following page).

### In the kit:

- 1 Profile (2 500 mm)
- 2 Wedges (one box)
- 3 Low gladding with 45° cover
- 4 High cladding
- 5 Seals (2x 2 500 mm)



### Example of construction of the Reference in your kit:

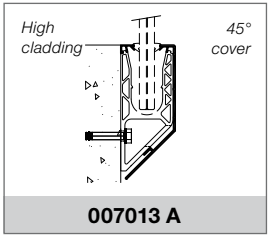
Reference	Glass	Number of wedges	Finish*
00 70 13	08 08	4C	01 (Natural Aluminium)
	10 10		02 (Brushed Stainless Steel)
	12 12	5C	03 (RAL aluminium)

007013 : SABCO profile offset side fixing > 10 10: thickness of your glass > 5C: number of slabs (see table above) > 01: Natural Aluminium  
 Finish = Reference: 007013 1010 5C 01

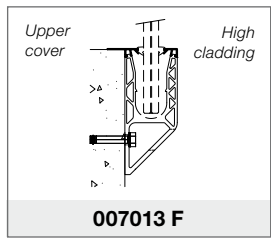
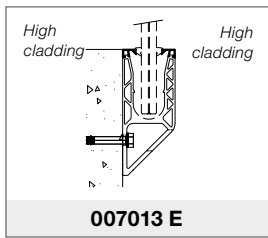
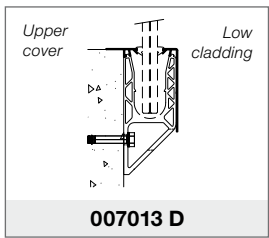
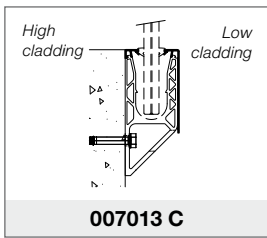
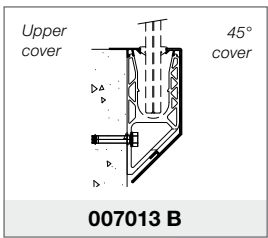
# CLADDING CONFIGURATIONS AVAILABLE

SABCO®  
LATERAL MOUNTING, OFFSET FIXING

## STANDARD



## SPECIAL



## A COMPLETE LINE OF HAND RAILS TO COMPLETE THE INSTALLATION (see p. 32)



## HOW TO MOUNT YOUR SABCO® IN 7 STEPS

Step 01



Mount the rail

Step 02



Install the U wedges

Step 03



Install the glass

Step 04



Simultaneously adjust vertical alignment and tighten clamp

Step 05



Attach the profile covers

Step 06



Press in the seals

Step 07



Install the end caps



Consult the SABCO mounting video by scanning this code:








## DETAIL OF THE ACCESSORIES INCLUDED IN THE KIT

### WEDGES TABLE

The wedges are provided with the Kit. The usage of wedges is directly connected to the size of your glass panels.

Refer to the instructions to calculate the exact number of wedges.

Color	Glass	Glass thickness [min ; max]	Reference (box with 10 wedges)
White 	08 08	16,76 <sup>0</sup> / <sub>-0,5</sub> [16,26 ; 16,76]	00709KIT10CALE0808
		17,52 <sup>0</sup> / <sub>-0,5</sub> [17,02 ; 17,52]	
Green 	10 10	20,76 <sup>0</sup> / <sub>-0,5</sub> [20,26 ; 20,76]	00709KIT10CALE1010
		21,52 <sup>0</sup> / <sub>-0,5</sub> [21,02 ; 21,52]	
		20,64 (13/16") <sup>0</sup> / <sub>-0,5</sub> [20,14 ; 20,64]	
Yellow 	12 12	24,76 <sup>0</sup> / <sub>-0,5</sub> [24,26 ; 24,76]	00709KIT10CALE1212
		25 <sup>0</sup> / <sub>-0,5</sub> [24,5 ; 25]	
		25,52 <sup>0</sup> / <sub>-0,5</sub> [25,02 ; 25,52]	

### THE LOW CLADDING WITH 45° COVER



They cover the **SABCO** profile and adjust to their environment thanks to different finishes.

++ Finishes, clipped and pasted fastening

#### Material

Natural Aluminium

#### Reference

007090CAPO03

Alu, St. steel Effect

007090CAPO03AB

RAL Aluminium

007090CAPO03P

### THE HIGH CLADDING



They cover the **SABCO** profile and adjust to their environment thanks to different finishes.

++ Finishes, clipped and pasted fastening

#### Material

Natural Aluminium

#### Reference

007090CAPO02

Alu, St. steel Effect

007090CAPO02AB

RAL Aluminium

007090CAPO02P

### THE END CAPS



They are fastened on the profile and adjust to their environment thanks to different finishes.

++ Finishes, design

#### Reference

Please contact us to define the correct reference

### THE SEALS



Help protecting the profile from dust and water.

++ Waterproof, finish

#### Glass

08 08

#### Reference

007090JOINT0808 (grey)

10 10

007090JOINT1010 (black)

12 12

007090JOINT1212 (black)

### SPACERS



Help maintaining a regular space interval between the glass panels.

++ Waterproof, 5 mm width

#### Glass

08 08

#### Reference

007090ESPAC0808

10 10

007090ESPAC1010

12 12

007090ESPAC1212

### SCREW / WALL PLUG



Anchor for floor mounting; depends on the class of concrete.

#### Designation

Box of 50 galvanized steel screws for concrete

#### Reference

09HUS3-H10X70

Box of 25 stainless steel screws for concrete

09HUS-HR10X75

Box of 40 galvanized steel mechanical wall plugs

09HSLM8/20

### ALIGNMENT PINS



The pins allow assembling the rails together.

++ Save time, Alignment

#### Reference

D1481A2-8-50

### TORX BIT



It allows tightening the glass in the wedges.

++ Ease of operation, practical, good tightening performance,

#### Reference

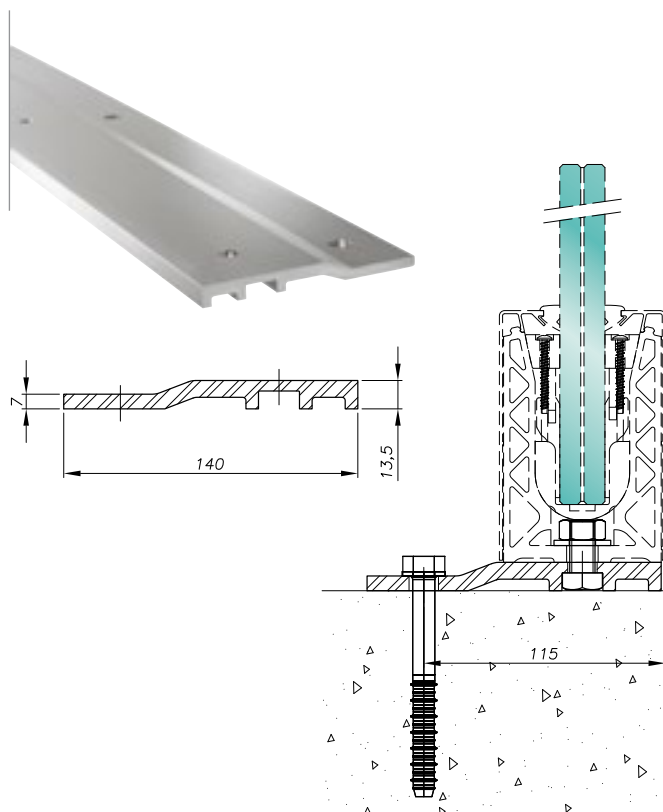
007-TORX-T20/150



# SABCO® offset floor mounting



Avis Technique n°2/15-1673



## Offset floor mounting plate kit

**Applications:** private / public / stadium

- The kit includes the set plate + screws; it helps with the offset mounting on the slab (slab edge alignment ...) every 400 mm and it is compatible with the SABCO system model 007010 (floor mounting).

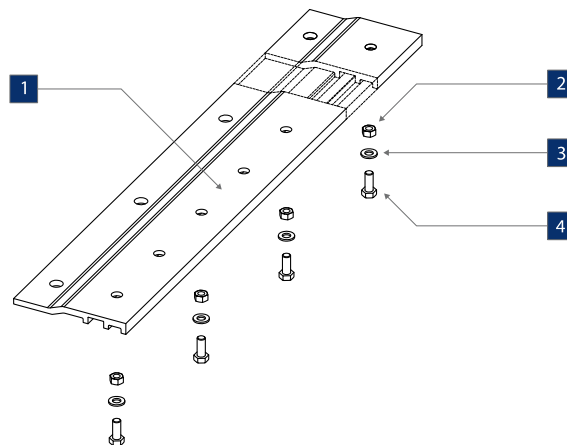
The offset profile can be added upon request, even if the balustrade profile has already been ordered.



## OFFSET FLOOR MOUNTING KIT

### In the kit:

- 1 Plate (2 500 mm)
- 2 Nut (M12 x13)
- 3 Washer (M12 x13)
- 4 Screw (A4 x13)



### DRILLED FASTENING PLATE

#### Material

Natural Aluminium plate

#### Reference

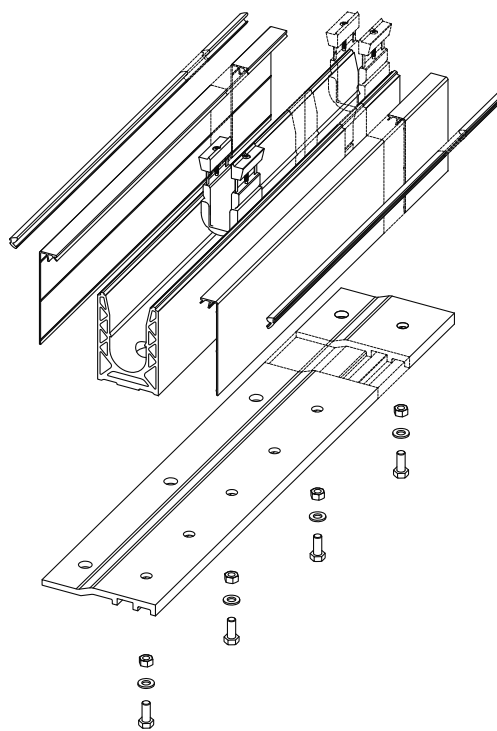
00 70 90 SEM01V

### Compatibility

The offset fastening plate kit is compatible with the profile

## SABCO® 00 70 10

(see page 10).



### Detail

### DRILLED FASTENING PLATE WITHOUT SCREWS

It is possible to order the drilled fastening plate, without screws.

#### Material

Natural Aluminium plate

#### Reference

00 70 90 SEM01

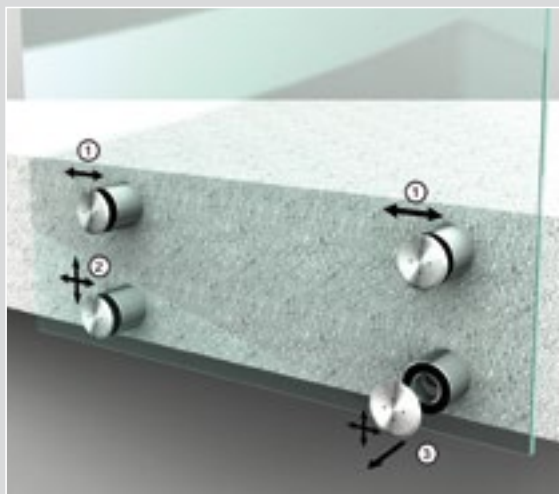
# BALUSTRADE WALL POINT FIXINGS



## Technical Specifications

- Multiple adjustments possible: horizontal, vertical, depth.
- Public Installation (establishment open to public).
- Fast installation.
- Available in Stainless Steel 304 and 316.
- Validated glass sizes:  
Height: 1 260 mm  
Length: 1 000 to 1 400 mm

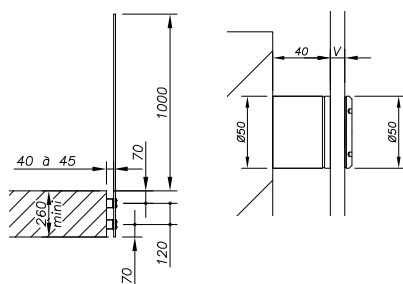
Avis Technique from AGC n° 2/15-1670



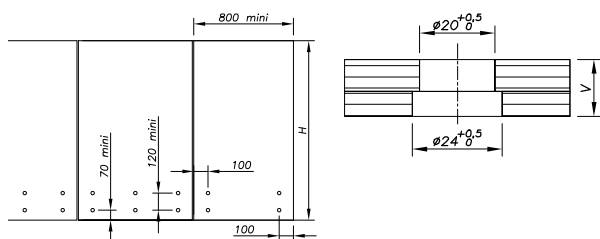
### SLAB NOSING RAILING $\varnothing$ 50 mm



#### Size



#### Drilling Plan



#### Glass thickness

12 > 25,52 mm  
25,52 > 31,52 mm

#### Reference

00 01 10      00 01 10 A4\*  
00 01 10-31      00 01 10-31 A4\*

Other glass thickness upon request.

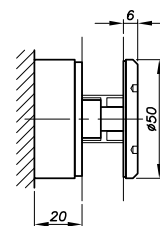
\*A4 for Stainless Steel 316

### Application without Tests Reports

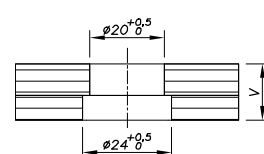
#### SLAB NOSING RAILING WITHOUT ADJUSTMENT $\varnothing$ 50 mm



#### Size



#### Drilling Plan



#### Glass thickness

17,52 > 21,52 mm  
22 > 25,52 mm

#### Reference

00 01 20  
00 01 20-25

Other glass thickness upon request.



**Extract from the Avis Technique AGC n°2/15-1670**

<b>PVB DG 41 INTERLAYER</b>			
<b>Usages</b>	0.6 to 1.8 kN	1.0 to 3 kN	1.7 to 5.1 kN
<b>NFP 06-001</b>	RENTAL HOUSING	PUBLIC AREAS	STADIUM STANDS
<b>Features</b> according NF EN 1991-1 and 1991-2 and NF P06-111-2/A1	A and B	C1 to C4 D	-
<b>Composition</b>	10.10 / 12.12 / 15.15	10.10 / 12.12 / 15.15	10.10 / 12.12 / 15.15
<b>Minimal size (mm)</b>	500 / 500 / 900	500 / 500 / 900	1 100 / 500 / 900

<b>SENTRY GLASS INTERLAYER</b>			
<b>Usages</b>	0.6 to 1.8 kN	1.0 to 3 kN	1.7 to 5.1 kN
<b>NFP 06-001</b>	RENTAL HOUSING	PUBLIC AREAS	STADIUM STANDS
<b>Features</b> according NF EN 1991-1 and 1991-2 and NF P06-111-2/A1	A and B	C1 to C4 D	-
<b>Composition</b>	10.10 / 12.12 / 15.15	10.10 / 12.12 / 15.15	10.10 / 12.12 / 15.15
<b>Minimal size (mm)</b>	1 100 / 800 / 500	1 100 / 800 / 500	1 100 / 500 / 900

# BALUSTRADE POST WITH FIN MONTI



## Technical Specifications

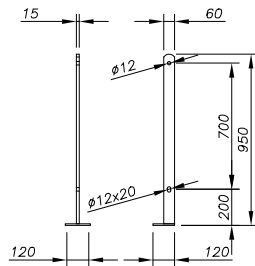
- System design with installed glass adjustment.
- Adjustment for glass alignment.
- Public Installation.
- French Test Reports (CEBTP) available.
- Easy installation.
- Standard in Stainless Steel 304.  
Available in Stainless Steel 316 or painted steel for posts.
- Validated glass sizes:  
1 000 and 1 200 mm: thickness 6.6  
1 400 mm: thickness 8.8



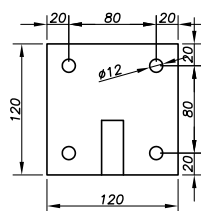
BALUSTRADE  
POST WITH FIN MONTI

### FLAT POST 60x15 mm

#### Size



#### Drilling Plan



#### Material

Steel ready to paint	00 60 15 P1-AC
Stainless Steel 304	00 60 15 P1-IN304
Stainless Steel 316	00 60 15 P1-IN316

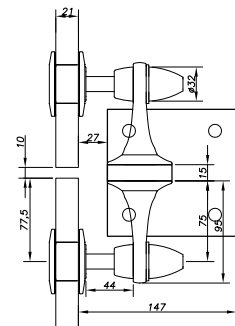
Slab nosing base upon request.

### PART FOR DOUBLE ATTACHMENT OF THE GLASS TO THE POST

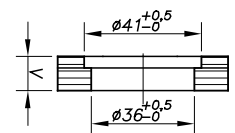
#### FIN MONTI Type



#### Size



#### Drilling Plan



Cylindrical

#### Glass thickness

8 > 12 mm	02 24 FM2-V2005-12*
12 > 17,5 mm	02 24 FM2-V2005-17*
19 > 22 mm	02 24 FM2-V2005-21*

Other glass thickness upon request.

\*A4 for Stainless Steel 316

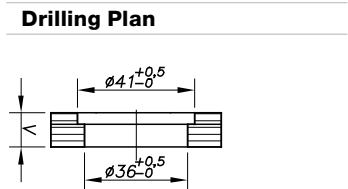
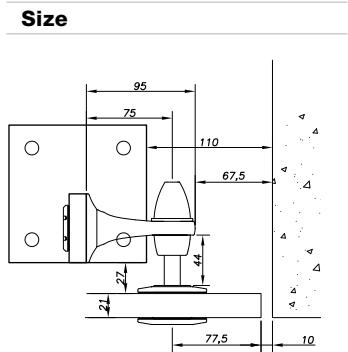


# BALUSTRADE POST WITH FIN MONTI



BALUSTRADE  
POST WITH FIN MONTI

## PART FOR SIMPLE ATTACHMENT OF THE GLASS TO THE POST FIN MONTI Type



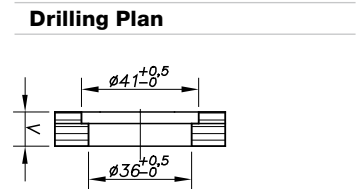
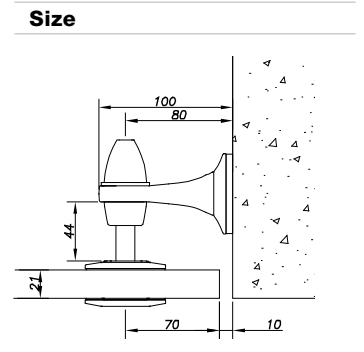
Cylindrical

Glass thickness	Reference
8 > 12 mm	02 24 FM1-V2005-12-V*
12 > 17,5 mm	02 24 FM1-V2005-17-V*
19 > 22 mm	02 24 FM1-V2005-21-V*

Other glass thickness upon request.

\*A4 for Stainless Steel 316

## PART FOR SIMPLE ATTACHMENT OF THE GLASS TO THE WALL FIN MONTI Type



Cylindrical

Glass thickness	Reference
8 > 12 mm	02 24 FM1-V2005-12-P*
12 > 17,5 mm	02 24 FM1-V2005-17-P*
19 > 22 mm	02 24 FM1-V2005-21-P*

Other glass thickness upon request.

\*A4 for Stainless Steel 316

# POSTS WITH FLAT GLASS CONNECTORS



### Technical Specifications

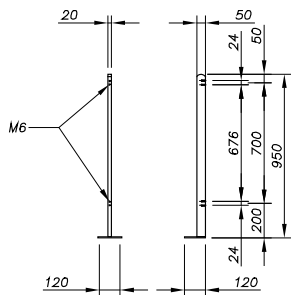
- Economical system with installed glass adjustment.
- Horizontal adjustment.
- Public Installation.
- French tests reports (CEBTP) available.
- Easy installation.
- Standard in Stainless Steel 304.  
Available in Stainless Steel 316 or painted steel for posts.
- Validated glass sizes:  
1 000 to 1 500 mm - thickness 8.8.



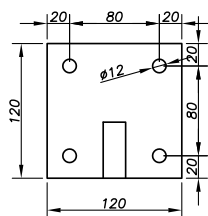
BALUSTRADE  
POSTS WITH FLAT GLASS CONNECTORS

## FLAT POST 50x20 mm

### Size



### Drilling Plan



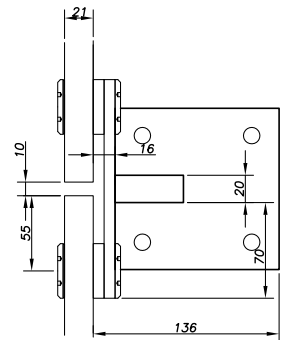
Material	Reference
Steel ready to paint	00 50 20 P1-AC
Stainless Steel 304	00 50 20 P1-IN304
Stainless Steel 316	00 50 20 P1-IN316

Slab nosing base upon request.

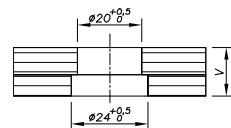
## PART FOR DOUBLE ATTACHMENT OF THE GLASS TO THE POST

### Type FLAT GLASS CONNECTOR

### Size



### Drilling Plan



Cylindrical

Glass thickness	Reference
13,52 > 17,52 mm	02 28 20 GD2 06 24 30*
19 > 21,52 mm	02 28 20 GD2 06 24 34
21,52 > 25,52 mm	02 28 20 GD2 06 24 38

Other glass thickness upon request.

\*A4 for Stainless Steel 316





# POSTS WITH FLAT GLASS CONNECTORS

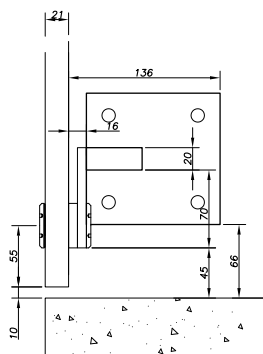


BALUSTRADE  
POSTS WITH FLAT GLASS CONNECTORS

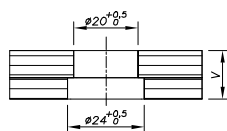
## PART FOR SIMPLE ATTACHMENT OF THE GLASS TO THE POST

Type **FLAT GLASS CONNECTOR**

**Size**



**Drilling Plan**



Cylindrical

**Glass thickness**

13,52 > 17,52 mm

19 > 21,52 mm

21,52 > 25,52 mm

**Reference**

**02 28 20 GD1 06 24 30\***

**02 28 20 GD1 06 24 34**

**02 28 20 GD1 06 24 38**

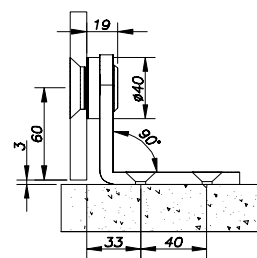
Other glass thickness upon request.

\*A4 for Stainless Steel 316

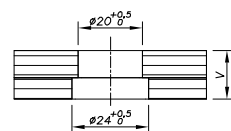
## PART FOR SIMPLE ATTACHMENT OF THE GLASS TO THE WALL

Type **FLAT GLASS CONNECTOR**

**Size**



**Drilling Plan**



Cylindrical

**Glass thickness**

13,52 > 17,52 mm

19 > 21,52 mm

21,52 > 25,52 mm

**Reference**

**02 29 21 06 24 30**

**02 29 21 06 24 34**

**02 29 21 06 24 38**

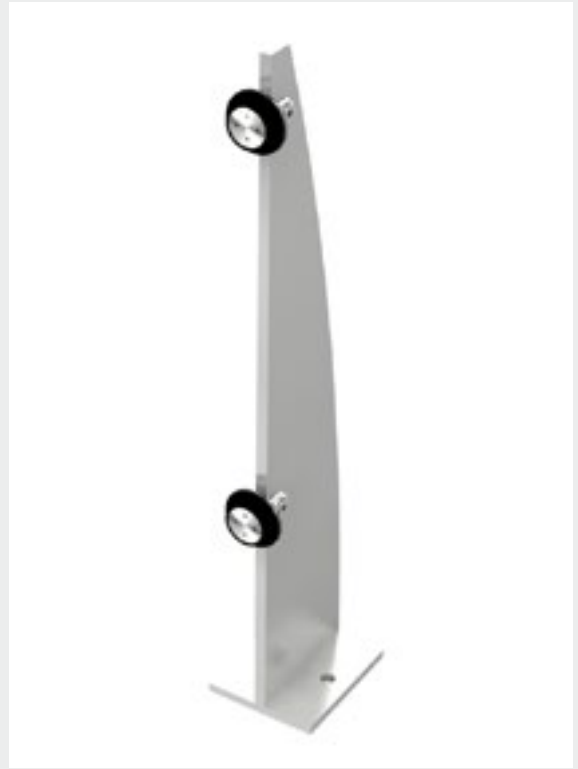
Other glass thickness upon request.

# BALUSTRADE "SHARK FIN" POST



## Technical Specifications

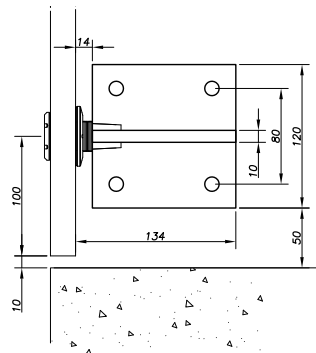
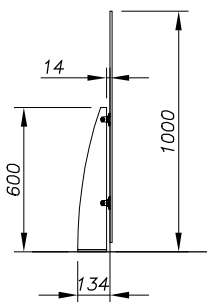
- System with installed glass adjustment.
- Multiple adjustment possibilities:  
horizontal, vertical, depth.
- Public Installation.
- French Tests Reports (CEBTP) available.
- Easy installation.
- Standard in Stainless Steel 304.  
Available in Stainless Steel 316 or painted steel for the posts.
- Validated glass sizes:  
1 000 to 1 400 mm: thickness 10.10/ 4



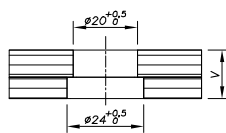
## POST AND ATTACHMENTS SET

### "SHARK FIN" Type

#### Size



#### Drilling Plan



Cylindrical

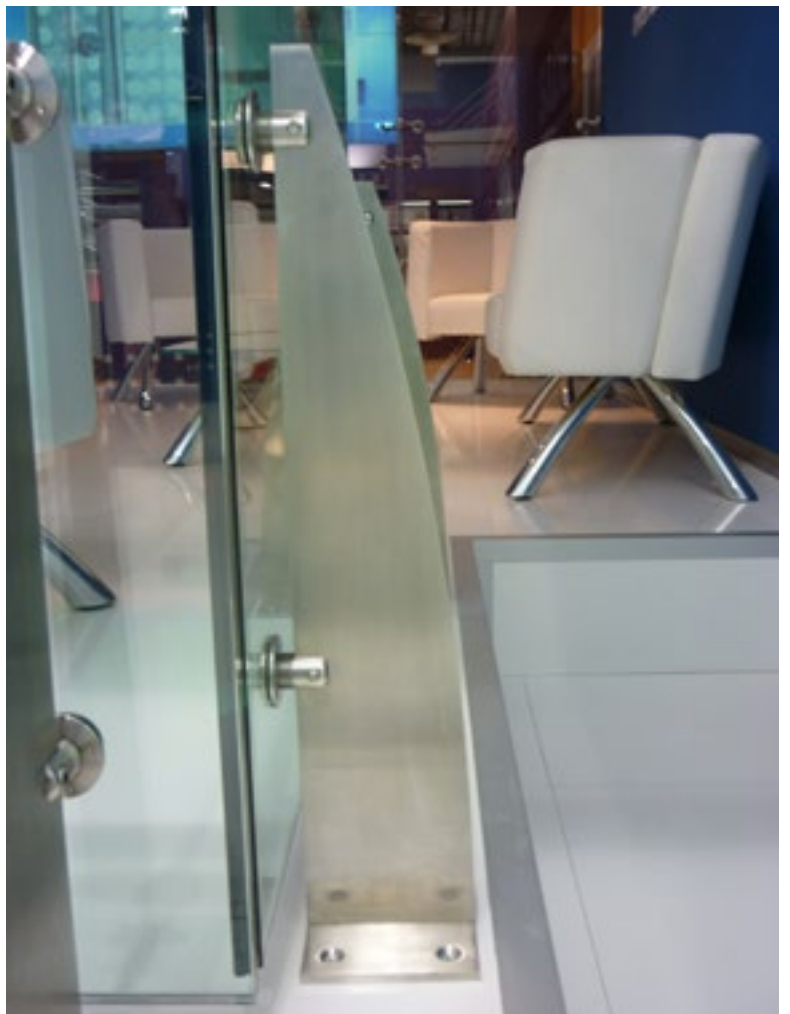
Material	Glass thickness	Reference
Steel ready to paint	10 > 13,52 mm	00 120 10 06 24 24-AC
Stainless Steel 304		00 120 10 06 24 24-304
Stainless Steel 316		00 120 10 06 24 24-316
Steel ready to paint	13,52 > 15,52 mm	00 120 10 06 24 26-AC
Stainless Steel 304		00 120 10 06 24 26-304
Stainless Steel 316		00 120 10 06 24 26-316
Steel ready to paint	15,52 > 17,52 mm	00 120 10 06 24 28-AC
Stainless Steel 304		00 120 10 06 24 28-304
Stainless Steel 316		00 120 10 06 24 28-316
Steel ready to paint	17,52 > 21,52 mm	00 120 10 06 24 32-AC
Stainless Steel 304		00 120 10 06 24 32-304
Stainless Steel 316		00 120 10 06 24 32-316
Steel ready to paint	21,52 mm	00 120 10 06 24 34-AC
Stainless Steel 304		00 120 10 06 24 34-304
Stainless Steel 316		00 120 10 06 24 34-316

Other glass thickness upon request.

BALUSTRADE  
"SHARK FIN" POST



BALUSTRADE  
"SHARK FIN" POST



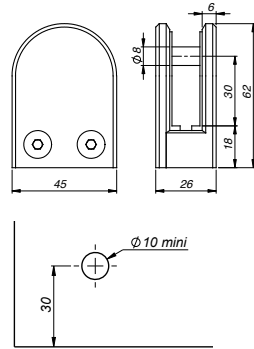
# BALUSTRADE GLASS CLAMPS

3 models of glass clamps made of Stainless Steel 316 are available, in 3 sizes, for installation on flat or tubular support.

## CLAMP 62x45 mm



### Size



### Glass thickness

### Adaptor

### Reference

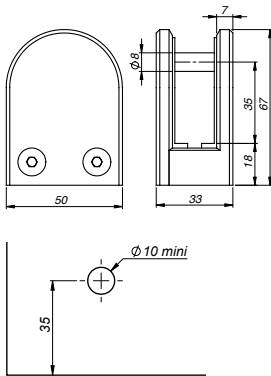
8 > 12 mm	Without adaptor	00086245-0812
	Adaptor ø 25 mm	00086245-0812-025
	Adaptor ø 42,4 mm	00086245-0812-424
	Adaptor ø 48,3 mm	00086245-0812-483

*Other glass thickness upon request.*

## CLAMP 67x50 mm



### Size



### Glass thickness

### Adaptor

### Reference

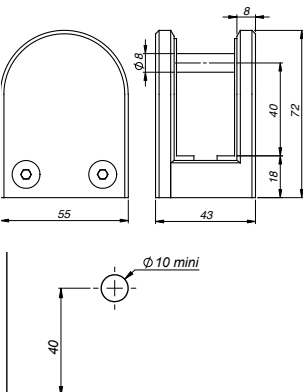
13,52 > 17,52 mm	Without adaptor	00086750-1218
	Adaptor ø 42,4 mm	00086750-1218-424
	Adaptor ø 48,3 mm	00086750-1218-483

*Other glass thickness upon request.*

## CLAMP 72x55 mm



### Size



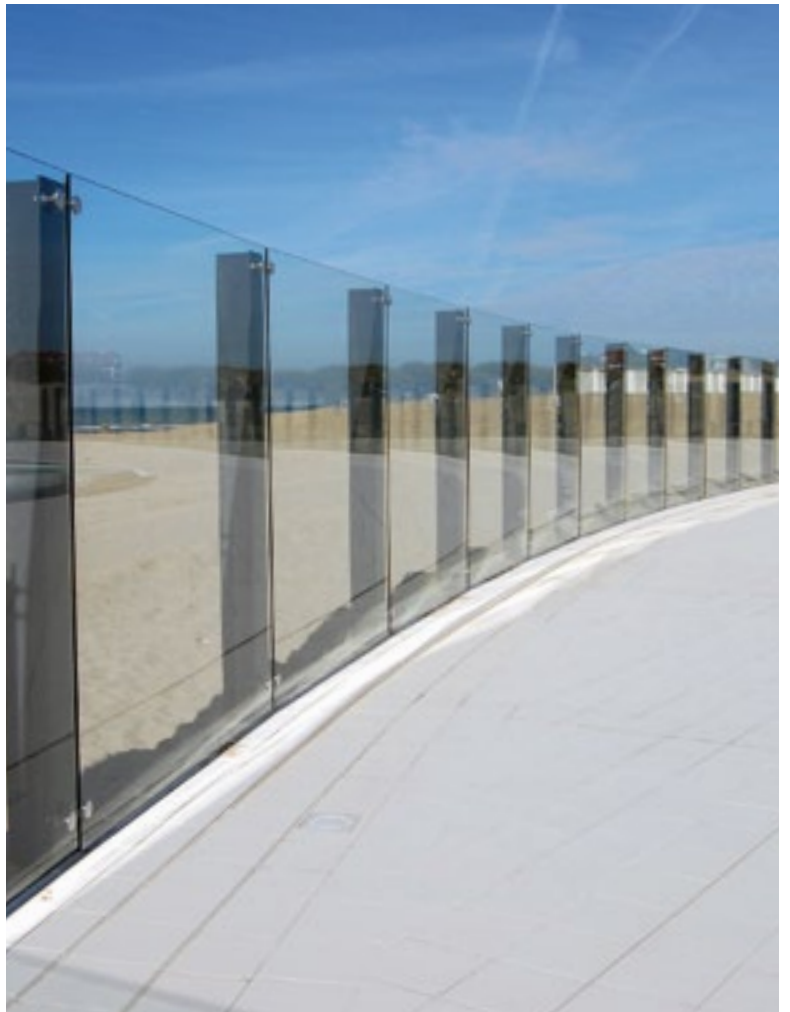
### Glass thickness

### Adaptor

### Reference

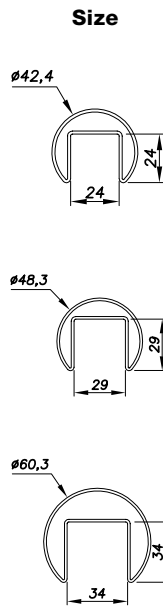
21,52 > 25,52 mm	Without adaptor	00087255-2126
	Adaptor ø 42,4 mm	00087255-2126-424
	Adaptor ø 48,3 mm	00087255-2126-483

*Other glass thickness upon request.*



# HAND RAILS ON GLASS

## PROFILE - BASE GROOVE TUBE 5 m



Diameter	Material	Reference
42,4 mm	Stainless Steel 304	00 10 20 42 500
	Stainless Steel 316	00 10 20 42 500 A4
48,3 mm	Stainless Steel 304	00 10 20 48 500
	Stainless Steel 316	00 10 20 48 500 A4
60,3 mm	Stainless Steel 304	00 10 20 60 500
	Stainless Steel 316	00 10 20 60 500 A4

## EPDM FILLED SEALS



Diameter	Glass thickness	Reference
42,4 mm	10 > 13,5 mm	00 10 24 10 135
	15 > 17,5 mm	00 10 24 15 175
	19 > 21,5 mm	00 10 24 19 215
48,3 mm	10 > 13,5 mm	00 10 29 10 135
	15 > 17,5 mm	00 10 29 15 175
	19 > 21,5 mm	00 10 29 19 215
	21,5 > 25,5 mm	00 10 29 21 255
60,3 mm	15 > 17,5 mm	00 10 34 15 175
	19 > 21,5 mm	00 10 34 19 215
	19 > 25,5 mm	00 10 34 21 255

Other glass thickness upon request.

## CAPS



Diameter	Material	Reference
42,4 mm	Stainless Steel 304	00 10 20 42 10
	Stainless Steel 316	00 10 20 42 10 A4
48,3 mm	Stainless Steel 304	00 10 20 48 10
	Stainless Steel 316	00 10 20 48 10 A4
60,3 mm	Stainless Steel 304	00 10 20 60 10
	Stainless Steel 316	00 10 20 60 10 A4

**HAND RAILS ON GLASS****CONNECTORS 90°**

Diameter	Material	Reference
42,4 mm	Stainless Steel 304	<b>00 10 20 42 29</b>
	Stainless Steel 316	<b>00 10 20 42 29 A4</b>
48,3 mm	Stainless Steel 304	<b>00 10 20 48 29</b>
	Stainless Steel 316	<b>00 10 20 48 29 A4</b>
60,3 mm	Stainless Steel 304	<b>00 10 20 60 29</b>
	Stainless Steel 316	<b>00 10 20 60 29 A4</b>

**CONNECTORS 180°**

Diameter	Material	Reference
42,4 mm	Stainless Steel 304	<b>00 10 20 42 20</b>
	Stainless Steel 316	<b>00 10 20 42 20 A4</b>
48,3 mm	Stainless Steel 304	<b>00 10 20 48 20</b>
	Stainless Steel 316	<b>00 10 20 48 20 A4</b>
60,3 mm	Stainless Steel 304	<b>00 10 20 60 20</b>
	Stainless Steel 316	<b>00 10 20 60 20 A4</b>

ACCESSORIES

# HANDRAIL BRACKETS

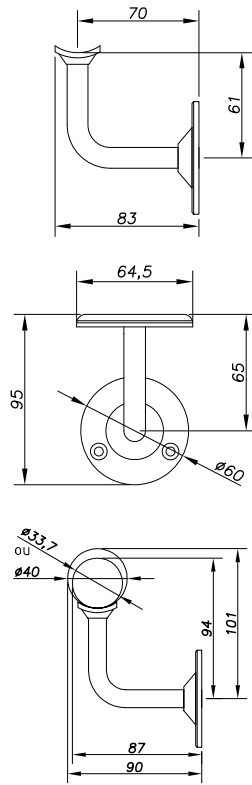
Handrails and railing accessories come to finalize your installations (stairs, banisters, etc.).

Different pipe diameters are offered in order to find a solution for each project.

## FIXED HANDRAIL BRACKET



**Size**



**Material**

Stainless Steel 304

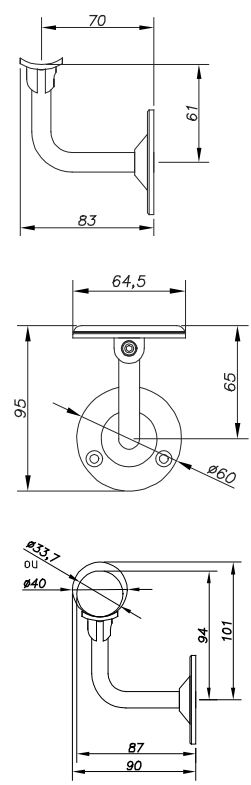
**Reference**

00 10 10 00

## ADJUSTABLE HANDRAIL BRACKET



**Size**



**Material**

Stainless Steel 304

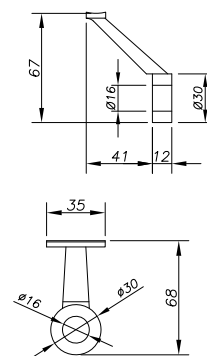
**Reference**

00 10 15 00

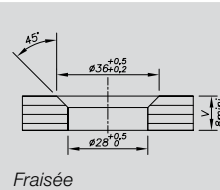
## HAND RAIL BRACKET ON GLASS



**Size**



**Drilling Plan**

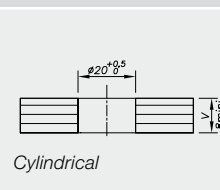


**Glass thickness**

10 > 10,5 mm  
16 > 19,5 mm  
20 > 22 mm

**Reference**

00 10 20 06 11 16  
00 10 20 06 11 20  
00 10 20 06 11 24



10 > 10,5 mm  
16 > 19,5 mm  
20 > 22 mm

00 10 20 06 24 24  
00 10 20 06 24 32  
00 10 20 06 24 36

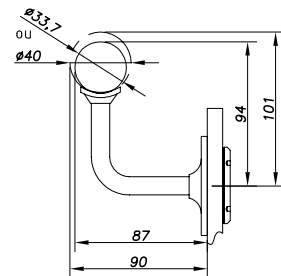
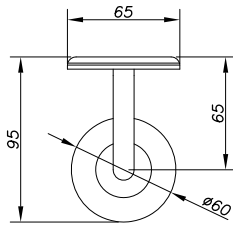
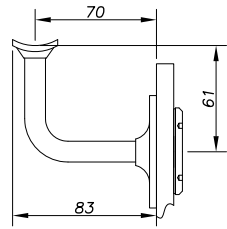
Other glass thickness upon request.



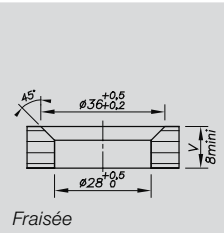
**HAND RAIL BRACKET ON GLASS**



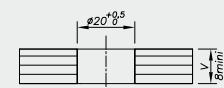
**Size**



**Drilling Plan**



Fraisée



Cylindrical

**Glass thickness**

**Reference**

Fraisée	11,5 > 13,5 mm	00 10 10 06 11 10 04
	14 > 15,5 mm	00 10 10 06 11 10 06
	16 > 17,5 mm	00 10 10 06 11 10
	18 > 19,5 mm	00 10 10 06 11 12
	20 mm	00 10 10 06 11 14
Cylindrical	10 > 12 mm	00 10 10 06 24 12
	13 > 15,5 mm	00 10 10 06 24 14
	16 > 17,5 mm	00 10 10 06 24 20
	18 > 19,5 mm	00 10 10 06 24 22
	20 mm	00 10 10 06 24 24

Other glass thickness upon request.

# FIXED HANDRAILS Ø 33 mm

## STAINLESS STEEL PIPE Ø 33 mm



**Standard length**

**Reference**

2 000 mm	00 10 30 33 200
4 000 mm	00 10 30 33 400
6 000 mm	00 10 30 33 600
Sur-mesure	00 10 30 33 xxx

## PIPE CAP STAINLESS STEEL Ø 33 mm



**Material**

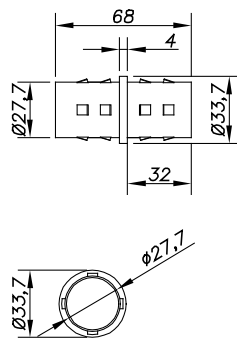
**Reference**

Stainless Steel 304	00 10 30 33 10
---------------------	----------------

## PIPE CONNECTOR Ø 33 mm



**Size**



**Material**

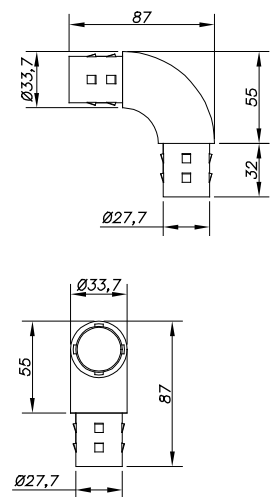
**Reference**

Stainless Steel 304	00 10 30 33 20
---------------------	----------------

## PIPE CAP STAINLESS STEEL Ø 33 mm



**Size**



**Material**

**Reference**

Stainless Steel 304	00 10 30 33 29
---------------------	----------------

ACCESSORIES  
FIXED HANDRAILS Ø 40 mm



# FIXED HANDRAILS Ø 40 mm

## STAINLESS STEEL PIPE Ø 40 mm



**Standard length**

**Reference**

2 000 mm	00 10 30 40 200
4 000 mm	00 10 30 40 400
6 000 mm	00 10 30 40 600
Sur-mesure	00 10 30 40 600

## PIPE CAP STAINLESS STEEL Ø 40 mm



**Material**

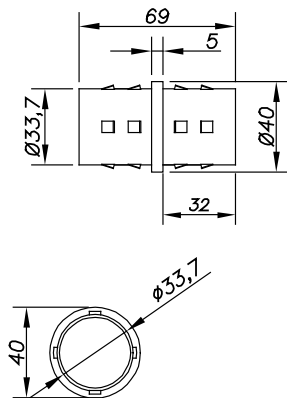
**Reference**

Stainless Steel 304	00 10 30 40 10
---------------------	----------------

## PIPE CONNECTOR Ø 40 mm



**Size**



**Material**

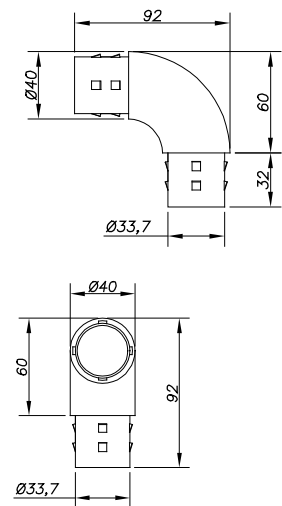
**Reference**

Stainless Steel 304	00 10 30 40 20
---------------------	----------------

## PIPE CAP STAINLESS STEEL Ø 40 mm



**Size**



**Material**

**Reference**

Stainless Steel 304	00 10 30 40 29
---------------------	----------------

ACCESSORIES  
FIXED HANDRAILS Ø 40 mm



---

# SADEV®

ARCHITECTURAL GLASS SYSTEMS

76 chemin des poses  
74330 POISY - FRANCE

Tel.: +33 (0)4 50 08 39 00

Fax: +33 (0)4 50 08 39 49

[info@sadev.com](mailto:info@sadev.com)

[www.sadev.com](http://www.sadev.com)

**SADEV®**  
ARCHITECTURAL GLASS SYSTEMS

**SADEV®**  
ARCHITECTURAL GLASS SYSTEMS

**SADEV®**  
ARCHITECTURAL GLASS SYSTEMS